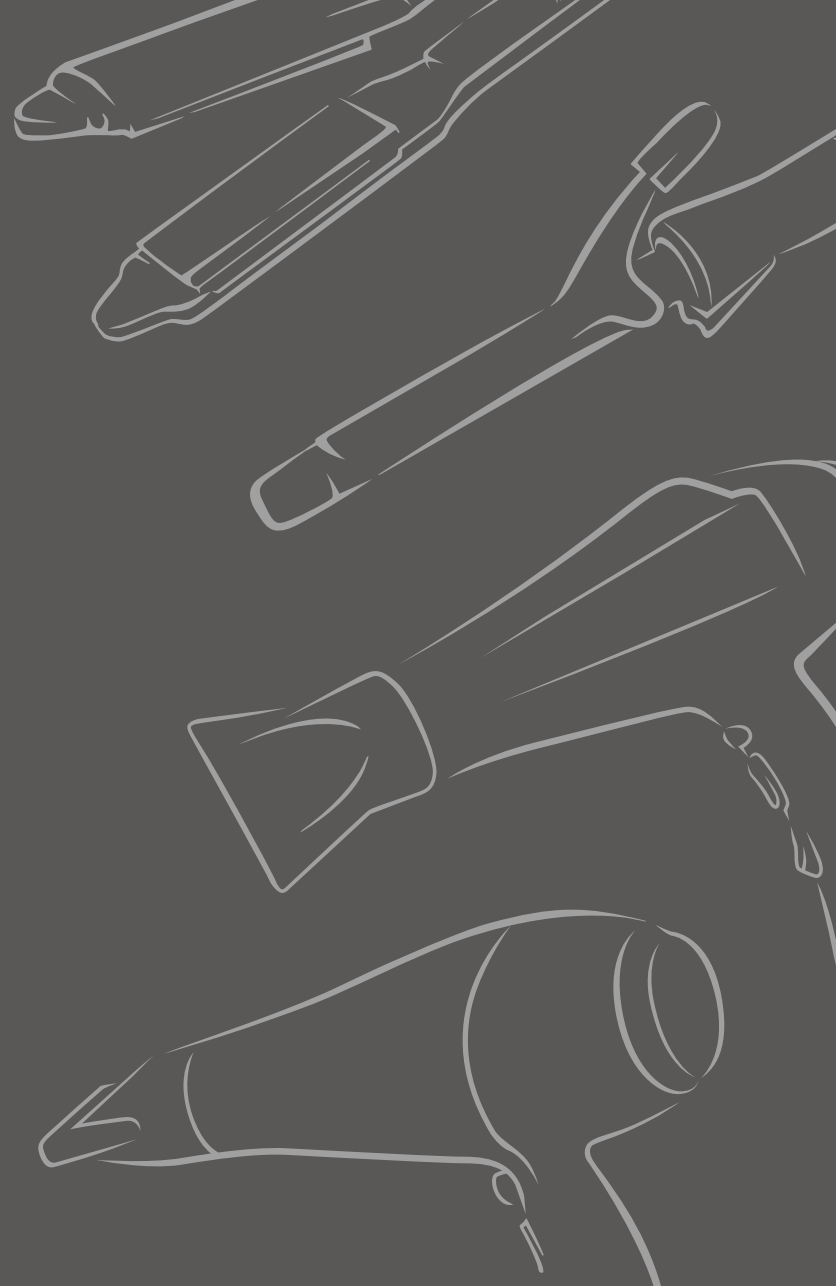




China Watts
Professional cares





Professional cares

Professional Salon Hair Dryer

China Watts

Company Profile

HUANGSHAN WATTS ELECTRICAL CO., LTD is a main leader in producing personal hair care products, which is located in Huangshan City. We have over 15 years experiences specialized in personal care appliances which qualified for CE/GS/CB/cETLus/TUV/SASO/LVD/EMC approvals; And WATTS is certificated with the international ISO 9001:2015 quality assurance standard and BSCI approval. All of our products are being sold well for worldwide markets for our good quality, competitive price and prompt delivery, especially for our after-sell service.

Our main products including: Professional Hair Dryer, Hair Straightener, and Hair Curling Tong, Please select the item you are in need. Any OEM/ODM orders are welcomed.

Hope the multi-beneficial business relationship will be established in nearly future.



G.Manager
Shelley Meng

Huangshan Watts Electrical Co., Ltd.

Add: Dengta, Qimen, Huangshan, Anhui, China
Tel: +86-0559-4503902 **Fax:** +86-0559-4503869
Skype: shelley5213 **Mobile:** +86-13955979990 18955957001
WeChat / WhatsApp: +86 18955957001
E-mail: shelley@wattshw.com
Http: /www.wattshw.com



Professional Salon Hair Dryer

HD-20

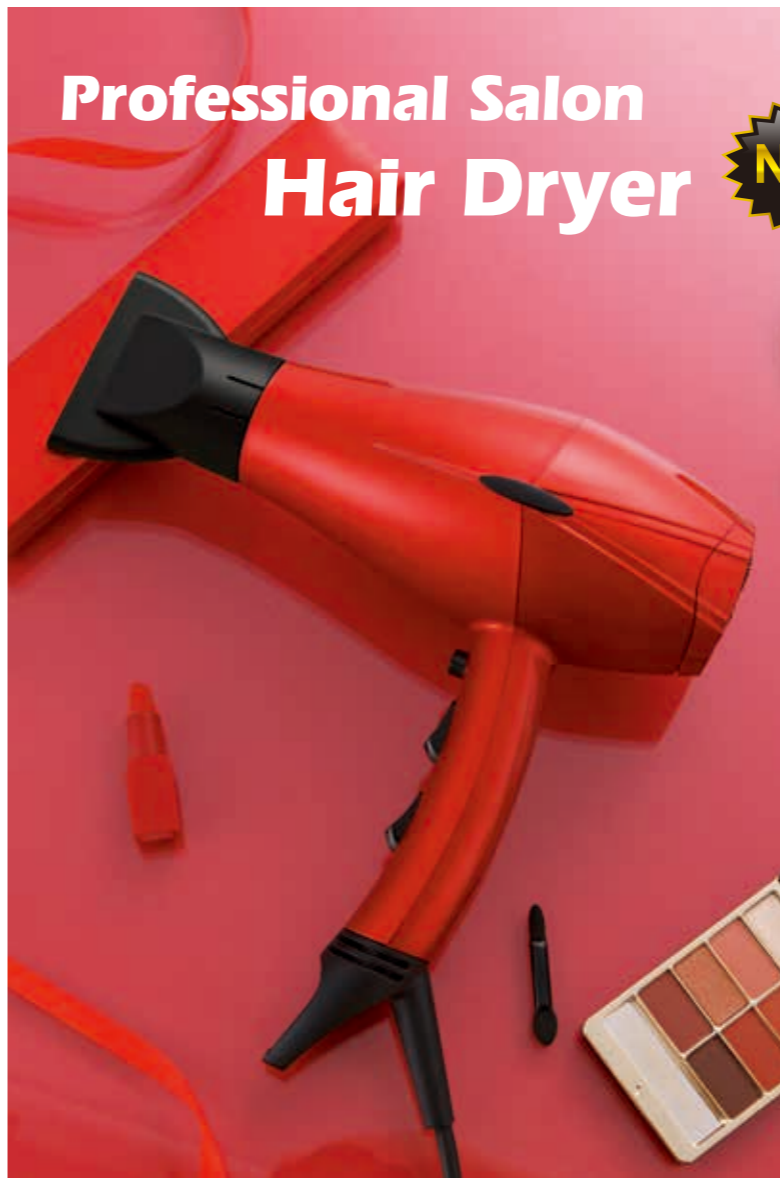
Professional AC or DC **2000-2400W** hair dryer
 Tourmaline Ionic, Ceramic Radiation
 and Keratin Are Available
 Professional concentrator with
 2 different styles and diffuser available
 3 Heat/2 speed settings
 Cool shot
 Removable filter
 Hanging loop
 Salon cable
 Light weight: 532g for AC
 Air speed: 15m/s

Packing: 6PCS/CTN
 G.W./N.W.: 7.0/6.5KGS
 Box meas: 24x9x26.5cm
 CTN meas: 49.5x28.5x28cm
 4104PCS/20'
 8658PCS/40'
 10176PCS/40HQ

Patent No.: ZL200830294527.5



Professional Salon Hair Dryer



HD-106 *Magnetically filter*

Professional A.C hair dryer
 220-240V, 50/60Hz, 2000-2200W
 Tourmaline Ionic, Ceramic Radiation
 and Keratin Are Available
 Professional concentrator with
 2 different styles and diffuser available
 3 Heat / 2 speed settings
 Cool shot
 Removable filter
 Hanging loop
 Salon cable
 Air speed: 17m/s

Patent No.: ZL201830544356.0



Light weight: 532g
 Packing: 8PCS/CTN
 G.W./N.W.: 9.35/8.35KGS
 Box meas: 23.8x9.5x28.5cm
 CTN meas: 49x29.5x30.5cm
 3816PCS/20'
 7632PCS/40'

Professional Salon Hair Dryer

NEW



HD-108 *Magnetically filter*

Professional AC. or DC 2000-2200W hair dryer
 Tourmaline Ionic, Ceramic Radiation
 and Keratin Are Available
 Professional concentrator with
 2 different styles and diffuser available
 3 Heat/2 speed settings
 Cool shot
 Removable filter
 Hanging loop
 Salon cable
 Weight: 540g for AC, 427g for DC
 Air speed: 17m/s

Packing: 8PCS/CTN
 G.W./N.W.: 9.35/8.35KGS
 Box meas: 23.8x9.5x28.5cm
 CTN meas: 49x29.5x30.5cm
 3816PCS/20'
 7632PCS/40'

Patent No.: ZL201830544349.0



Hair care



Professional AC motor



Drying rate



Ionic function



Professional Salon Hair Dryer

HD-54 *2000-2400W*

Professional AC. or DC. 2000-2400W hair dryer
 Tourmaline Ionic, Ceramic Radiation
 and Keratin Are Available
 Professional concentrator with
 2 different styles and diffuser available
 3 Heat/2 speed settings
 Cool shot
 Removable filter
 Hanging loop
 Salon cable
 Air speed: 18m/s

Packing: 8PCS/CTN
 G.W./N.W.: 9.35/8.35KGS
 Box meas: 23.8x9.5x28.5cm
 CTN meas: 49x29.5x30.5cm
 3816PCS/20'
 7632PCS/40'



Hair care



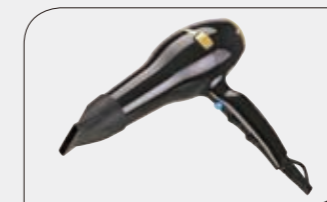
Professional AC motor



Drying rate



Ionic function



Professional Salon Hair Dryer

HD-21

Professional A.C or DC 2000W hair dryer
 Tourmaline Ionic,Ceramic Radiation
 and Keratin Are Available
 Professional concentrator
 and diffuser available
 3 Heat/2 speed settings
 Cool shot
 Removable filter
 Hanging loop
 Salon cable
 Air speed: 16.1m/s

Packing:12PCS/CTN
 G.W./N.W.:12.8/11.5KGS
 Box meas: 24x9x26.5cm
 CTN meas: 49.5x29.5x55.5cm
 4152PCS/20'
 8304PCS/40'
 9924PCS/40HQ

Patent No.: ZL200830294526.0



-  Hair care
-  Professional AC motor
-  Drying rate
-  Ionic function
-  417g with DC
563g with AC
- 





Professional Salon Hair Dryer

HD-101

Professional A.C 2000W hair dryer
 Tourmaline Ionic,Ceramic Radiation
 and Keratin Are Available
 Professional concentrator with
 2 different styles and diffuser available
 3 Heat/2 speed settings
 Cool shot
 Removable filter
 Hanging loop
 Salon cable
 Air speed: 17.8m/s

Packing :8PCS /CTN
 G.W./N.W.:9.35/8.35KGS
 Box meas:23.8X9.5X28.5cm
 CTN meas:49X29.5X30.5
 3816PCS/20'
 7632PCS/40'



-  Hair care
-  Professional AC motor
-  Drying rate
-  Ionic function

Professional Salon Hair Dryer

HD-104

Professional A.C 2000W hair dryer
 Tourmaline Ionic,Ceramic Radiation
 and Keratin Are Available
 Professional concentrator with
 2 different styles and diffuser available
 3 Heat/2 speed settings
 Cool shot
 Removable filter
 Hanging loop
 Salon cable
 Air speed: 17.3m/s

Packing :6PCS/CTN
 G.W./N.W.:7.0/6.5KGS
 Box meas:24x9x26.5cm
 CTN meas:49x28x28cm
 4368PCS/20'
 9054PCS/40'
 10620PCS/40HQ



Hair care



Professional AC motor



Drying rate



Ionic function



515g with AC

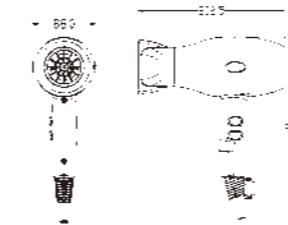
Professional Salon Hair Dryer

HD-103 *Magnetically filter*

2100W
 Professional AC or DC compact hair dryer
 3 heat & 2 speeds with cool shot
 Hanging hook
 Removable filter cover
 Slim concentrator
 Air speed: 17.4m/s

Packing :12PCS /CTN
 G.W./N.W.:12.7/11.7KGS
 Box meas:21.5X9X26cm
 CTN meas:44.5x28.5x53.5cm
 4956PCS/20'
 10260PCS/40'

Patent No.: ZL201830544357.5



Hair care



Professional AC motor



Drying rate



Ionic function



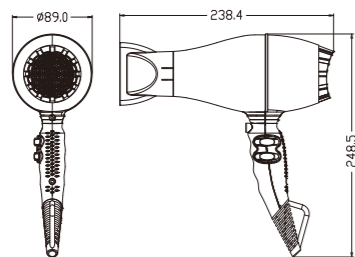
513g for AC
 440g for DC

Professional Salon Hair Dryer

HD-06D *Magnetically filter*

Voltage: 110-125V~/220-240V~
 Frequency: 50-60Hz
 Powerful: 21000W
 Air speed: 17m/s
 Decibel: 78DB
 Temperature: 120°C
 Light weight: 492g
 Compact size:

Packing :12PCS /CTN
 G.W./N.W.:12.7/11.7KGS
 Box meas:21.5X9X26cm
 CTN meas:44.5x28.5x53.5cm
 4956PCS/20'
 10260PCS/40'



- Hair care
- Professional AC motor
- Drying rate
- Ionic function

Professional Salon Hair Dryer

HD-105

Voltage: 110-125V~/220-240V~
 Frequency: 50-60Hz
 Powerful: 2000~2000W
 Air speed: 17m/s
 Decibel: 76DB
 Temperature: 120°C
 product weight: 565g
 With Infrared function

Packing: 6PCS/CTN
 G.W./N.W.: 7.0/6.5KGS
 Box meas: 24x9x26.5cm
 CTN meas: 49.5x28.5x28cm
 4104PCS/20'
 8658PCS/40'
 10176PCS/40HQ



- Hair care
- Professional AC motor
- Drying rate
- Ionic function

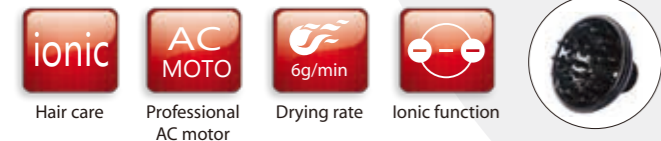
Professional Salon Hair Dryer

HD-30

Professional A.C 2000W hair dryer
 Tourmaline Ionic, Ceramic Radiation
 and Keratin Are Available
 Professional concentrator with
 2 different styles and diffuser available
 3 Heat/2 speed settings
 Cool shot
 Removable filter
 Hanging loop
 Salon cable
 Air speed: 17.8m/s

Packing: 8PCS/CTN
 G.W./N.W.: 9.7/8.7KGS
 Box means: 24x10x29cm
 CTN means: 49x41.5x30cm
 3544PCS/20'
 7472PCS/40'
 8784PCS/40'HQ

*The high critical temperature
 and extreme large volume.*

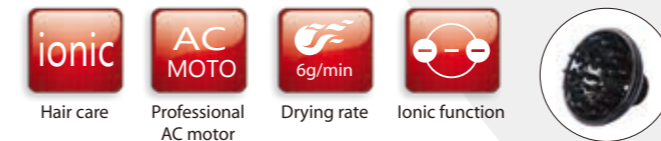


Professional Salon Hair Dryer

HD-31 2000-2400W

2000-2400W with AC motor
 AC or DC motor professional hair dryer
 tourmaline ionic, ceramic radiation
 and keratin are available
 3 heat/2 speed settings
 With cool shot button or without
 Hanging loop and non-slip pads
 in different style
 Salon cable
 Salon slim concentrator
 Removable filter cover
 Air speed: 17.9m/s

Packing: 6PCS/CTN
 G.W./N.W.: 6.5/6.0KGS
 Box means: 23.8x9.5x28.5cm
 CTN means: 49x29.5x30.5cm
 3816PCS/20'
 7632PCS/40'
 9120PCS/40'HQ



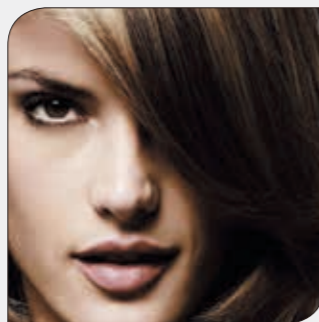
Professional Salon Hair Dryer

HT-8900

Professional A.C 2000W hair dryer
 Tourmaline Ionic, Ceramic Radiation
 and Keratin Are Available
 Professional concentrator with
 2 different styles and diffuser available
 3 Heat/2 speed settings
 Cool shot
 Removable filter
 Hanging loop
 Salon cable
 Air speed: 17.4m/s

Carton: 8pcs
 Box meas: 24x10x29cm
 CTN meas: 49x41.5x30cm
 3544PCS/20'
 7472PCS/40'
 8784PCS/40'HQ

*We are giving professionals a
 hair dryer a promise of power,
 performance and reliability.*



Hair care



Professional
AC motor

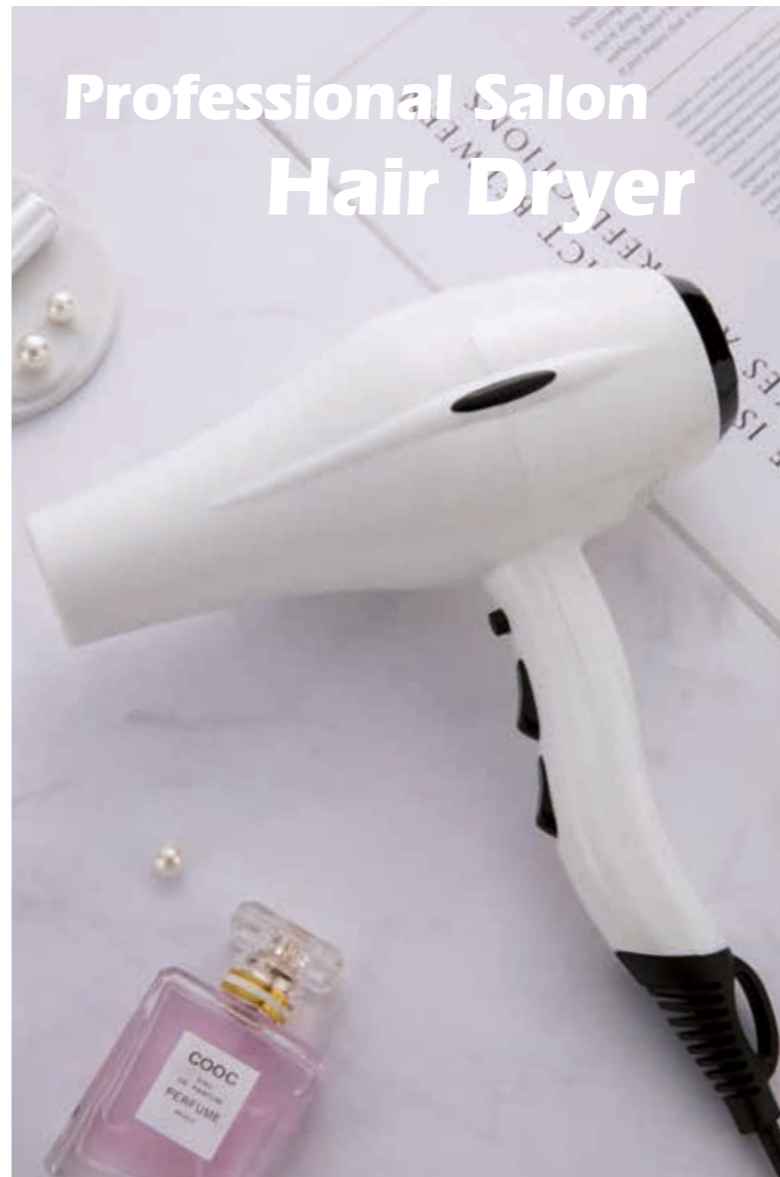


Drying rate



Ionic function

Professional Salon Hair Dryer



HD-39

1800-2000W
 AC or DC professional hair dryer
 3 heat/2 speed settings
 Hanging loop
 With cool shot button or without
 Different color for you choice
 Salon cable
 Salon slim concentrator
 Removable filter cover
 Air speed: 16.9m/s

Packing: 6PCS/CTN
 G.W./N.W.: 6.4/5.8KGS
 Box means: 22.5x9.5x26.5cm
 CTN means: 46.5x30x28cm
 4350PCS/20'
 8700PCS/40'
 10200PCS/40'HQ



Hair care



Professional
AC motor



Drying rate



Ionic function



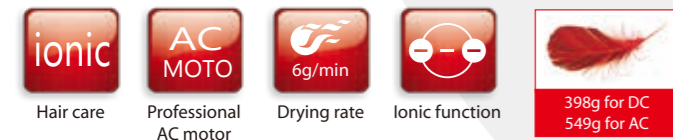
398g for DC
549g for AC

Professional Salon Hair Dryer

HD-32

1800W
 AC or DC professional hair dryer
 3 heat/2 speed settings
 Hanging loop
 With cool shot button or without
 Different color for you choice
 Salon cable
 Salon slim concentrator
 Removable filter cover
 Air speed: 17.2m/s

Packing: 8PCS/CTN
 G.W./N.W.: 9.35/8.35KGS
 Box meas: 22x9x26cm
 CTN meas: 45x37.5x27cm
 4744PCS/20'
 10008PCS/40'
 11768PCS/40'HQ



The classic straight line design reflects the artistic conception that we are striving for: concise but not simple.

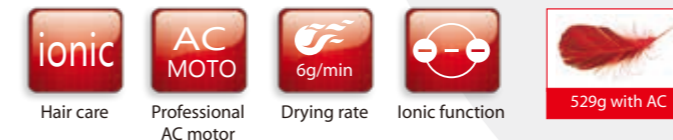


Professional Salon Hair Dryer

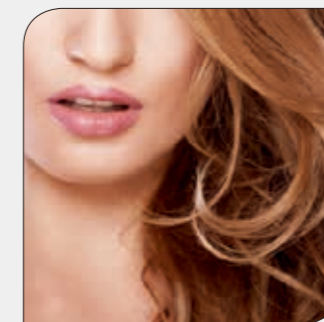
HD-78

Professional AC 1800-2000W hair dryer
 Tourmaline Ionic, Ceramic Radiation
 and Keratin Are Available
 Professional concentrator with
 2 different styles
 With diffuser available
 3 Heat/2 speed settings
 With cool shot or without
 Light weight
 Hanging loop
 Salon cable
 Air speed: 14.7m/s

Packing: 24PCS/CTN
 G.W./N.W.: 19.9/16.8KGS
 Box meas: 30.3x10x24cm
 CTN meas: 62x62x50cm
 3500PCS/20'
 7250PCS/40'



The perfect integration of classicality and modernism, tradition and future to offer the harmonious enjoy with the starry particle on the handle.



Professional Salon Hair Dryer

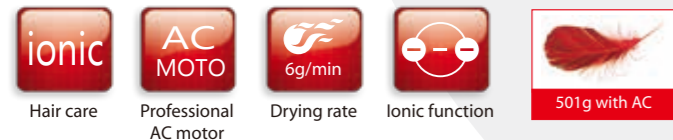
HD-29

Professional A.C Motor 2000W
 Tourmaline Ionic, Ceramic Radiation
 and Keratin Are Available
 With two different styles concentrators
 3 heating and 2 speed settings
 Compact size, so that carry
 Air speed: 16.3m/s

Packing: 12PCS/CTN
 G.W./N.W.: 12./11KGS
 Box meas: 19.5x8.3x26.5cm
 CTN meas: 51.5x40x28 cm
 5820PCS/20'
 12072PCS/40'
 14148PCS/40HQ



COMPACT

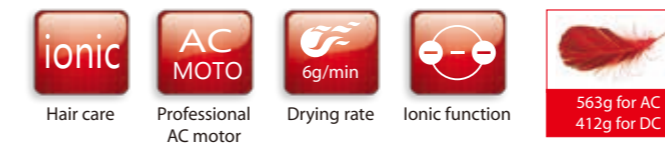


Professional Salon Hair Dryer

HD-40

AC or DC professional hair dryer
 tourmaline Ionic, ceramic radiation
 and keratin are available
 3 heat/2 speed settings
 With cool shot button or without
 Hanging loop and non-slip pads in different style
 Salon cable
 Salon slim concentrator
 Removable filter cover
 Air speed: 17.2m/s

Packing: 8PCS/CTN
 G.W./N.W.: 8.9/7.9KGS
 Box means: 23.8x9.5x28.5cm
 CTN means: 49x29.5x40cm
 3728PCS/20'
 7888PCS/40'
 9272PCS/40'HQ

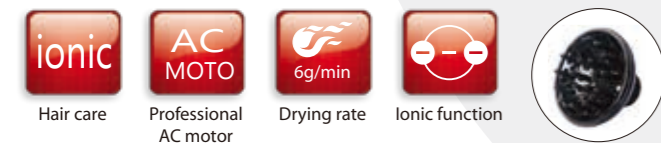


Professional Salon Hair Dryer

HD-06B

Professional AC 2000-2200W hair dryer
 Tourmaline Ionic, Ceramic Radiation
 and Keratin Are Available
 A.C. Long life motor
 3 Heat/2 speed settings
 Freeze shot button
 Salon slim concentrator and diffuser available
 Hanging loop and non-slip pads
 Salon cable
 Air speed: 16.5m/s

Packing: 6PCS/CTN
 G.W./N.W.: 8/7KGS
 Box meas: 23.8x9.5x28cm
 CTN meas: 49x30x29.5cm
 3876PCS/20'
 8028PCS/40'
 9270PCS/40HQ



Professional Salon Hair Dryer

HD-28

Tourmaline Ionic, Ceramic Radiation
 and Keratin Are Available
 The cover with a magnet way to lock
 With diffuser and two different
 styles concentrator
 AC motor 2200W
 DC Motor 1800-2000W
 3 heating and speed settings.
 Progressive moulding
 Air speed: 16.7m/s

Packing: 8PCS/CTN
 G.W./N.W.: 9.5/8.5KGS
 Box meas: 23x9.8x27cm
 CTN meas: 41x47x28.5cm
 4072PCS/20'
 8448PCS/40'
 9904PCS/40HQ



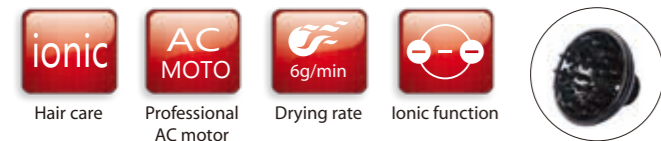
Professional Salon Hair Dryer

HD-22

Professional Hair dryer AC Motor 2000W
 Tourmaline Ionic, Ceramic Radiation
 and Keratin Are Available
 3 heats/2 speeds
 With cool shot
 Concentrator of 2pcs type for your choice
 High speed and low noise
 Air speed: 17.6m/s

Packing: 8PCS/CTN
 G.W./N.W.: 9.3/8.3KGS
 Box meas: 21x9.5x27.5cm
 CTN meas: 43x39.5x29cm
 4544PCS/20'
 9416PCS/40'
 11040PCS/40HQ

Patent No.: ZL200830294525.6

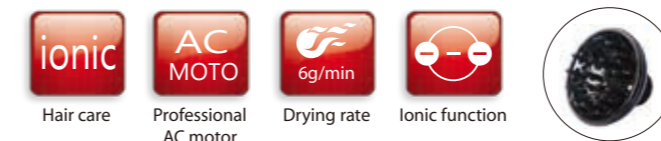


Professional Salon Hair Dryer

HD-5815

AC 2000W, DC 1800W
 Hair dryer with AC/DC motor
 3 heat & 2 speeds with cool shot
 Hanging hook Removable filter cover
 Air speed: 17.6m/s

Packing: 8PCS/CTN
 G.W./N.W.: 9.3/8.3KGS
 Box meas: 21x9.5x27.5cm
 CTN meas: 43x39.5x29cm
 4544PCS/20'
 9416PCS/40'
 11040PCS/40HQ

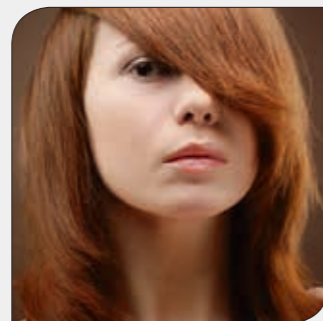


Professional Salon Hair Dryer

8902

Professional A.C 2000W hair dryer
 Tourmaline Ionic, Ceramic Radiation
 and Keratin Are Available
 Professional concentrator with
 2 different styles and diffuser available
 3 Heat/2 speed settings
 Cool shot
 Removable filter
 Hanging loop
 Salon cable
 Air speed: 17.4m/s

Carton: 8pcs
 Box meas: 24x10x29cm
 CTN meas: 49x41.5x30cm
 3544PCS/20'
 7472PCS/40'
 8784PCS/40HQ



Hair care



Professional AC motor



Drying rate



Ionic function



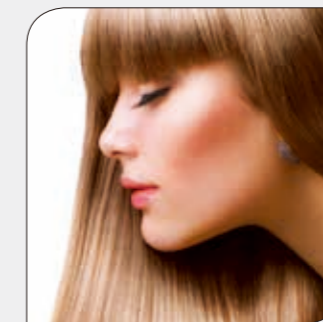
Professional Salon Hair Dryer

1703

Professional AC 2100-2400W hair dryer
 Tourmaline Ionic
 Ceramic Radiation and Keratin Are Available
 Professional concentrator and diffuser available
 3 Heat / 2 speed settings with Cool shot
 Removable filter Hanging loop Salon cable

Carton: 8pcs
 Box meas: 24x9x26.5cm
 CTN meas: 49.5x28.5x28cm
 4104PCS/20'
 8658PCS/40'
 10176PCS/40HQ

We are giving professionals a hair dryer a promise of power, performance and reliability.



Hair care



Professional AC motor



Drying rate



Ionic function

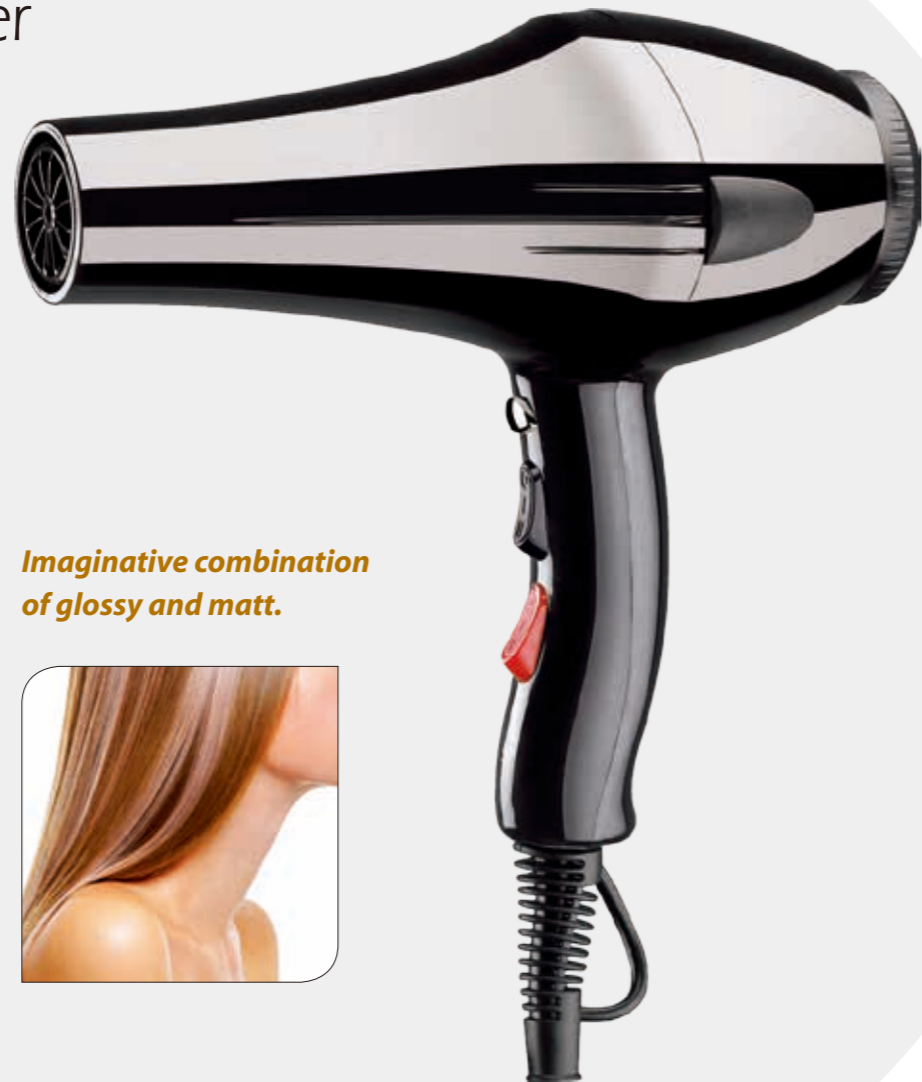


Professional Salon Hair Dryer

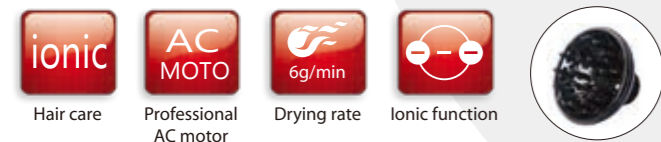
HT-5802

Professional A.C 2000W hair dryer
 Tourmaline Ionic, Ceramic Radiation
 and Keratin Are Available
 Professional concentrator with
 2 different styles and diffuser available
 3 Heat/2 speed settings
 Cool shot
 Removable filter
 Hanging loop
 Salon cable
 Air speed: 17.2m/s

Carton: 12pcs
 Box meas: 24x9x26.5cm
 CTN meas: 49.5x29.5x55.5cm
 4152PCS/20'
 8304PCS/40'
 9924PCS/40HQ



*Imaginative combination
 of glossy and matt.*



Professional Salon Hair Dryer

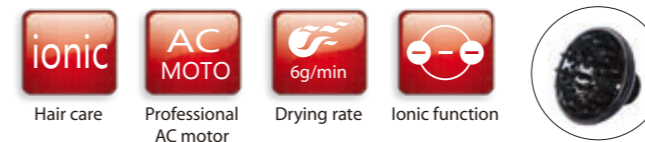
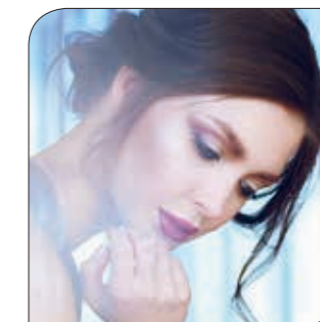
1601

Professional AC 1800-2100W hair dryer
 Tourmaline Ionic
 Ceramic Radiation and Keratin Are Available
 Professional concentrator and diffuser available
 3 Heat/2 speed settings with Cool shot
 Removable filter Hanging loop Salon cable

Carton: 8pcs
 Box meas: 23.5x9.4x24.7cm
 CTN meas: 49.5x28.5x28cm
 4104PCS/20'
 8658PCS/40'
 10176PCS/40HQ



*Subtle details and styling
 bring this classic to a new
 level of performance.*



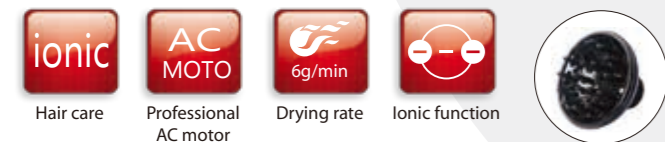
Professional Salon Hair Dryer

1602

Professional AC 1800-2100W hair dryer
 Tourmaline Ionic
 Ceramic Radiation and Keratin Are Available
 Professional concentrator and diffuser available
 3 Heat/2 speed settings with Cool shot
 Removable filter Hanging loop Salon cable

Carton: 8pcs
 Box meas: 23.5x9.4x24.7cm
 CTN meas: 49.5x28.5x28cm
 4104PCS/20'
 8658PCS/40'
 10176PCS/40HQ

The slender structure displays its own graceful curve.



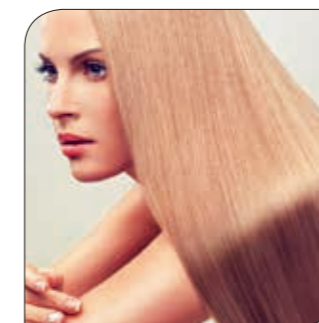
Professional Salon Hair Dryer

1605

Professional AC 1800-2100W hair dryer
 Tourmaline Ionic
 Ceramic Radiation and Keratin Are Available
 Professional concentrator and diffuser available
 3 Heat/2 speed settings with Cool shot
 Removable filter Hanging loop Salon cable

Carton: 8pcs
 Box meas: 23.5x9.4x24.7cm
 CTN meas: 49.5x28.5x28cm
 4104PCS/20'
 8658PCS/40'
 10176PCS/40HQ

Endurance, performance and silence are some of the main qualities of this hair dryer noted for its sobriety. An example of tradition with a very good performance level.



Hotel hair dryer bracket



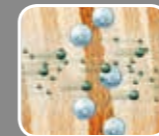
Professional Salon Hair Dryer



Professional ceramic ionic



Tourmaline Technology



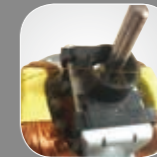
Ceramic Ion Technology



360° swivel power cord is available for all of the hair dryers



Without the protection, the hair is easily be winded in the motor axes



The protection- plastic component is installed, it can keep the hair away from the motor



The plastic component

Household Hair Dryer

HD-26

Tourmaline Ionic,Ceramic Radiation
and Keratin Are Available
Professional D.C 2000W hair dryer
Cool shot function
3heats/2speeds
Clip on rear cap
Removable mesh cover
Slim concentrator nozzle

Packing:6PCS/CTN
G.W./N.W.:6.7/6.2KGS
Box meas:24.5x10x28.5cm
CTN meas:50.5x31.5x30.5cm
3462PCS/20'
7170PCS/40'
8286PCS/40'HQ

Patent No.: ZL201330390371.1



Household Hair Dryer

HD-13

Tourmaline Ionic,Ceramic Radiation
and Keratin Are Available
Professional D.C 2000W hair dryer
Cool shot function
3heats/2speeds
Clip on rear cap
Removable mesh cover
Slim concentrator nozzle
With diffuser

Packing:8PCS/CTN
G.W./N.W.:8.2/7.2KGS
Box meas:22.8x10x27cm
CTN meas:47x41.5x28.5cm
4032PCS/20'
8344PCS/40'
9640PCS/40HQ

Patent No.: ZL200730182077.6

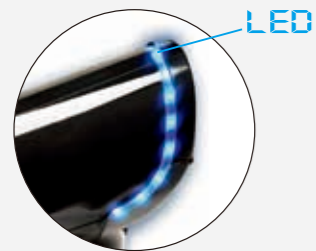


Household Hair Dryer

HD-16

Tourmaline Ionic,Ceramic Radiation and Keratin Are Available
DC. Motor 1800-2000W
3 heats/2 speeds setting
With Freeze shot button
LED light is available

Packing: 12PCS/CTN
G.W./N.W.: 10.7/9.7KGS
Box meas: 21x9x28cm
CTN meas: 43.5x29.5x55.5cm
4716PCS/20'
9780PCS/40'
11292PCS/40HQ



Household Hair Dryer

HD-107

Tourmaline Ionic,Ceramic Radiation and Keratin Are Available
Professional D.C 2000W hair dryer
Cool shot function
3heats/2speeds
Clip on rear cap
Removable mesh cover
Slim concentrator nozzle
With diffuser

Packing:8PCS/CTN
G.W./N.W.:8.2/7.2KGS
Box meas:22.8x10x27cm
CTN meas:47x41.5x28.5cm
4032PCS/20'
8344PCS/40'
9640PCS/40HQ



PROMOTION



Travel Hair Dryer

RCY-6005

1200W
DC Travel Hair Dryer
OFF-COOL-LOW-HIGH
settings
Foldable handle
With concentrator

Packing :24PCS /CTN
G.W./N.W.:10.94/10.14KGS
Box meas:13.2X8.2X20.3cm
CTN meas:51X23.5X42.5cm
12960PCS/20'
25920PCS/40'



Travel Hair Dryer

HD-528

1200W
DC Travel Hair Dryer
2 heat & speed
Foldable handle
With concentrator

Packing :24PCS /CTN
G.W./N.W.:10.45/9.65KGS
Box meas:13.2X8.2X20.3cm
CTN meas:51X23.5X42.5cm
12960PCS/20'
25920PCS/40'



Travel Hair Dryer

RCY-8617A

1000W
DC Travel Hair Dryer
2 heat & speed
Foldable handle
With concentrator

Packing :24PCS /CTN
G.W./N.W.:9.65/8.83KGS
Box meas:12x8x19cm
CTN meas:50X25X40cm
12960PCS/20'
25920PCS/40'



Travel Hair Dryer

HD-810

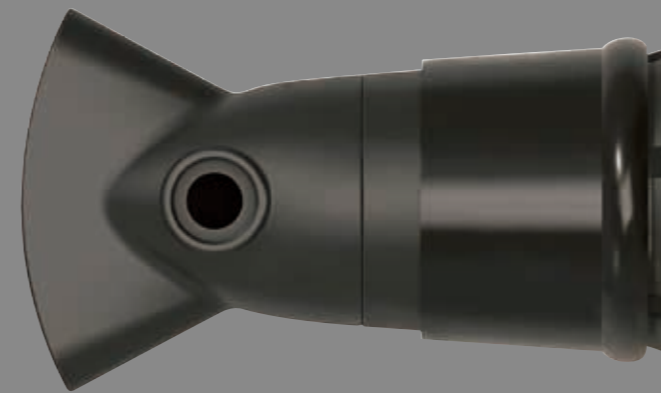
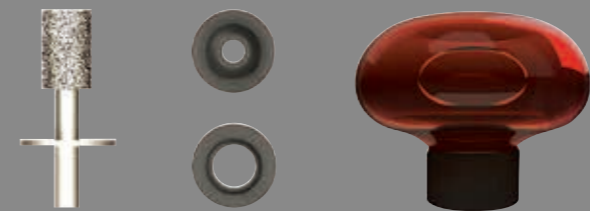
1000W
Mini DC Travel Hair Dryer
2 heat & speed
Foldable handle
With concentrator

Packing :24PCS /CTN
G.W./N.W.:9.65/8.83KGS
Box meas:12x8x19cm
CTN meas:50X25X40cm
12960PCS/20'
25920PCS/40'





China Watts



Description:

Standard and universal mounts that turn any major brand dryer into a treatment dryer. Delivers Heat Activated Treatment serum to penetrate hair while drying.

Results

Fast and damage-free drying
New treatment revenues
Soft, shiny, conditioned, frizz-free and manageable hair
Long lasting volume on fine hair textures



Kit Includes:

Patented Universal Treatment Nozzle
Two (2) micro-sphere atomizers
Two (2) refillable reservoirs
Heat Activated Argan Serum (100 ml)
Heat Activated Volumizing Serum (100 ml)

Features & Benefits

The Heat Activated Treatment serum is distributed through a patented micro-sphere atomizer
The atomizer is activated with the air flow of the blow dryer
And the serum is infused into the hair shaft
Infuses nutrients while drying hair
Unique and effective form of treatment delivery
Fast and easy application
Argan and Volumizing Serums for all hair types.
Easy to fill 15ml bottles
Color coded packaging for Heat Activated Serums.
Limited Lifetime Warranty

Professional Hair Straightener

YX-118 2-IN-1

Universal Voltage, 110V-240V, 50-60Hz
 Single Size 295*34*38mm
 With steam function for both hair straightening and hair keratin
 Temperature:140°C ~230°C PTC/MCH
 LCD display for easy operation
 Cord 360 degree swivel cord prevents tangling and keeps you on the move
 Auto shut off without using in 60 minutes
 Heating plate size: 100X28mm
 3D floating
 MCH/PTC heating element
 Power: 50W
 Temperature: 140-160-180-200-230°C

Packing:20PSC/CTN
 G.W./N.W.:12/11.2KGS
 Box meas:7X11X36cm
 CTN meas:36x45x38cm
 14928PCS/20"
 30928PCS/40"

Patent No.: ZL201930265377.3



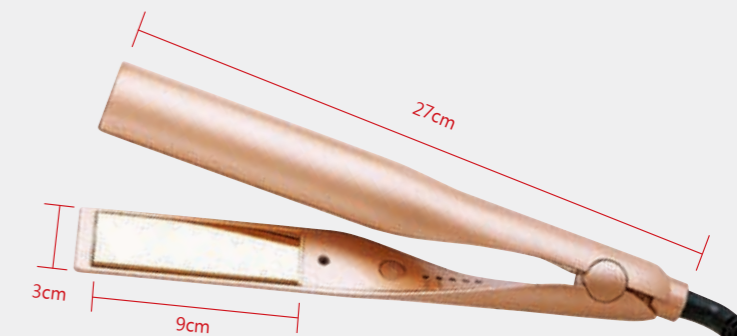
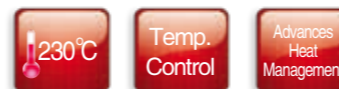
Professional Hair Straightener

YX-105

Power: 45W
 Voltage:110-125V~/220-240V~
 Frequency:50-60Hz
 Temperature:230°C
 One-touch switch machine, circum-circulation temperature adjustment
 High-end Blu-ray indicator.
 Gold titanium vacuum plating heating plate.
 Fast PTC heating.
 60 minutes automatic shutdown function.
 2.5m 360 °C. Rotating PVC rope with rings with different national power plugs
 Certification: CE/EMC/FCC/ROSH
 Temperature: 140-160-180-200-230°C

Packing:20PSC/CTN
 G.W./N.W.:10.4/9.7KGS
 Box meas:7X11X35cm
 CTN meas:36x45x36cm
 14928PCS/20"
 30928PCS/40"

Patent No.: ZL201830746429.4



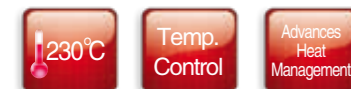
Professional Hair Straightener

YX-110

Professional Hair Straightener Set
 LCD display to show temperature
 Straighten-Curl-flip-style
 Dual voltage and Auto-shut-off can be set
 Nano silver titanium or ceramic tourmaline plate via korea make
 Adjustable Temperature: 80-230°C or (180-450°F), Max to 240°C / 465°F
 MCH heating element
 2.5 meters, 360° swivel power cord
 Heating plate size: 95X26mm
 3D floating
 MCH/PTC heating element

Packing: 20PSC/CTN
 G.W./N.W.: 10.8/10.2KGS
 Box meas: 7X11X35cm
 CTN meas: 36x45x36cm
 14928PCS/20"
 30928PCS/40"

Patent No.: ZL201930513102.7



Professional Hair Straightener

YX-112

1 1/4

Professional Hair Straightener Set
 LCD display to show temperature
 Straighten-Curl-flip-style
 Dual voltage and Auto-shut-off can be set
 Nano silver titanium or ceramic tourmaline plate via korea make
 Adjustable Temperature: 80-230°C or (180-450°F), Max to 240°C / 465°F
 MCH heating element
 2.5 meters, 360° swivel power cord
 Heating plate size: 95X26mm
 3D floating
 MCH/PTC heating element

Packing: 20PSC/CTN
 G.W./N.W.: 10.8/10.2KGS
 Box meas: 7X11X35cm
 CTN meas: 36x45x36cm
 14928PCS/20"
 30928PCS/40"



Professional Hair Straightener

YX-120

Product dimensions : L260mmXW31mmXH35mm
 Net weight: 325g (including power cord)
 100-240V 50/60HZ
 Automatic shutdown function : 1 hour automatic shutdown
 (calculated from product startup)
 Products in addition to pull dry hair, but also pull wet hair
 (no water is appropriate), and will not appear out of control
 temperature too high phenomenon. Enhance function and
 avoid injury to human body.

Packing:20PSC/CTN
 G.W./N.W.:10.4/9.6KGS
 Box meas:7X11X35cm
 CTN meas:36x45x36cm
 14928PCS/20"
 30928PCS/40"

Patent No.: ZL201930051876.2



Professional Hair Straightener

YX-108 Rechargeable Portable Straightener

Power: 25W
 Charging voltage: 5V Operating voltage: 3.7V
 Temperature: 160-180-200 degrees Graphene heating
 Best modeling time: 180-200S
 Battery capacity: 4000mA
 Charging time: 2A charging 2.5-3H
 Actual pull time: about 38 minutes
 Housing material: PET engineering material
 USB charging cable power cord: 1 meter
 Heating plate size: 70X18mm 3D floating
 You can give 5V--1A charging power to your mobile phone
 Certification: CE/EMC/FCC/ROSH
 Temperature: 160-180-200 heating of graphene
 Best molding time: 180-200s battery
 Capacity: 4000mA

Packing:20PSC/CTN
 G.W./N.W.:8.2/7.6KGS
 Box meas:6X9X26cm
 CTN meas:32x20x53cm
 14928PCS/20"
 30928PCS/40"



Patent No.: ZL201830609444.4



Professional Hair Straightener

YX-109 Mini USB portable straightener

Stand-alone net weight: 75g set weight: 185g
 Packing size: 180X50X40mm
 Certification: CE/EMC/FCC/ROSH
 Power: 12W±10%
 Heating plate size :13x60mm
 voltage :5 v /1.5-2 A
 Heating element :PI heating film
 The highest temperature: 200 ± 10 °
 Heating speed: the highest temperature can reach 200 degrees in 3-4 minutes.
 Product size: 20x25x170mm

Packing:40PSC/CTN
 G.W./N.W.:7.8/7.2KGS
 Box meas:5X6X20cm
 CTN meas:26x25x41cm
 14928PCS/20"
 30928PCS/40"

Patent No.: ZL201930261290.9



Professional Hair Straightener

HW-219

Voltage:110-125V~/220-240V~
 Frequency:50-60Hz
 Temperature:210°CWith PTC heater
 360°swivel hook
 ON/OFF switch

Packing:30PCS/CTN
 G.W./N.W.:13.3/12.6KGS
 Box meas:30x7x4.8cm
 CTN meas:49.5x31.5x23cm
 23400PCS/20"
 46800PCS/40"



Professional Hair Straightener

HW-1101

Voltage:110-125V~/220-240V~
 Frequency:50-60Hz
 Temperature:200°C
 Professional hair straightener
 Ceramic plate or tourmaline coating plate
 Salon temperature with
 highest 200°C within 60-90s
 Indicator on /off switch
 PTC fast heat chip
 360° swivel cord
 Wet and dry function
 Auto shut-off

Packing:20PCS/CTN
 G.W./N.W.:8.98/8.18KGS
 Box meas:35x9x5 cm
 CTN meas:36x37.5x26.5 cm
 15640PCS/20'
 32420PCS/40'



HW-1101A



HW-1101B



HW-1101C-LCD

Professional Hair Straightener

HW-1106

Professional hair straightener
 Ceramic plate or tourmaline coating plate
 Salon temperature with
 highest 210°C within 60-90s
 Indicator on /off switch
 PTC fast heat chip
 360° swivel cord
 With lucid, blue and shiny strip light

Packing:20PCS/CTN
 G.W./N.W.:9.08/8.28KGS
 Box meas:35x9x5 cm
 CTN meas:36x37.5x26.5 cm
 15640PCS/20'
 32420PCS/40'

Patent No.:ZL201330390353.3

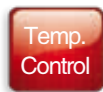


Professional Hair Straightener

HW-2403C

Voltage:110-125V~/220-240V~
Frequency:50-60Hz
Temperature:230°C
Ceramic plates or tourmaline coating plates
Heats up in 60 seconds
LED indicated light
On/Off switch
360° swivel power cord

Packing: 16PCS/CTN
G.W./N.W.:9.6/8.9KGS
Box meas: 8.7x6x31.5 cm
CTN meas: 32x25.5x36.8 cm
14928PCS /20'
30928PCS/40'



Professional cares



Professional Curling Iron

HC-2804

Temperature: 120-140-160-180-200-230°C

Power: 55W

Ceramic coating tong

Housing: PU high temperature paint

Power cord: 2.5 m

Heating plate size: 150X28mm

150X25mm/150X22mm

22mm, 25mm, 28mm are available for curling tong

PTC heating element

Infrared function

Certification: CE/EMC/FCC/ROSH

Packing: 20PSC/CTN

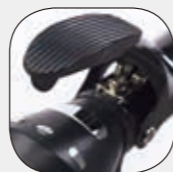
G.W./N.W.: 11/10.2KGS

Box meas: 7X11X36cm

CTN meas: 36x45x38cm

14928PCS/20"

30928PCS/40"



Professional Curling Iron

HC-1102A

Professional hair curler (new hot selling)

Ø19,22,25mm on curling tong

Chrome plated/ceramic coating available

PTC heater

Instant heat

Temperature: highest 200°C (+/-10degree)

360° swivel power cord

Packing: 20PCS/CTN

G.W./N.W.: 8.4/7.6KGS

Box meas: 37.5x9x5 cm

CTN meas: 38.5x37.5x26.5 cm

14640PCS/20"

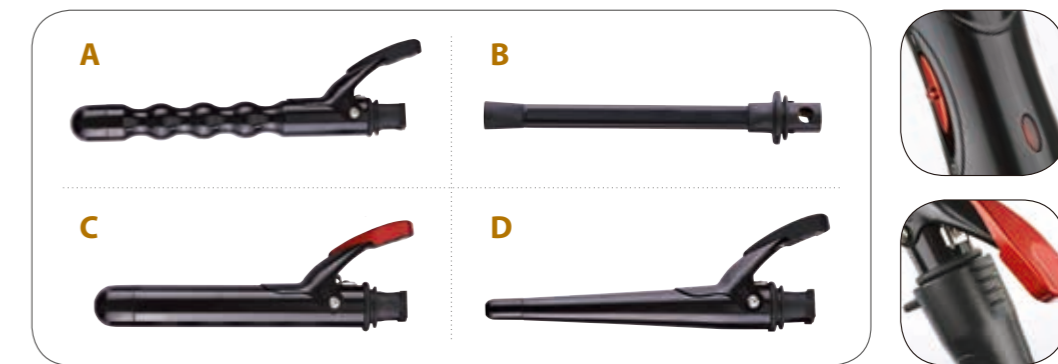
30320PCS/40"



With LCD display

With temperature controller

With on/off switch



Professional Curling Iron

HC-1102A-SW

Professional interchangeable hair iron
 (new hot selling)
 Ø19,22,25mm on curling tong
 Chrome plated/ceramic coating available
 Interchangeable iron with 5 different styles
 as attached photos
 On/off switch
 PTC heater
 Instant heat
 Temperature: highest 200°C (+/-20degree)
 360° Swivel power cord

Packing:12PCS/CTN
 G.W./N.W.:13.2/12.2KGS
 Box meas:13x5.5x36.2cm
 CTN meas:41.5x37.5x24.5
 8808PCS/20'
 17940PCS/40'

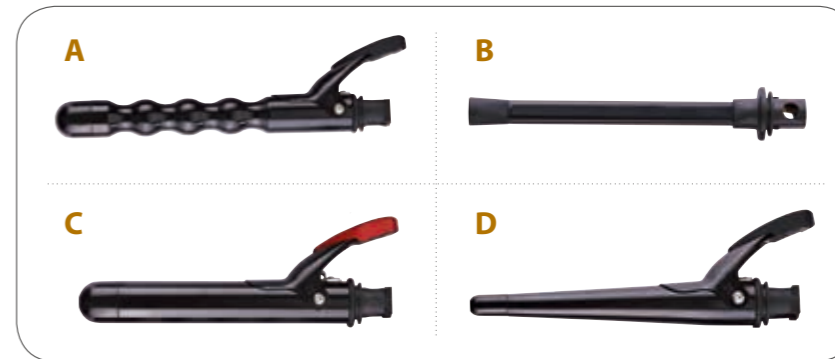


Professional Curling Iron

HC-2706

Ceramic hair tong
 PTC heater
 World-wide voltage
 110V~240V
 Indicator/on/off switch
 Ceramic coating barrel/black rubber handle
 Max temperature 150 degree(+/-10 degree)
 Normal 4 color gift box
 360° swivel cord

Packing:20PCS/CTN
 G.W./N.W.:9.0/8.0KGS
 Box meas:8.7x5x35 cm
 CTN meas:36.5x36x26.5cm
 10680PCS /20'
 33320PCS/40'



Professional Curling Iron

HC-2705

Cermic barrel for perfectly smooth curls
 Ceramic technology for ultra fast heat up
 With temperature controller
 LCD display
 Swivel cord
 Max temperature 200°
 Digital temperature display
 Auto shut-off
 Beep alarm

Packing: 20PCS/CTN
 G.W./N.W.: 8.2/7.2KGS
 Box meas: 8.5x5x33.7 cm
 CTN meas: 35.5x26x34.7 cm
 17480PCS /20'
 36220PCS/40'

Patent No.: ZL200730029604.X



Professional Curling Iron

HC-2802

With 360 degree swivel switch
 With swivel handle and lock handle function
 With LED Indicator light
 220-240V 50HZ 45W
 Max temperature 210degree
 Minimum temperature 140degree

Packing: 24PCS/CTN
 G.W./N.W.: 12.04/11.04KGS
 Box meas: 7.0x5.0x40.0 cm
 CTN meas: 41.5x31.5x30 cm
 17232PCS /20'
 35688PCS/40'

Patent No.: ZL200830294524.1

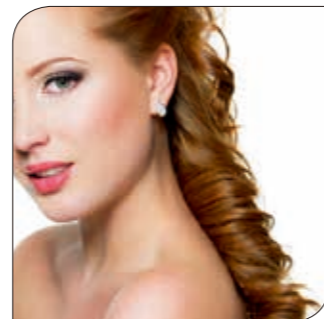
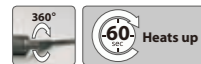


Professional Curling Iron

HC-2803

Easy curling iron
 PTC heater and fast heating
 Temperature setting: 80°C-200°C
 360 degree swivel power cord
 Five grades temperature of rotating digital switch
 Φ 6,8,10,12,14,16,19mm on curling tong

Packing: 20PCS/CTN
 G.W./N.W.: 11.50/10.50KGS
 Box meas: 37.5x5.5x5.0cm
 CTN meas: 38.5x28.5x26.5cm
 18560PCS/20'
 39200PCS/40'



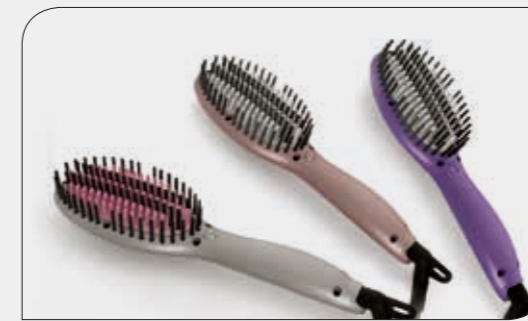
Hair Brush

YX-306 MINI

Power: 35W
 Professional quality, economical price
 Intelligent IC temperature control, accurate and safe
 LED indicator light, available for all hair types
 Brush design, to let the hair pass more smoothly, easy to use it.
 PTC heater, heat up fast
 2.0 meter 360° swivel tangle-free cord.
 Ergonomic design, soft touch and elegant lines
 Heating plate: nano ceramic oil
 Housing: PU high temperature paint
 Power cord: 2 m
 Heating plate size: ellipse
 Certification: CE/EMC/FCC/ROSH

Packing: 40PSC/CTN
 G.W./N.W.: 12.6/12KGS
 Box meas: 6X8X24cm
 CTN meas: 32x33x49cm
 14928PCS/20"
 30928PCS/40"

Patent No.: ZL201730179688.9





HUANGSHAN WATTS ELECTRICAL CO., LTD.

Factory add: Dengta, Qimen, Huangshan City, Anhui China

Tel: +86-559-4503902

Fax: +86-559-4503869

E-mail: shelley@wattshw.com

<http://www.wattshw.com>

