



Enterprise Introduction

Shanghai COOLYOUNG Machine Equipment Manufacture Co., Ltd. (referred to as COOLYOUNG packaging) is a high-tech enterprise capable of fully automatic packaging and consumables R&D, design, production, sales and service. Since its inception, COOLYOUNG packaging has been focusing on providing specialized, personalized and customized downstream packaging solutions for packing line.

The main products include 5 series, which are cartoning machine series (KY-120ZH adapt to various products packing requirements. KY-180ZH medium speed cartoning machine meets the needs of large output products, KY-300ZH meets the more larger output). Strapping machine & wrapping machine series(KY-150KB low speed film strapping machine and KY-260KB high speed film strapping machine. KY-300SW cost effective wrapping machine and KY-400SW top high speed wrapping machine). Case packing machine series(KY-500ZX and KY-900ZX). Consumable series(BOPP, POF, PE, PVC and other film products).

The main product performance indicators and technical indicators have reached the international advanced level, and are mainly sold to domestic and foreign pharmaceutical, food and cosmetics, household chemicals, hardware, toys, and other industries. The company adheres to the 'science and technology innovation', attaches great importance to the construction of scientific research team, pays attention to technology R&D and continuously product innovation. Committed to the vision of 'become a world-class supplier of post-packaging system', we adhere to the values of 'God help those who help themselves' and continue to consolidate the status of the industry leader.

Automatic Cartoning Machine

KY-120ZH

Main uses and feature

1. KY-120ZH Automatic packing machine is helping people to put stuff into cartons and close the cover automatically. Inserting leaflet and carving print is optional.
2. KY-120ZH is a classic model with stable performance and easy operation. One operator can conveniently manage the whole operation.
3. Cam transmission, is through twice heat treatment, oxygen nitrogen, salt carburizing surface wear-resistant, high temperature, the service life of ten years without deformation, life-long warranty.
4. Guide rails for import.
5. Automatic folding instructions, automatic stamping, automatic opening, folding instructions, boxing, closing function.



Technical Parameter:

No.	Name	Value
1	Total power	3.5KW
2	Working voltage	380/50V
3	Box speed	80-120box/min.
4	Carton paper	250-350g (white card) or 300-350g (gray card) /m ²
5	Carton size	L(45-200)mm * W(32-130)mm * H(15-55)mm
6	Starting current	8A
7	Full load transfer current	2.5A
8	Air consumption	5-8L/min
9	Compressed air	0.6-0.8MPA
10	Total weight	800KG
11	Shape size	L1200 * W1000 * H1650 mm (connection part is not included)



Automatic Cartoning Machine

KY-180ZH

Main uses

KY-180ZH automatic medium-speed packing machine is a model that our company has innovated and designed on the basis of introducing foreign first-class technology. This machine is a fully automatic continuous medium-speed packing machine. It integrates high-performance products integrating machine, light, points and gas, and can form a packing production line with it. Scope of supplication: packing boxes for medicines, foods, daily necessities, cosmetics, etc.

Technical Parameter:

No.	Name	Value
1	Total power	5KW
2	Working voltage	380/50V
3	Box stabilization speed	120-180box/min
4	Carton paper	250-350g (white card) or 300-350g (gray card) /m ²
5	Carton size	L(65-180)mm * W(30-95)mm * H(18-60)mm
6	Manual specification	L(70-200)mm * W(70-160)mm
7	Manual paper	50-65g/ m ²
8	Air consumption	5-8L/min
9	Compressed air	0.6-0.8MPA
10	Total weight	1300KG
11	Shape size	L3300 * W1200 * H1780 mm (connection part is not included)
12	Noise	≤75dB

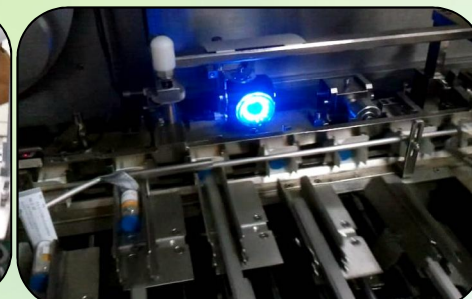


Automatic Cartoning Machine

KY-300ZH

Technical Parameter:

No.	Name	Value
1	Packing machine total power	7.5KW
2	Working voltage	380/50V
3	Box stabilization speed	200-280box/min.
4	Carton paper	250-350g (white card) or 300-350g (gray card) /m ²
5	Carton size	L(50-160)mm * W(30-70)mm * H(15-50)mm
6	Manual specification	L(70-230)mm * W(70-230)mm
7	Manual paper	50-65g/ m ²
8	Air consumption	5-8L/min
9	Compressed air	0.6-0.8MPA
10	Total weight	2500KG
11	Shape size (connection part is not included)	L4300 * W1700 * H2000 mm
12	Noise	≤75dB



Cartoning Machine Details

✓ carton bin



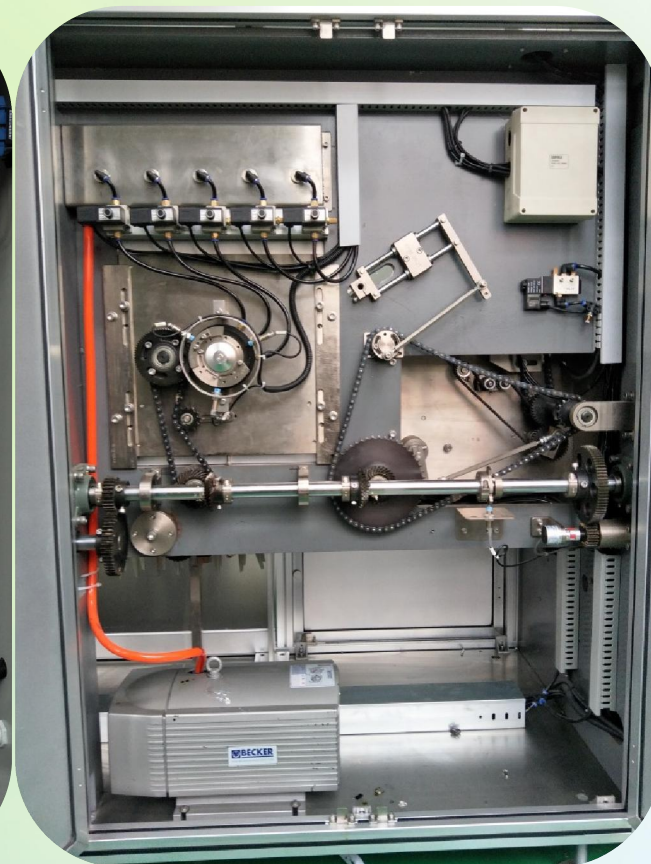
Feed bottle



✓ Control electric box



✓ Power drive



Case Packing Machine

KY-500ZX (push horizontal)

Feature ↵

1. The main drive adopts frequency conversion speed regulation and PLC control technology, combined with man-machine interface to realize step less speed regulation, easy to operate, compact and reasonable structure, and high automation.↵
2. For the use of oil free pneumatic components, most of the moving parts have adopted a lifetime of humanized design that does not need oil injection for life, reducing the cost of use for the users. Small part of the sports parts need to be lubricated by the users to use a centralized lubrication scheme, refueling convenient, daily maintenance simple and convenient, noise at the same time, no oil pollution.↵
3. There are two ways to enter the box operation, manual feeding, automatic entering the box, convenient adjustment of equipment.↵
4. There are a variety of protection functions to stop in case of failure. Such as: stop automatically when the box is not full. ↵

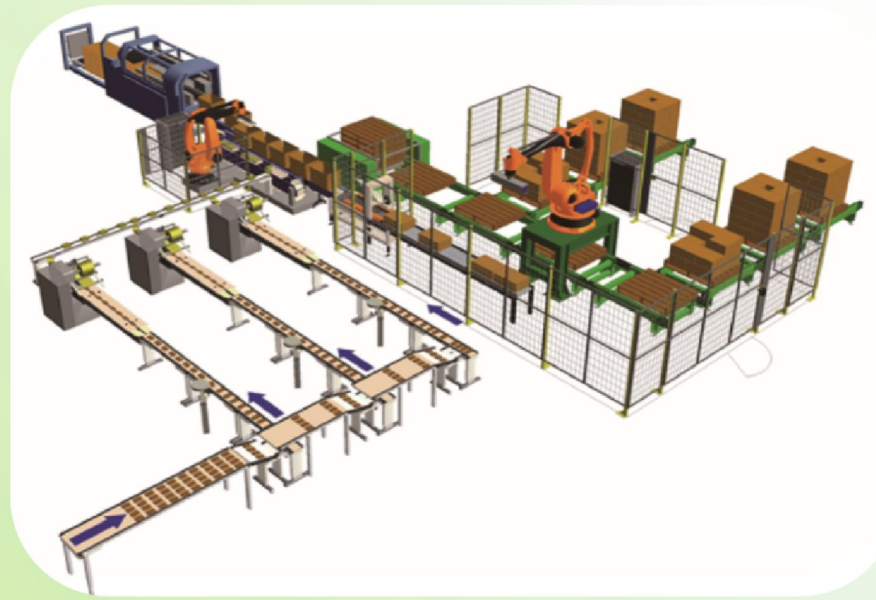


Case Packing Machine

KY-900ZX(vertical scratch)

Technical Parameter:

Name	Value
Output	4-7 carton/min. according to the size, number and arrangement of packing objects, the form of combination.
Carton size	L460 * W380 * H260mm Special spec. can be customized
Arrangement form	Such as the 5 row * 5column *4 layer
Packing product size	L(30-580) *W(25-450) * H(20-350)mm
Transmission height of front end equipment	850mm
Packing range	Medical box special machine
A door, window, cover	Plexiglas
Equipment material	Main frame carbon steel baking paint, contact parts with packing box adopts SUS304
Total power supply	Less than 8KW
Single machine power	5KW
Air consumption	800 liters/points
Gas pressure	0.7MPa
Weight	Less than 1.2 tons
Mainframe size	L4100 * W2350 * H2300 mm (connection part is not included)
Working voltage	380V/50HZ



Low Speed Strapping Machine

KY-150KB

Main uses

The machine uses the PE film belt to automatically count, stack and tie up the material and save energy. It is widely used in the automatic collection packing of many articles in pharmaceutical, food, culture appliances and other industries, especially in the pharmaceutical industry.

Performance characteristics

1. The machine is made of stainless steel and meets the requirements of GMP, PLC control system, man-machine interface operation can adjust the quantity of bundles arbitrarily. 30-80mm wide film bag can be selected to achieve maximum energy saving.
2. The machine is a stable in operation, simple in operation and convenient in maintenance. It can replace the different packing specifications within 20 min., it can be used in single machine and can be used with front end equipment (packing machine, printer, weighing machine and so on). It is the first choice to replace the box packing in the industry.



Technical Parameter:

No.	Name	Value
1	One bundle size	Below L200 * W130 * H280mm Above L50 * W50 * H30mm
2	Bundles of speed	8-15 packs/min.
3	Working pressure	0.5-0.6 MPA
4	Working power	220/50 V/HZ
5	Motor power	500W
6	Discharge	0.2 M/min.
7	Shape size	L1600 * W600 * H1500 mm (connection is not included)
8	Equipment weight	300KG

High Speed Strapping Machine

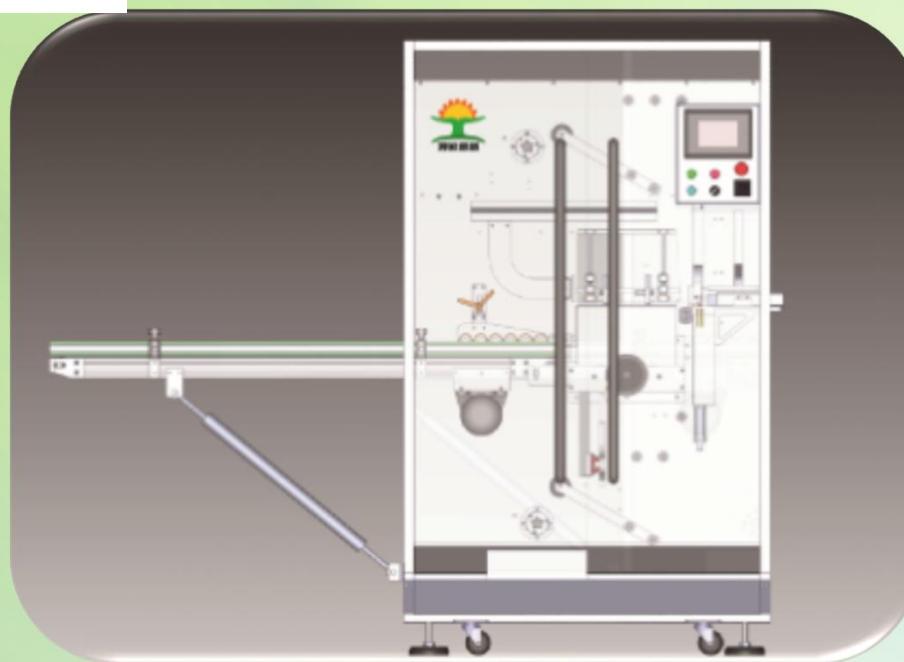
KY-260KB

Main uses

The machine uses the PE film belt to automatically count, stack and tie up the material and save energy. It is widely used in the automatic collection packing of many articles in pharmaceutical, food, culture appliances and other industries, especially in the pharmaceutical industry.

Technical Parameter:

No.	Name	Value
1	Packing machine total power	2.5KW
2	Carton specification	L(150-300)* W(35-250)* H(12-40) mm
3	Air consumption	300L/MIN.
4	Compressed air	0.6MPA
5	Bundles of stable speed	20-30 packs/min.
6	Noise	≤75DB
7	Working voltage	380/50 V/HZ
8	Shape size (connection is not included)	L1200 * W1050 * H1850 mm
9	Equipment weight	700KG



Wrapping Machine

KY-300SW

PERFORMANCE CHARACTERISTICS ↵

1. Waterproof, moisture proof and pollution prevention.↵
2. Instant sealing, heat seal no material, cold packing, no effect on pharms thermal sensitive products. ↵
3. Automatic paste anti fake easy pull line.↵
4. Automatic feeding, stacking, packing, heat sealing, finishing and counting. ↵
5. The electrical system is controlled by PLC program to ensure stable and reliable operation. ↵
6. Automatic zero adjustment, reset function. ↵
7. The packing speed can be controlled by infinitely variable speed. If you replace the mold and a small number of parts, you can pack different sizes of the box. ↵
8. The packing speed of the whole machine is fast, high efficiency and energy saving. ↵



Technical Parameter:↵

No.↵	Name↵	Value ↵
1↵	Total power↵	4.6KW ↵
2↵	Working voltage ↵	380/50V ↵
3↵	Box speed ↵	20-35packs/min.↵
4↵	Carton size ↵	L(50-300)mm * W(40-150)mm H(30-900)mm↵
5↵	Working pressure ↵	0.4-0.6MPA↵
6↵	Total weight ↵	600KG ↵
7↵	Shape size ↵ (connection part is not included)	L1600 * W850 * H1660 mm↵
8↵	Noise ↵	≤60dB↵



Wrapping Machine

KY-400SW

Technical Parameter:



No.	Name	Value
1	Total power	4.5KW
2	Working voltage	380/50V
3	Box speed	20-40packs/min.
4	Carton size	L(100-300)mm * W(45-260)mm * H(20-120)mm
5	Compressed air	0.6MPA
	Air consumption	300L/MIN.
6	Total weight	1500KG
7	Shape size (connection part is not included)	L2500 * W1000 * H1700 mm
8	Noise	≤75dB



Automatic Baler

KY-200D

Performance characteristics

1. This machine is the most popular model with fast bundling speed, low failure rate and wide range of applications.
2. The tin parts of the machine are all cam structures, easy to operate and easy to maintain, they are more firm and efficient than semi-automatic strapping machine.
3. The storage capacity can be adjusted freely accordingly to the size of the bow frame, and the size of the bow can be freely chosen according to the customer needs.
4. The form of binding: equal 1 channel or multichannel, with manual, automatic continuous play, ball switch, foot switch.

Technical Parameter:

No.	Name	Value
1	Mechanical size	W140 * D600 * H1540mm
2	Applicable bandwidth	9/12/13.5/15/18mm optional
3	Power supply	0.85KVA, 1/3PH, 50HZ
4	Banding rate	2.3SEC/MIN.ACYLE
5	Arch size	W(650-2850) * H(250-1400) mm
6	Tighten force	5-80kg
7	Equipment weight	280KG



Automatic Packer

KY-600DB

Performance characteristics ↵

1. This machine is specially designed for automatic baling, with power rollers on the table, which is suitable for connecting the power transmission line/pipeline to unmanned operation. ↵
2. The size and weight of the case can be designed according to the needs of customers. ↵
3. Driving part of dustproof cover is designed specially. It operates in a silent and powerful way with automatic stop function to save electricity. ↵
4. The form of binding: manual parallel 1 or multi-channel, photoelectric control 1-2 channels, 3-6 options. ↵



Weighing Machine

KYC-100/200

Application

It is used for automatic weight detection, upper and lower limit discrimination or weight classification in various automation pipelines and logistics transportation systems. Widely used in the pharms, food, toys, hardware, chemical, logistics and other industries in line testing.

In additional, it can directly replace manual weighing to improve production efficiency and the consistency, ensure reliability of weighing.

Feature:

- Large size color touch screen interface, simple operation.
- Reinforced stainless steel 304 rack, comply with GMP and HACCP spec.
- Simple mechanical structure for quick disassembly, cleaning and maintenance.
- 200 kinds of product presuppositions, convenient to switch.
- Auto zero point analysis and tracking system to ensure stable detection.
- Embedded temperature and noise compensation system to ensure reliable data.
- Dynamic weight compensation technology. The test data is more real and effective.
- Parameter settings are password protected for administrators operate only.
- Powerful self diagnosis function, which effectively improve the efficiency of operator fault handling.



Stacking manipulator/spider hand

ABB



Feature:

Has an impressive 450 kg payload capacity, up to 3.2 meters, this robot high inertia wrist is double that of rivals, enable it to rotate heavier and bigger products than other robots. with the superior speed IRB 760 is particularly suitable for pallet packing beverage, building materials and chemicals.



Feature:

IRB 360 series include the load for 1 kg, 3 kg, 6 kg and 8 kg and horizontal move range is 800 mm, 1130 mm and 1600 mm model, it means IRB 360 almost can meet any demand. IRB 360 has better advantages on sports performance, taking time short, precision higher, it can operate fastly in narrow or broad space at high speed, error is very small. each Flex Picker flange tool is new designed, to install bigger fixture, thus treat the assembly line packing products from synchronous belt with high efficiency.