

# HX-002

## 经济型超声波软管灌装封尾机

### ECONOMIC ULTRASONIC TUBE FILLER AND SEALER

Since 1999

**HX MACHINE**®



#### 性能与特点:

- ★ 本机采用超声波技术封口、封口效果稳定持久；封口处纹路清晰、不变形；
- ★ 手工落管、按压启动按钮，机器自动对标、灌装、封口、打码及切尾，操作方便快捷；
- ★ 自主研发数字化超声波自动追频电箱，无需人工调整频率，增加功率自动补偿功能，不会因使用时间长而导致机器功率下降，可根据软管材质及尺寸自由调节功率，出力稳定，故障率极低，使用寿命比普通电箱更长；
- ★ 采用PLC触摸屏控制，操作方便；
- ★ 采用日本松下高灵敏对标电眼配置步进马达，对标速度快且精准；
- ★ 采用膏体液体两用灌装机，灌装精度可控制在±1%；
- ★ 整机用304不锈钢精制而成，耐酸性，耐腐蚀。

#### Features:

- ★ Adopts ultrasonic sealing technology, no need warm up time, more stable and neat sealing, no distortion and low reject rate less than 1%.
- ★ Manually feed the tube, press start button, machine could automatically identify the registration mark, filling, sealing with coding, end trimming.
- ★ Independent R & D for digital ultrasonic automatic tracking electrical control box, no need manual adjust the frequency, with power auto compensation function, avoiding the reduction of power after long time use. Could freely adjust the power based on tube material and size, stable and minimum the fault rate, extend the life span than the normal electrical box.
- ★ PLC with touch screen control system, providing friendly operation experience.
- ★ "Panasonic" high sensitive sensor with stepping motor, could track the registration mark precisely.
- ★ Equipped with filler for both liquid and cream, with filling tolerance within ± 1%.
- ★ Made of 304 stainless Steel, acid and alkali resistance, corrosion resistance.

#### 适用范围:

食品、医药、化妆品、化工等行业的各种塑料软管或铝塑管灌装封尾。

#### Application:

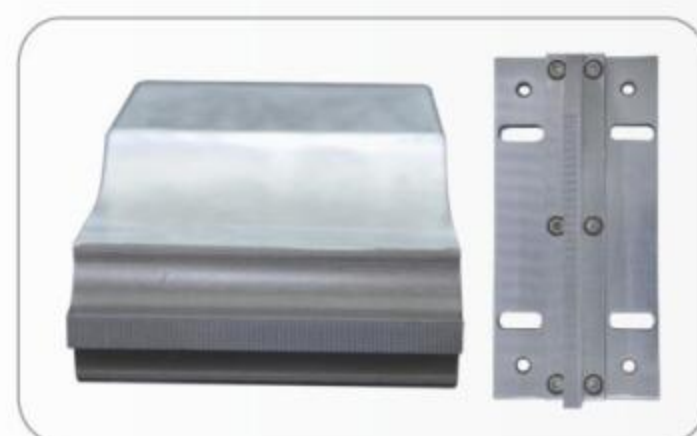
Widely used for food, pharmaceutical, cosmetics, chemical and other plastic, PE, aluminum laminated tube filling and sealing.

可选配置：加热搅拌灌装系统

Machine Options: Heating and mixing system for material hopper

#### 主要技术参数 MAIN TECHNICAL PARAMETERS

型号	Model	HX-002
频率	Frequency	20kHz
功率	Power	2KW
电压	Power Supply	AC220V/110V 1PH 50/60Hz
灌装范围	Filling Range	A: 3-30ml B: 6-60ml C: 10-120ml D: 25-250ml
灌装误差	Filling Accuracy	± 1%
产能	Capacity	10-18pcs/min
封口直径	Sealing Dia.	10-50mm
软管高度	Tube Height	10-250mm
工作气压	Air Pressure	0.6MPa
机器尺寸	Dimension	L1000*W780*1250mm
净重	N.W	180kgs



本机熔接模具  
Welding Horn



本机杯座（根据软管尺寸定做）  
Tube holder  
(Custom made according to tube's size)



软管样品  
Tube Sample

# HX-003

## 超声波异形软管封尾机

### SEMI AUTOMATIC ULTRASONIC TUBE SEALER FOR SPECIAL TUBE



#### 性能与特点:

- ★ 本机采用超声波技术封口、封口效果稳定持久；封口处纹路清晰、不变形、不爆管；
- ★ 手工落管、机器自动感应自动封口及切尾，操作方便快捷；
- ★ 自主研发数字化超声波自动追频电箱，无需人工调整频率，增加功率自动补偿功能，不会因使用时间长而使导致机器功率下降，可根据软管材质及尺寸自由调节功率，出力稳定，故障率极低，使用寿命比普通电箱更长；
- ★ 采用 PLC 触摸屏控制，操作方便；
- ★ 整机用 304 不锈钢精制而成，耐酸性，耐腐蚀；
- ★ 适用于连排管、单管、波浪形或圆弧形等异型软管封尾；
- ★ 配置自动感应系统，无管，不封尾不切边，降低机器及模具损耗率。

#### Features:

- ★ Adopts ultrasonic sealing technology, no need warm up time, more stable and neat sealing, no distortion and low reject rate less than 1%.
- ★ Manually feed the tube, machine could automatically start sealing and end trimming.
- ★ Independent R&D for digital ultrasonic automatic tracking electrical control box, no need manual adjust the frequency, with power auto compensation function, avoiding the reduction of power after long time use. Could freely adjust the power based on tube material and size, stable and minimum the fault rate, extend the life span than the normal electrical box.
- ★ PLC with touch screen control system, providing friendly operation experience.
- ★ Made of 304 stainless Steel, acid and alkali resistance, corrosion resistance.
- ★ Suitable for strip tube, normal tube, curved tube or customer-made shape tube sealing and trimming.
- ★ No tube, no sealing and trimming function, reducing the machine and mould loss.

#### 适用范围:

食品、医药、化妆品、化工等行业的各种塑料软管或铝塑管封尾。

#### Application:

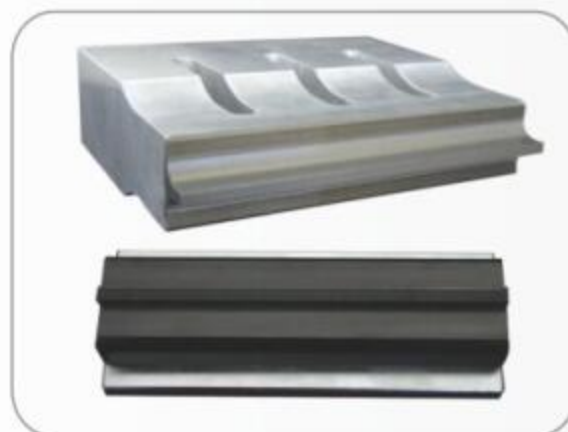
Widely used for food, pharmaceutical, cosmetics, chemical and other plastic, PE, aluminum laminated tube filling and sealing.

可选配置：部分软管可选配打码功能

**Machine Options:** Date coding function (for some kind of the tubes)

#### 主要技术参数 MAIN TECHNICAL PARAMETERS

型号	Model	HX-003
频率	Frequency	20kHz
功率	Power	2600W
电压	Power Supply	AC220V/110V 1PH 50/60Hz
封口直径	Sealing Dia.	10-50mm
软管高度	Tube Height	10-250mm
产能	Capacity	8-18pcs/min
工作气压	Air Pressure	0.5-0.6MPa
机器尺寸	Dimension	L560*W537*880mm
净重	N.W	105kgs



本机熔接模具  
Welding Horn



本机杯座（根据软管尺寸定做）  
Tube holder  
(Custom made according to tube's size)



软管样品  
Tube Sample

**HX-005**

## 连排管超声波软管灌装封尾机

### 5 TUBES STRIPS FILLER AND SEALER

Since 1999

**HX MACHINE****性能与特点:**

- ★ 本机特为连排软管灌装封尾研发，适用于连排管批量生产；
- ★ 手工落管、机器自动灌装、封口及切尾，操作方便快捷；
- ★ 采用超声波技术封口、封口效果稳定持久；封口处纹路清晰、不变形、不爆管；
- ★ 自主研发数字化超声波自动变频电箱，无需人工调整频率，增加功率自动补偿功能，不会因使用时间长而使导致机器功率下降，可根据软管材质及尺寸自由调节功率，出力稳定，故障率极低，使用寿命比普通电箱更长；
- ★ 采用 PLC 触摸屏控制，操作方便；
- ★ 整机用304不锈钢精制而成，耐酸性，耐腐蚀；
- ★ 采用蠕动泵灌装机，灌装精度高，标准机器适用于液体灌装；
- ★ 配置自动感应系统，无管，不灌装不封尾，降低机器及模具损耗率；
- ★ 采用六工位分割器精准定位，减少次品率。

**Features:**

- ★ Machine is specially designed for 5 in 1 tubes, suitable for mass production of 5 in 1 tubes.
- ★ Manually tube feeding, automatic filling, sealing, end trimming.
- ★ Adopts ultrasonic sealing technology, no need warm up time, more stable and neat sealing, no distortion and low reject rate less than 1%.
- ★ Independent R&D for digital ultrasonic automatic tracking electrical control box, no need manual adjust the frequency, with power auto compensation function, avoiding the reduction of power after long time use. Could freely adjust the power based on tube material and size, stable and minimum the fault rate, extend the life span than the normal electrical box.
- ★ PLC with touch screen control system, providing friendly operation experience.
- ★ Made of 304 stainless Steel, acid and alkali resistance, corrosion resistance.
- ★ Standard equipped with peristaltic pump filling system, high accuracy filling, and suitable for liquid filling.
- ★ No tube, no fill, no tube, no seal function, reducing the machine and mould loss.
- ★ Cam indexing system could position precisely for six working stations.

**适用范围:**

食品、医药、化妆品、化工等行业连排管灌装封尾。

**Application:**

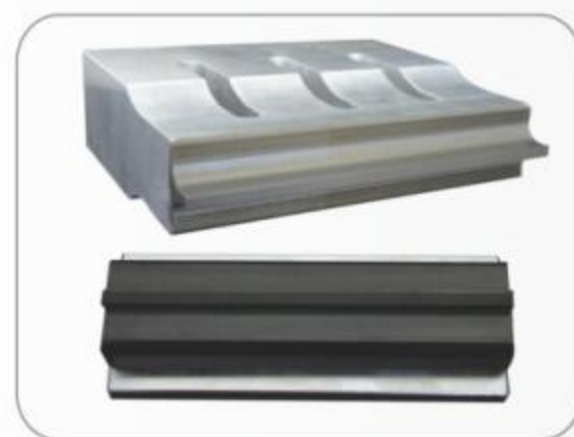
Widely used for food, pharmaceutical, cosmetics and chemical 5 in 1 tube filling and sealing.

**可选配置:** 膏体灌装机

**Machine Options:** Custom-made filling system for cream product.

**主要技术参数 MAIN TECHNICAL PARAMETERS**

型号	Model	HX-005
频率	Frequency	15kHz
功率	Power	2600W
电压	Power Supply	AC220V/110V 1PH 50/60Hz
灌装范围	Filling Range	1-10ml (蠕动泵精准灌装) peristaltic pump filling
产能	Capacity	10-20pcs/min
封口长度	Tube Height	5-50mm
软管高度	Tube Height	10-100mm
工作气压	Air Pressure	0.6MPa
用气量	Air Consumption	0.35m <sup>3</sup> /min
机器尺寸	Dimension	L1300*W1010*H1550mm
净重	N.W	330kgs



本机熔接模具  
Welding Horn



本机杯座 (根据软管尺寸定做)  
Tube holder  
(Custom made according to tube's size)



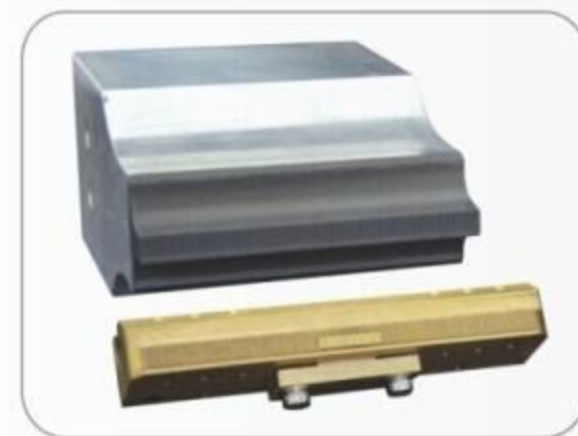
软管样品  
Tube Sample

**HX-006**

# 转盘式超声波软管灌装封尾机

## SEMI-AUTO ULTRASONIC TUBE FILLER AND SEALER

Since 1999  
**HX MACHINE**®



本机熔接模具  
Welding Horn



本机杯座 (根据软管尺寸定做)  
Tube holder  
(Custom made according to tube's size)



软管样品  
Tube Sample

### 性能与特点:

- ★ 本机采用手工落管、机器自动对标、灌装、封口、打码、切尾及成品输出，操作轻松快捷；
- ★ 十工位分割器精准定位，减少次品率；
- ★ 采用超声波技术封口、封口效果稳定持久；封口处纹路清晰、不变形；
- ★ 自主研发数字化超声波自动变频电箱，无需人工调整频率，增加功率自动补偿功能，不会因使用时间长而导致机器功率下降，可根据软管材质及尺寸自由调节功率，出力稳定，故障率极低，使用寿命比普通电箱更长；
- ★ 采用 PLC 触摸屏控制，配置故障报警系统，故障信息显示在触摸屏上，一目了然，可快速定位并解决问题；
- ★ 整机用304不锈钢精制而成，耐酸性，耐腐蚀；
- ★ 本机配置自动识别系统，无管不灌装不封口，降低机器及模具损耗率；
- ★ 采用防滴漏灌装头。

### Features:

- ★ Manually tube feeding, automatic registration mark identifying, filling, sealing with coding, end trimming, tube out feeding.
- ★ Cam indexing system could position precisely for ten working stations.
- ★ Adopts ultrasonic sealing technology, no need warm up time, more stable and neat sealing, no distortion and low reject rate less than 1%.
- ★ Independent R & D for digital ultrasonic automatic tracking electrical control box, no need manual adjust the frequency, with power auto compensation function, avoiding the reduction of power after long time use. Could freely adjust the power based on tube material and size, stable and minimum the fault rate, extend the life span than the normal electrical box.
- ★ PLC with touch screen control system with alarm system, could directly view the alarm information on the touch screen, could locate the problem and solve immediately.
- ★ Made of 304 stainless Steel, acid and alkali resistance, corrosion resistance.
- ★ No tube, no fill, no tube, no seal function, reducing the machine and mould loss.
- ★ Adopts Anti-dripping filling nozzle.

适用范围：食品、医药、化妆品、化工等行业的各种塑料软管或铝塑管灌装封尾。

Application: Widely used for food, pharmaceutical, cosmetics, chemical and other plastic, PE, aluminum laminated tube filling and sealing.

### 可选配置:

- ★ 自动加料装置；
- ★ 加热搅拌灌装系统；
- ★ 灌装吹气系统，适用于高粘稠度及拉丝料体；
- ★ 四面安全门；
- ★ 冷水机；
- ★ 接触物料部位可升级 316 不锈钢材质。

### Machine Options:

- ★ Auto Refill pump
- ★ Heating and mixing system for material hopper
- ★ Air blow system for high viscous and sticky material
- ★ Safety door
- ★ Industrial water chiller
- ★ 316L Stainless Steel Contact parts

### 主要技术参数 MAIN TECHNICAL PARAMETERS

型号	Model	HX-006
频率	Frequency	20kHz
功率	Power	2KW
电压	Power Supply	AC220V/110V 1PH 50/60Hz
灌装范围	Filling Range	A: 3-30ml B: 6-60ml C: 10-120ml D: 25-250ml E: 50-500ml
灌装误差	Filling Accuracy	± 1%
产能	Capacity	20-28pcs/min
封口直径	Sealing Dia.	10-50mm
软管高度	Tube Height	10-250mm
工作气压	Air Pressure	0.6MPa
用气量	Air Consumption	0.35m <sup>3</sup> /min
机器尺寸	Dimension	L1300*W900*H1550mm
净重	N.W	320kgs

**HX-007**

## 半自动超声波软管封尾机

### SEMI-AUTO ULTRASONIC TUBE SEALER

Since 1999

**HX MACHINE**<sup>®</sup>

本机熔接模具  
Welding Horn



本机杯座 (根据软管尺寸定做)  
Tube holder  
(Custom made according to tube's size)



软管样品  
Tube Sample

#### 性能与特点:

- ★ 本机采用超声波技术封口、封口效果稳定持久;封口处纹路清晰、不变形;
- ★ 手工落管、按压启动按钮,机器自动对标、封口、打码及切尾,操作方便快捷;
- ★ 自主研发数字化超声波自动追频电箱,无需人工调整频率,增加功率自动补偿功能,不会因使用时间长而使导致机器功率下降,可根据软管材质及尺寸自由调节功率,出力稳定,故障率极低,使用寿命比普通电箱更长;
- ★ 采用PLC触摸屏控制,操作方便;
- ★ 整机用304不锈钢精制而成,耐酸性,耐腐蚀;
- ★ 采用日本松下高灵敏对标电眼配置步进马达,对标速度快且精准;
- ★ 本机体积小,可直接放置桌面上使用;

#### Features:

- ★ Adopts ultrasonic sealing technology, no need warm up time, more stable and neat sealing, no distortion and low reject rate less than 1%.
- ★ Manually feed the tube, press start button, machine could automatically identify the registration mark, sealing (with coding), end trimming.
- ★ Independent R&D for digital ultrasonic automatic tracking electrical control box, no need manual adjust the frequency, with power auto compensation function, avoiding the reduction of power after long time use. Could freely adjust the power based on tube material and size, stable and minimum the fault rate, extend the life span than the normal electrical box.
- ★ PLC with touch screen control system, providing friendly operation experience.
- ★ Made of 304 stainless Steel, acid and alkali resistance, corrosion resistance.
- ★ "Panasonic" high sensitive sensor with stepping motor, could track the registration mark precisely.
- ★ Table top design, practical and compact.

#### 适用范围:

食品、医药、化妆品、化工等行业的各种塑料软管或铝塑管封尾。

#### Application:

Widely used for food, pharmaceutical, cosmetics, chemical and other plastic, PE, aluminum laminated tube filling and sealing.

可选配置: 打码功能

Machine Options: Date coding

#### 主要技术参数 MAIN TECHNICAL PARAMETERS

型号	Model	HX-007
频率	Frequency	20kHz
功率	Power	1800W
电压	Power Supply	AC220V/110V 1PH 50/60Hz
封口直径	Sealing Dia.	10-50mm
软管高度	Tube Height	10-250mm
产能	Capacity	10-18pcs/min
工作气压	Air Pressure	0.6MPa
机器尺寸	Dimension	L850*W600*730mm
净重	N.W	85kgs

**HX-009****全自动超声波软管灌装封尾机**

FULLY AUTOMATIC ULTRASONIC TUBE FILLER AND SEALER

Since 1999

**HX MACHINE****性能与特点:**

- ★ 本机由机器自动完成落管、对标、灌装、封尾印字、切尾、出成品等一系列动作，全自动操作，节省人工，降低生产成本；
- ★ 配备安全装置及过载保护；
- ★ 十工位分割器精准定位；
- ★ 采用超声波技术封口、封口效果稳定持久；封口处纹路清晰、不变形；
- ★ 自主研发数字化超声波自动变频电路，无需人工调整频率，增加功率自动补偿功能，不会因使用时间长而使导致机器功率下降，可根据软管材质及尺寸自由调节功率，出力稳定，故障率极低，使用寿命比普通电路更长；
- ★ 采用PLC触摸屏控制，配置故障报警系统，故障信息显示在触摸屏上，一目了然，可快速定位并解决问题；
- ★ 整机用304不锈钢精制而成，耐酸性，耐腐蚀；
- ★ 本机配置自动识别系统，无管不灌装不封口，降低机器及模具损耗率；
- ★ 采用防滴漏灌装头。

**Features:**

- ★ Machine could automatically finish tube feeding, registration mark identifying, filling, sealing with coding, end trimming, tube out feeding, fully automatic, save labor cost and lower production cost.
- ★ Machine is equipped with safety protection device and overload protection.
- ★ Cam indexing system could position precisely for ten working stations.
- ★ Adopts ultrasonic sealing technology, no need warm up time, more stable and neat sealing, no distortion and low reject rate less than 1%.
- ★ Independent R & D for digital ultrasonic automatic tracking electrical control box, no need manual adjust the frequency, with power auto compensation function, avoiding the reduction of power after long time use. Could freely adjust the power based on tube material and size, stable and minimum the fault rate, extend the life span than the normal electrical box.
- ★ PLC with touch screen control system with alarm system, could directly view the alarm information on the touch screen, could locate the problem and solve immediately.
- ★ Made of 304 stainless Steel, acid and alkali resistance, corrosion resistance.
- ★ No tube, no fill, no tube, no seal function, reducing the machine and mould loss.
- ★ Adopts Anti-dripping filling nozzle.

**适用范围:** 食品、医药、化妆品、化工等行业的各种塑料软管或铝塑管灌装封尾。

**Application:** Widely used for food, Pharmaceutical, cosmetics, chemical and other plastic, PE, aluminum laminated tube filling and sealing.

**可选配置:**

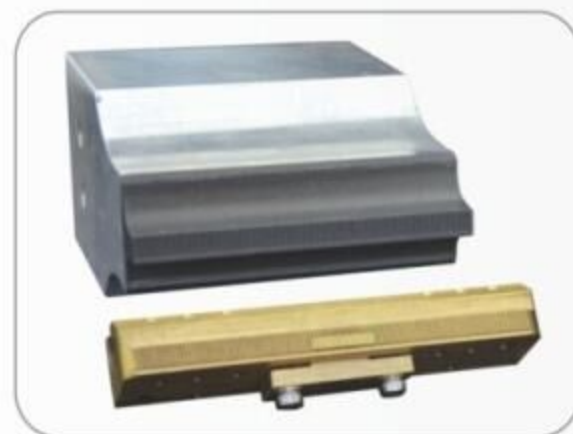
- ★ 自动加料装置；
- ★ 加热搅拌灌装系统；
- ★ 灌装吹气系统，适用于高粘稠度及拉丝料体；
- ★ 冷水机；
- ★ 接触物料部位可升级316不锈钢材质。

**Machine Options:**

- ★ Auto Refill pump
- ★ Heating and mixing system for material hopper
- ★ Air blow system for high viscous and sticky material
- ★ Industrial water chiller
- ★ 316L Stainless Steel Contact parts

**主要技术参数 MAIN TECHNICAL PARAMETERS**

型号	Model	HX-009
频率	Frequency	20kHz
功率	Power	2KW
电压	Power Supply	AC220V/110V 1PH 50/60Hz
灌装范围	Filling Range	A: 3-30ml B: 6-60ml C: 10-120ml D: 25-250ml E: 50-500ml
灌装误差	Filling Accuracy	± 1%
产能	Capacity	20-28pcs/min
封口直径	Sealing Dia.	10-50mm (Custom-made available)
软管高度	Tube Height	10-200mm
工作气压	Air Pressure	0.6-0.8MPa
用气量	Air Consumption	0.38m <sup>3</sup> /min
机器尺寸	Dimension	L1630*W1300*H1580
净重	N.W	400kgs



本机熔接模具  
Welding Horn



本机杯座 (根据软管尺寸定做)  
Tube holder  
(Custom made according to tube's size)



软管样品  
Tube Sample

# HX-20AF

## 自动灌装锁盖机 AUTOMATIC BOTTLE FILLING AND CAPPING MACHINE

Since 1999  
**HX MACHINE**®



### 性能与特点:

- ★ 本机采用活塞式灌装, 自动理瓶, 自动进瓶, 自动灌装;
- ★ 采用单独的进瓶退瓶光电, 伺服电机带动活塞缸使其灌装精度更加精准, 调节灌装量更方便, 确保机器高效而稳定的连续生产;
- ★ 采用人性化触摸式人机界面, 充分考虑各种素质人员对机械的接受能力, 在人机界面上增加了包括引导式调式模块, 故障查询模块等, 来方便操作和维修;
- ★ 外型美观, 结构合理, 维修拆卸简单, 无需特别专用工具;
- ★ 旋盖轮高度可调整, 使之适合不同高度和形状的瓶子旋盖。调节机构配有标尺或计算器, 使调节具有可视性。

### Features:

- ★ PLC control system, color touch screen display.
- ★ This machine has function of no bottle no filling, no filling no adding pump, no pump no adding outer cap (optional).
- ★ Working process: bottle unscrambling (optional)-- bottle washing (option)--filling--adding pump--adding outer cap--screw capping--labeling (option)--coding (option).
- ★ Machine is compact, high speed, high performance and high degree of automation.
- ★ Machine body and product touching part are made by 304 stainless steel, completely meets GMP requirements.
- ★ Peristaltic pump or piston pump measuring (if use position pump, when the filling volume difference is large, the corresponding pump body needs to be replaced), pneumatic adding cap, lifting screw capping. Has advantages of accurate filling, smooth screw capping, and simple operation.
- ★ Cap position device, makes sure plastic pipe which is longer or curved could go bottleneck accurately.
- ★ Filling nozzles dive into bottles to fill and rise slowly to prevent foaming. Catch type flexible screw lid/head, adjustable tightness.

### 适用范围:

食品、医药、化妆品、化工等行业的各种瓶罐灌装锁盖。

### Application:

Widely used for food, Pharmaceutical, cosmetics, chemical' s bottle filling and capping.



灌装工位  
Filling Station



锁盖工位  
Capping Station



样品  
Sample

### 主要技术参数 MAIN TECHNICAL PARAMETERS

型号	Model	HX-20AF
功率	Power	2KW
电压	Power Supply	AC220V/110V 1PH 50/60Hz
灌装误差	Filling Accuracy	± 1%
产能	Capacity	10-30pcs/min
旋盖直径	Cap Dia.	10-60mm
工作气压	Air Pressure	0.6-0.8MPa
净重	N.W	400kgs

# HX-101

## 面膜折叠装袋机

### FACIAL MASK FOLDING AND PACKING MACHINE

Since 1999

# HX MACHINE®



#### 性能与特点:

- ★ 本机用于单层或双层面膜布折叠并装袋;
- ★ 人工放膜, 自动折叠、取袋、开袋、入袋、输出;
- ★ 内置自动感应系统, 无膜不折叠, 无袋, 自动停机;
- ★ 采用PLC触摸屏控制, 操作方便;
- ★ 整机用304不锈钢及铝合金精制而成, 耐酸碱性, 耐腐蚀;
- ★ 本机配有置膜台面, 提升卫生程度。

#### Features:

- ★ This machine is used for one layer or double layers mask sheet folding and bagging.
- ★ Manually feed mask sheet, automatically fold mask, pick-up bag, open bag, put mask into bag, bag outfeed and collect.
- ★ Built-in auto sensor system, no bag, no fold, no bag, machine stop design.
- ★ Easy for operation by adopting PLC and touch screen control.
- ★ Made of 304 stainless Steel and aluminum alloy, acid and alkali resistance, corrosion resistance.
- ★ With mask sheet table, ensuring sanitation for mask production.

#### 适用范围:

化妆品行业的各种面膜布折叠装袋。

#### Application:

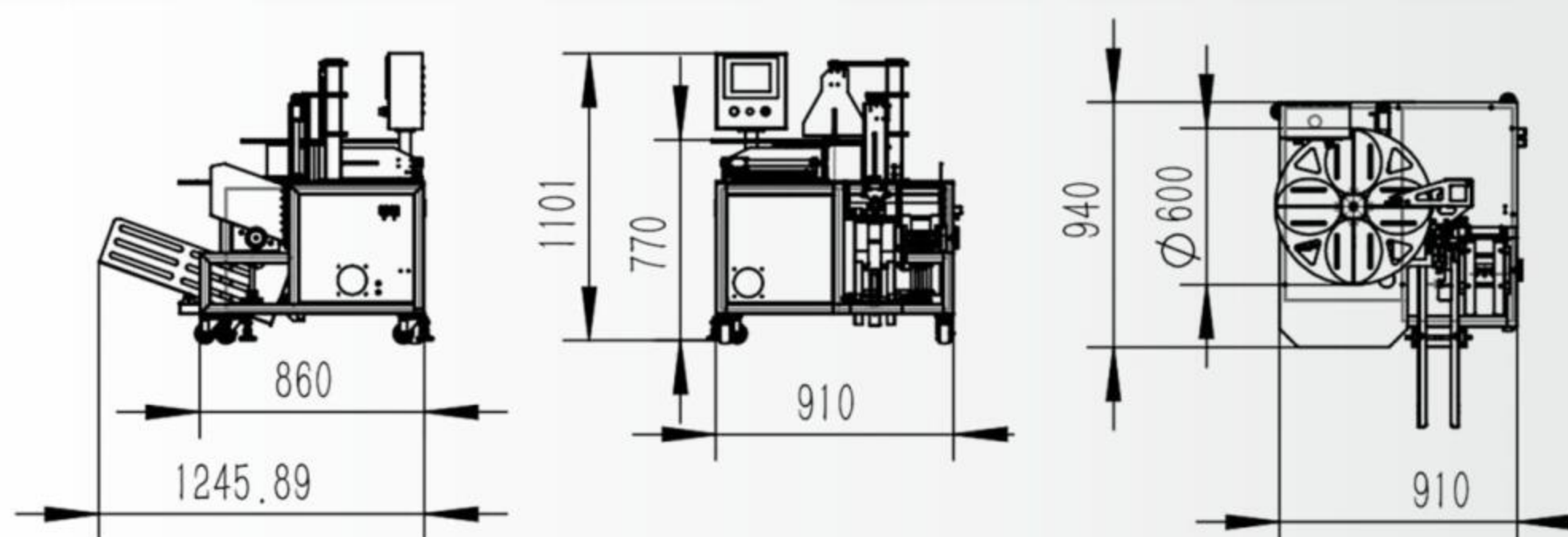
Mainly applied to cosmetics and beauty related facial mask folding and bagging.



衣领式折法 / Collar Folding



4折 / 4Times Folding



#### 主要技术参数 MAIN TECHNICAL PARAMETERS

型号	Model	HX-101
功率	Power	1.0KW
袋子宽度	Bag Width	110-160mm
袋子长度	Bag Length	140-220mm
电压	Power Supply	AC220V/110V 1PH 50/60Hz
产能	Capacity	1800-2100bags/min
工作气压	Air Pressure	0.6MPa
机器尺寸	Dimension	L940*W740*H1070mm
净重	N.W	220kgs



# HX-102

## 皮带式双工位面膜折叠包装机 CONVEYOR TYPE DOUBLE STATIONS MASK FOLDING PACKING MACHINE

Since 1999  
**HX MACHINE**®



### 性能与特点:

- ★ 本机适用于单层、双层或三层生物面膜折叠并装袋;
- ★ 本机由皮带输送面膜, 速度快且平稳, 两个工位可同时工作;
- ★ 工作流程: 手动放膜、自动折膜、自动装袋、空袋检测、自动压袋、成品输出;
- ★ 输送皮带可变频调速;
- ★ 双工位独立控制, 可任意关闭其中一组工位;
- ★ 不良品报警、剔除功能, 带有空袋检测功能, 可确保成品中没有空袋;
- ★ PLC+液晶触摸屏控制操作, 可在触摸屏上轻松设定参数, 产量和出错信息清晰直观;
- ★ 机器稳定性极佳, 是新一代折膜机器中的佼佼者。

### Features:

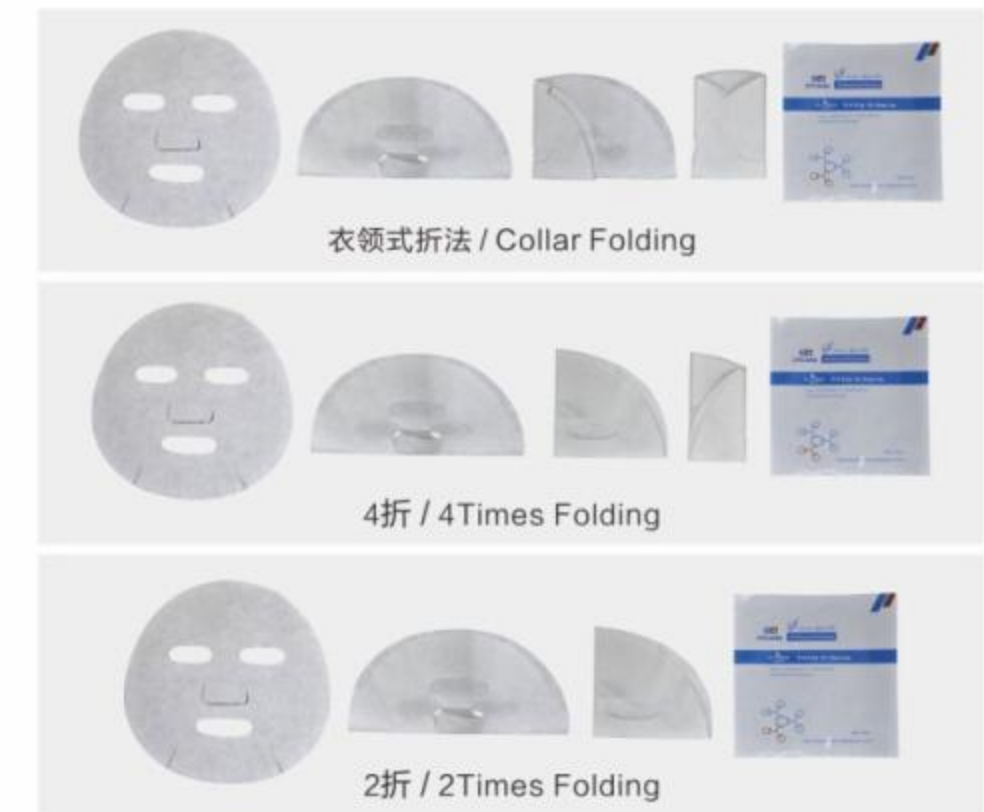
- ★ This machine is used for one layer, double layers and three layers mask folding and bagging.
- ★ With conveyor for the mask feeding, fast speed with stable performance under two working stations.
- ★ Working flow: manually feed mask sheet, automatically fold mask, open bag, put the mask into bag, detect empty bag, bag outfeed and collection.
- ★ Feed conveyor speed is adjustable by frequency inverter.
- ★ Independent control for the two working stations, each station can work independently.
- ★ Reject alarm, elimination function, which ensure there is no empty bag.
- ★ Easy for operation by adopting PLC and touch screen control, parameter setting and machine running state can be directly reviewed.
- ★ Great and stable performance, which is outstanding and top leader in the filed.

### 可选配置:

- ★ 透明安全防尘罩
- ★ 提升皮带
- ★ 面膜翻转入袋功能

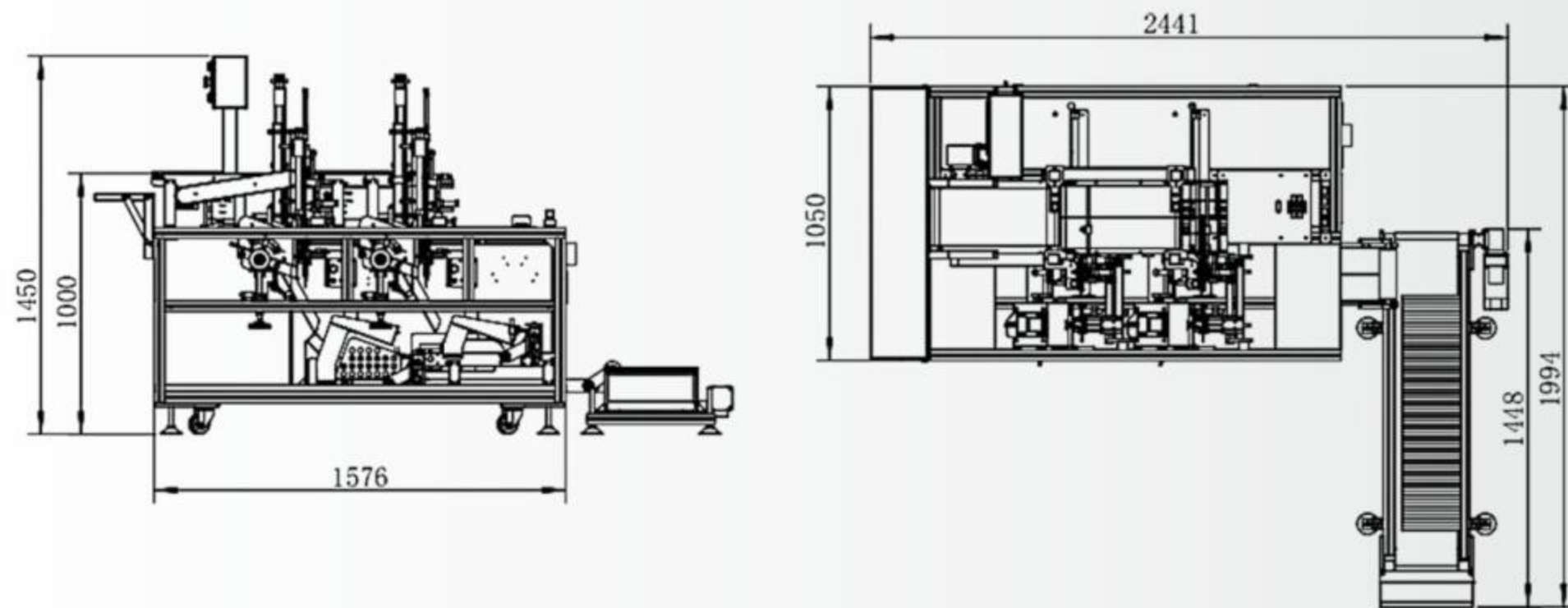
### Machine Options:

- ★ transparent safety cover
- ★ inclined belt
- ★ turn-over function before bagging



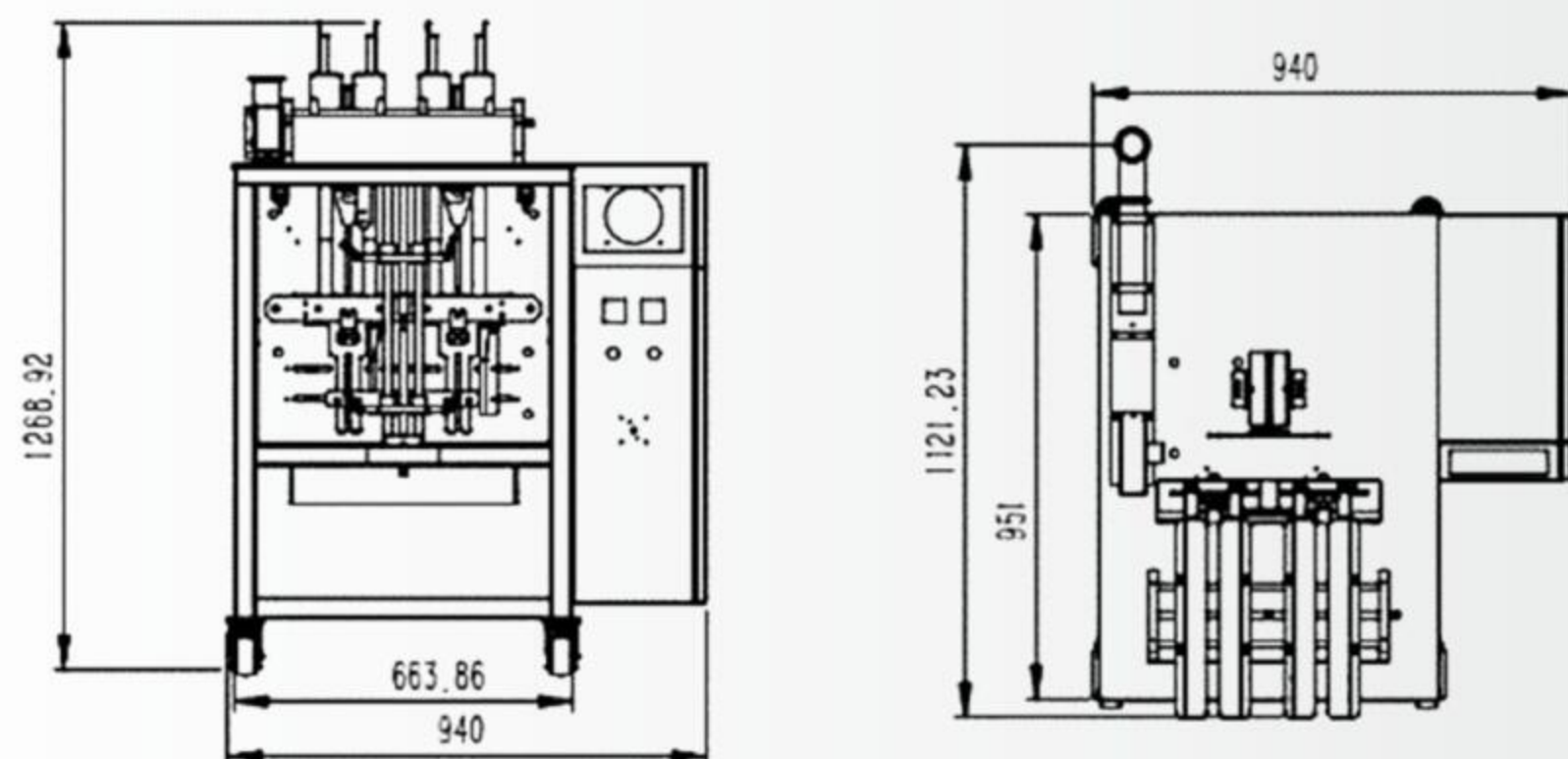
### 主要技术参数 MAIN TECHNICAL PARAMETERS

型号	Model	HX-102
功率	Power	1.2KW
二折袋子尺寸	Bag Size for Two times folding	L150*220mm W140-165mm
三折袋子尺寸	Bag Size for Three times folding collar type	L150-220MM W115-165mm
四折袋子尺寸	Bag Size for Standard three times folding	L150-220mm W95-165mm
电压	Power Supply	AC220V/110V 50/60Hz
产能	Capacity	2500-3000bags/min
工作气压	Air Pressure	0.6MPa 250L/min
机器尺寸	Dimension	1800*W1050*1450mm
净重	N.W	420kgs



# HX-200

## 自动2列面膜灌装封口机 AUTOMATIC 2 HEADS FACIAL MASK FILLER & SEALER



Since 1999

**HX MACHINE**®

### 性能与特点:

- ★ 本机用于折叠后的面膜灌装及封口;
- ★ 整机采用模块化设计易于维护, 调整简便;
- ★ 可自动完成取袋、面膜液充填、排气、封口、日期打印、成品输出, 整形等一系列动作;
- ★ 采用进口电气和气动元器件, 保障整机经久耐用, 触摸屏操作, 简洁明了;
- ★ 采用PID智能温度控制器, 具有良好的热平衡, 嵌入式热封机构, 热封纹路清晰;
- ★ 真空部分采用真空泵, 真空压力稳定, 动作可靠。

### Features:

- ★ This machine is used for one layer, double layers and three layers mask folding and bagging.
- ★ With conveyor for the mask feeding, fast speed with stable performance under two working stations
- ★ Working flow: manually feed mask sheet, automatically fold mask, open bag, put the mask into bag, detect empty bag, bag outfeed and collection.
- ★ Feed conveyor speed is adjustable by frequency inverter
- ★ Independent control for the two working stations, each station can work independently.
- ★ Reject alarm, elimination function, which ensure there is no empty bag.
- ★ Easy for operation by adopting PLC and touch screen control, parameter setting and machine running state can be directly reviewed.
- ★ Great and stable performance, which is outstanding and top leader in the filed.

### 可选配置:

- ★ 日期打印
- ★ 提升皮带
- ★ 特殊字粒

### Machine Options:

- ★ Date printing
- ★ Conveyor
- ★ Specific date code



样品 / Sample

### 主要技术参数 MAIN TECHNICAL PARAMETERS

型号	Model	HX-200
功率	Power	2.5KW
袋子宽度	Bad Width	100-160mm
袋子长度	Bag Length	110-220mm
电压	Power Supply	AC220V/110V 50/60Hz
包装材料	Bag Material	铝模、复合膜 Aluminum film, composite membrane
产能	Capacity	2000-2800bags/min
工作气压	Air Pressure	0.6MPa
机器尺寸	Dimension	L1300*W926*H1400mm
净重	N.W	180kgs

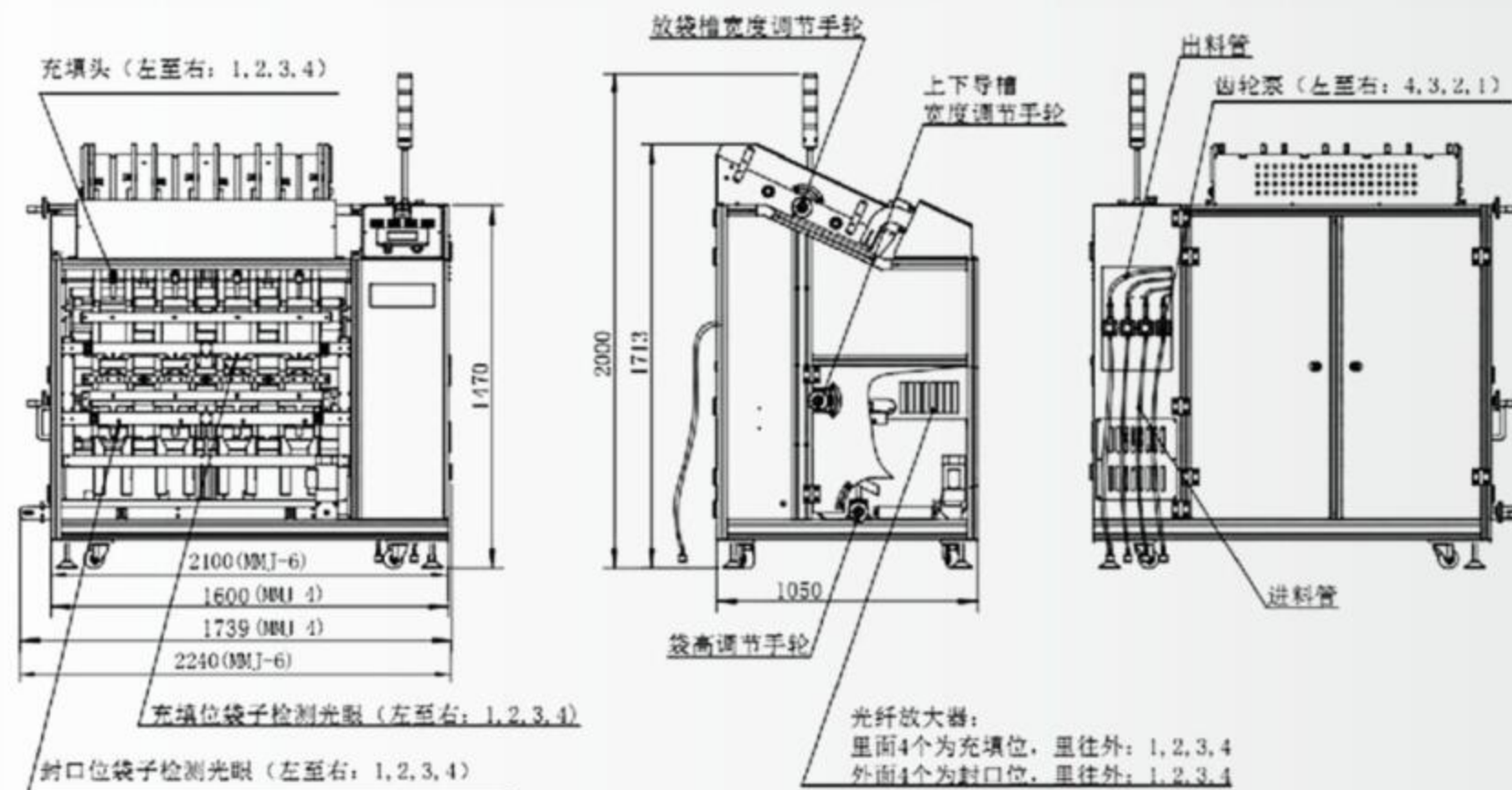
# HX-400

## 高速4列面膜灌装封口机

### AUTOMATIC 4 HEADS FACIAL MASK FILLER & SEALER

Since 1999

# HX MACHINE<sup>®</sup>



#### 性能与特点:

- ★ 本机用于折叠后的面膜灌装及封口;
- ★ 整机采用模块化设计易于维护, 调整简便;
- ★ 可自动完成取袋、开袋、面膜液充填、封口、日期打印、成品输出一系列动作;
- ★ PLC和触摸屏控制, 操作简洁明了, 采用进口电气和气动元器件, 保障整机经久耐用;
- ★ 采用PID智能温度控制器, 具有良好的热平衡, 嵌入式热封机构, 热封纹路清晰;
- ★ 真空部分采用真空泵, 真空压力稳定, 动作可靠。

#### Features:

- ★ This machine is folded mask filling and sealing.
- ★ Modular design, easy for maintenance and adjustment.
- ★ Machine could automatic finish bag feeding, opening, essence filling, bag sealing, production date coding and finished mask out feeding.
- ★ Touch screen and PLC control, easy for operation; imported electrical and pneumatical parts, durable and reliable.
- ★ PID temperature controller, upgrade sealing design, ensuring clear and neat sealing pattern.
- ★ With built-in vacuum pump for stable and reliable performance.

#### 可选配置:

- ★ 日期打印
- ★ 提升皮带
- ★ 特殊字粒

#### Machine Options:

- ★ Production date coding
- ★ Customer-made letters for coding
- ★ Lifting belt conveyor



样品 / Sample

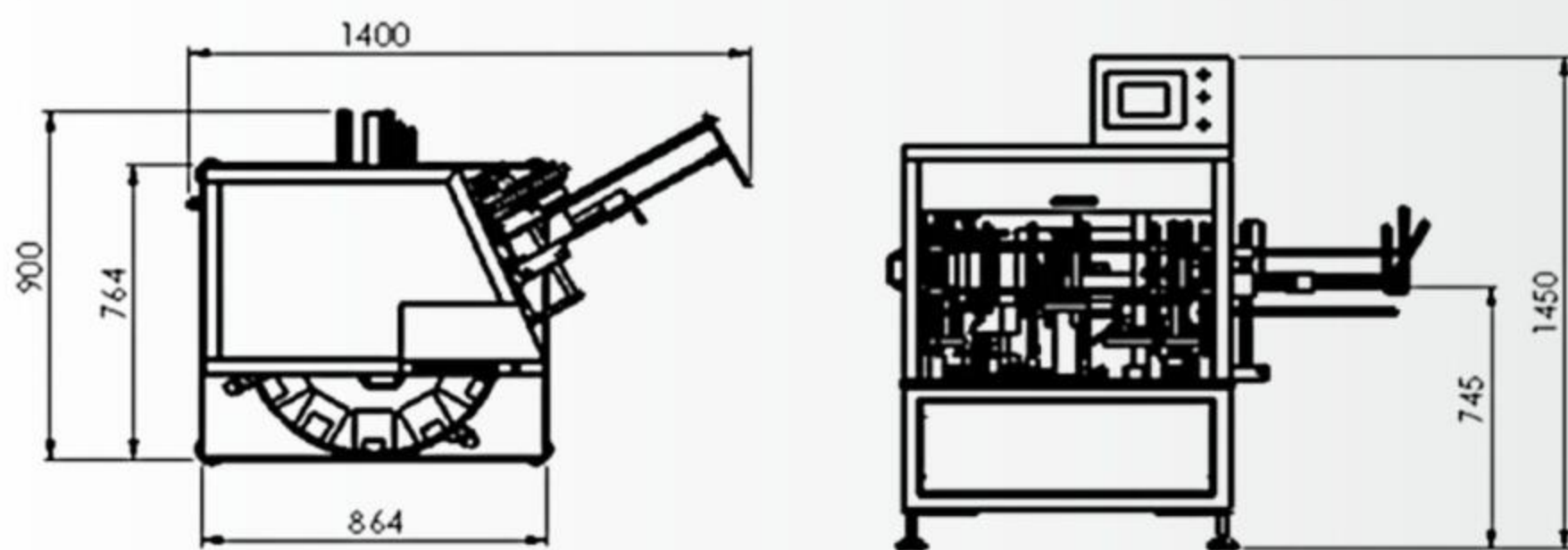
#### 主要技术参数 MAIN TECHNICAL PARAMETERS

型号	Model	HX-400
功率	Power	5KW
袋子宽度	Bag Width	90-170mm
袋子长度	Bag Length	110-220mm
通道数	Filling system	4列电子泵 4 heads Electrical Gear Pump
充填精度	Filling Accuracy	±0.2g
电压	Power Supply	AC380V/3ph 50/60Hz
包装材料	Bag Material	铝膜、复合膜 Heat Sealable Laminated Film
产能	Capacity	4500-5000bags/H
工作气压	Air Pressure	0.6MPa
机器尺寸	Dimension	L1700 × W1000 × H1700mm

# HX-CSA50

## 自动装盒机

### SEMI-AUTOMATIC CARTONING MACHINE



#### 性能与特点:

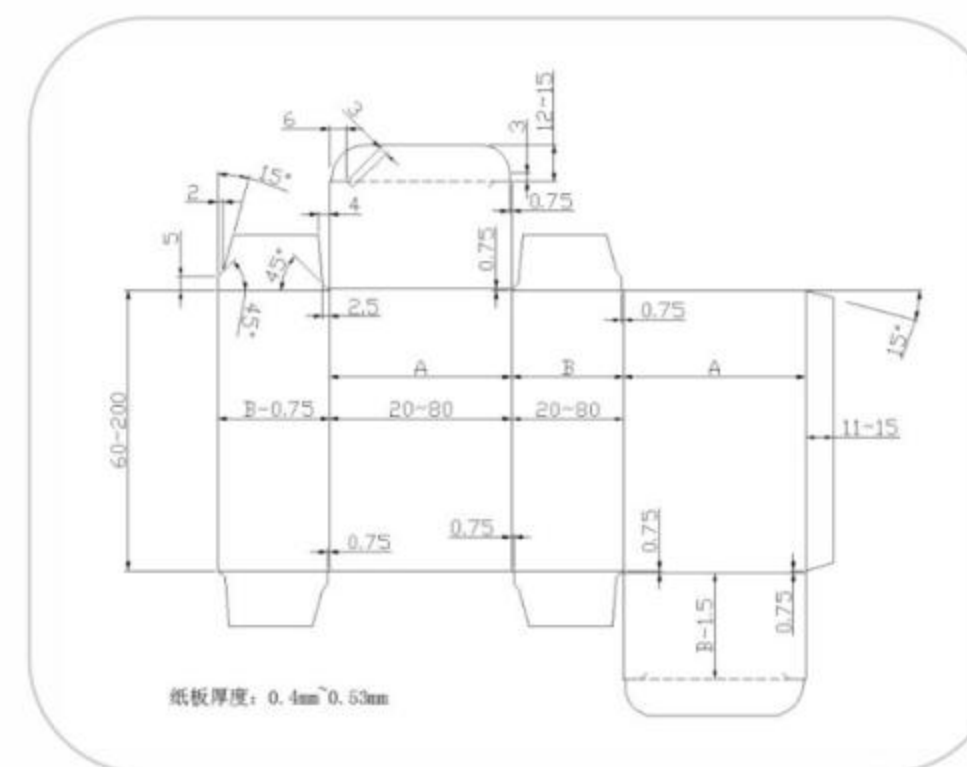
- ★ 采用 304 不锈钢机身，耐酸性，耐腐蚀性，符合 GMP 标准；
- ★ 占地小，适用范围广；
- ★ 采用 5.7 寸彩色触摸品控制，方便操作。

#### Features:

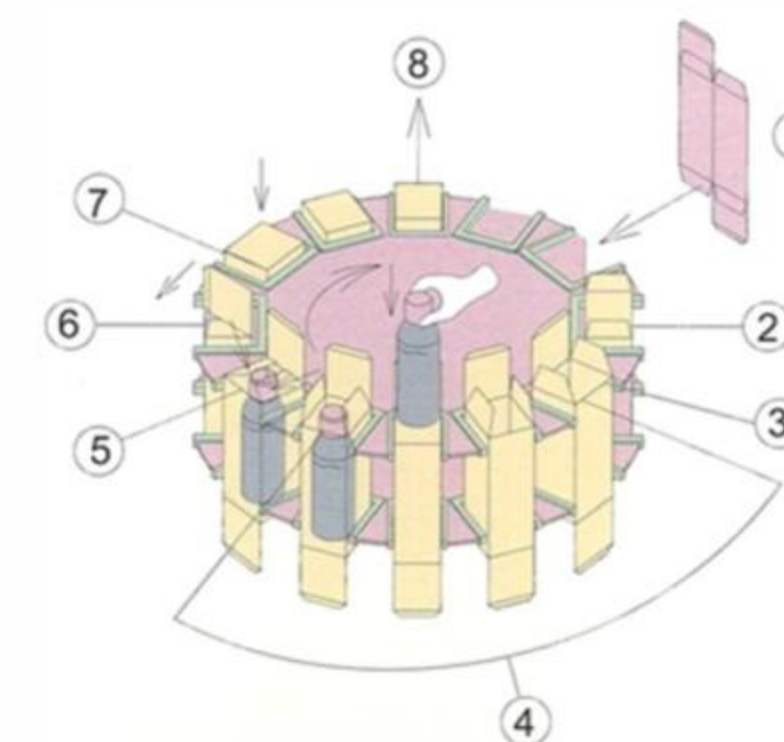
- ★ It is specially design to pack small quantities multi size box.
- ★ With low cost and only require small area, it is suitable for various sizes of box, the machine is a vertical type with multiple function and require a short time to change mold.
- ★ 304 stainless steel case
- ★ Advanced PLC control system combined with 5.7" colorful touch screen control panel, can easily set and change the packing parameters.



样品 / Sample



彩盒设计参考图  
Design Reference



#### 主要技术参数 MAIN TECHNICAL PARAMETERS

型号	Model	HX-CSA50
纸盒最小尺寸	Box' s smallest size	60*20*20mm
纸盒最大尺寸	Box' s largest size	200*80*80mm
生产速度	Capacity	20-60box/min
电源	Power Supply	AC220V 50/60Hz 1P
耗气量	Air consumption	150L/min
机器尺寸	Dimension	1400*900*1450mm
净重	N.W	250kgs