

中山市新鑫彩印刷包装有限公司

COLORICH PRINTING PACKAGING

2020

COLORICH PRINTING PACKAGING (ZHONG SHAN) co.,LTD.

2020 Creative Samples



01



Item NO. : XC-20-A-01
Size : 12*12*1.1cm
Process : outer: 350g c1 s
paper+4C+hot stamping+anti-scratch
matte lamination+inside: 375g gold
foil paper+4C+ anti-scratch matte
lamination +grey cardboard insert+
button +magnet close



Item NO. : XC-20-A-02
Size : 12*13*1.1cm
Process : outer: 350g c1 s
paper+4C+hot stamping+anti-scratch
matte lamination+inside: 375g gold
foil paper+4C+ anti-scratch matte
lamination +grey cardboard insert+
button +magnet close



Item NO. : XC-20-A-03
Size : 11.6*12.9*1.1cm
Process : outer: 350g c1 s
paper+4C+hot stamping+anti-scratch
matte lamination+inside: 375g gold
foil paper+4C+ anti-scratch matte
lamination +grey cardboard insert+
button +magnet close



Item NO. : XC-20-A-04
Size : 13*13*1.1cm
Process : outer: 350g c1 s
paper+4C+hot stamping+anti-scratch
matte lamination+inside: 375g gold
foil paper+4C+ anti-scratch matte
lamination +grey cardboard insert+
button +magnet close



Item NO. : XC-20-A-05
Size : 12.4*12.4*1.1cm
Process : outer: 350g c1 s
paper+4C+hot stamping+anti-scratch
matte lamination+inside: 375g gold
foil paper+4C+ anti-scratch matte
lamination +grey cardboard insert+
button +magnet close



Item NO. : XC-20-A-06
Size : 12.8*12.8*1.1cm
Process : outer: 350g c1 s
paper+4C+hot stamping+anti-scratch
matte lamination+inside: 375g gold
foil paper+4C+ anti-scratch matte
lamination +grey cardboard insert+
button +magnet close



Item NO. : XC-20-B-01
Size : 13.2*13.3*1.6cm
Process : outer 157g c2s
paper+4C+ anti-scratch matte
lamination +PET+glitter+inside:
157g c2s paper+4C+ anti-
scratch matte lamination + mirror
on lid + grey cardboard
insert+magnet close



Item NO. : XC-20-B-02-A
Size : 12*11.9*1.6cm
Process : outer 157g c2s
paper+4C+ anti-scratch matte
lamination +PET+glitter+inside:
157g c2s paper+4C+ anti-
scratch matte lamination + mirror
on lid + grey cardboard
insert+magnet close



Item NO. : XC-20-B-02-B
Size : 12*11.9*1.6cm
Process : outer 157g c2s
paper+4C+ anti-scratch matte
lamination +PET+glitter+inside:
157g c2s paper+4C+ anti-
scratch matte lamination + mirror
on lid + grey cardboard
insert+magnet close



Item NO. : XC-20-C-01
Size : 10.5*10.5*1.3cm
Process : outer: 157g c2s
paper+4C+hot stamping+spot
glitter+UV+ anti-scratch matte
lamination +inside: 157g c2s
paper+4C+ anti-scratch matte
lamination + mirror on lid + grey
cardboard insert+magnet close



Item NO. : XC-20-C-02
Size : 10*10.1*1.1cm
process : outer: 157g c2s
paper+4C+hot stamping+spot
glitter+UV+ anti-scratch matte
lamination +inside: 157g c2s
paper+4C+ anti-scratch matte
lamination + mirror in lid + grey
cardboard insert+magnet close



Item NO. : XC-20-C-03
Size : 9.2*9.9*1.4cm
process : outer: 157g c2s
paper+4C+hot stamping+spot
glitter+UV+ anti-scratch matte
lamination +inside: 157g c2s
paper+4C+ anti-scratch matte
lamination + mirror on lid + grey
cardboard insert+magnet close



Item NO. : XC-20-D-01
Size : 18.2*9*1cm
Process : Outer: 157g C2S
paper+4C+embossed+ anti-scratch
glossy lamination/pearl lamination
+inside: 157g c2s+4C+ anti-scratch
glossy lamination/pearl lamination
mirror in lid + grey cardboard
insert+magnet close



Item NO. : XC-20-D-02
Size : 16.5*10*1.1cm
Process : Outer: 157g C2S
paper+4C+embossed+ anti-scratch
glossy lamination/pearl lamination
+inside: 157g c2s+4C+ anti-scratch
glossy lamination/pearl lamination
mirror in lid + grey cardboard
insert+magnet close



Item NO. : XC-20-D-03
Size : 16.8*9.2*1cm
Process : Outer: 157g C2S
paper+4C+embossed+ anti-scratch
glossy lamination/pearl lamination
+inside: 157g c2s+4C+ anti-scratch
glossy lamination/pearl lamination
mirror in lid + grey cardboard
insert+magnet close



Item NO. : XC-20-E-01
Size : 16.8*12*2.2cm
Process : Outer: 157g C2S
paper+4C+hot stamping+ Spot
UV+ anti-scratch matte lamination
+inside: 157g c2s+4C+ anti-
scratch matte lamination+mirror in
lid + EVA insert+magnet close



Item NO. : XC-20-E-02-A
Size : 13.2*9.5*2.1cm
Process : Outer: 157g C2S
paper+4C+hot stamping+ Spot
UV+ anti-scratch matte lamination
+inside: 157g c2s+4C+ anti-
scratch matte lamination+mirror on
lid + EVA insert+magnet close



Item NO. : XC-20-E-02-B
Size : 13.2*9.5*2.1cm
Process : Outer: 157g C2S
paper+4C+hot stamping+ Spot
UV+ anti-scratch matte lamination
+inside: 157g c2s+4C+ anti-
scratch matte lamination+mirror on
lid + EVA insert+magnet close



Item NO. : XC-20-F-01-A
Size : 10*14.2*1.5cm
Process : outer: 157g c2s paper+4C+3 spot colors+hot stamping+glitter UV+ hot stamping +embossed+ anti-scratch matte lamination +butterfly card+inside: 157g c2s paper+4C+ 3 spot colors + glitter UV+235g gold foil paper+ anti-scratch matte lamination +mirror in lid+ grey cardboard insert+magnet close



Item NO. : XC-20-F-01-B
Size : 10*14.2*1.5cm
Process : outer: 157g c2s paper+4C+3 spot colors+hot stamping+glitter UV+ hot stamping +embossed+ anti-scratch matte lamination +butterfly card+inside: 157g c2s paper+4C+ 3 spot colors + glitter UV+235g gold foil paper+ anti-scratch matte lamination +mirror in lid+ grey cardboard insert+magnet close



Item NO. : XC-20-F-02-A
Size : 12.6*16.8*1.5cm
Process : outer: 157g c2s paper+4C+3 spot colors+hot stamping+glitter UV+ hot stamping +embossed+ anti-scratch matte lamination +butterfly card+inside: 157g c2s paper+4C+ 3 spot colors + glitter UV+235g gold foil paper+ anti-scratch matte lamination +mirror in lid+ grey cardboard insert+magnet close



Item NO. : XC-20-F-02-B
Size : 12.6*16.8*1.5cm
Process : outer: 157g c2s paper+4C+3 spot colors+hot stamping+glitter UV+ hot stamping +embossed+ anti-scratch matte lamination +butterfly card+inside: 157g c2s paper+4C+ 3 spot colors + glitter UV+235g gold foil paper+ anti-scratch matte lamination +mirror in lid+ grey cardboard insert+magnet close



Item NO. : XC-20-F-03-A
Size : 14.5*19.8*1.5cm
Process : outer: 157g c2s paper+4C+3 spot colors+hot stamping+glitter UV+ hot stamping +embossed+ anti-scratch matte lamination +butterfly card+inside: 157g c2s paper+4C+ 3 spot colors + glitter UV+235g gold foil paper+ anti-scratch matte lamination +mirror in lid+ grey cardboard insert+magnet close



Item NO. : XC-20-F-03-B
Size : 14.5*19.8*1.5cm
Process : outer: 157g c2s paper+4C+3 spot colors+hot stamping+glitter UV+ hot stamping +embossed+ anti-scratch matte lamination +butterfly card+inside: 157g c2s paper+4C+ 3 spot colors + glitter UV+235g gold foil paper+ anti-scratch matte lamination +mirror in lid+ grey cardboard insert+magnet close



Item NO. : XC-20-G-01-A
Size : 15.8*11.2*1.3cm
Process : outer: 157g c2s paper+4C+ anti-scratch matte lamination +hot stamping+inside: 182g gold foil paper+hot stamping+ anti-scratch matte lamination +mirror in lid+ grey cardboard insert+magnet close



Item NO. : XC-20-G-01-B
Size : 15.8*11.2*1.3cm
Process : outer: 157g c2s paper+4C+ anti-scratch matte lamination +hot stamping+inside: 182g gold foil paper+hot stamping+ anti-scratch matte lamination +mirror in lid+ grey cardboard insert+magnet close



Item NO. : XC-20-G-01-C
Size : 15.8*11.2*1.3cm
Process : outer: 157g c2s paper+4C+ anti-scratch matte lamination +hot stamping+inside: 182g gold foil paper+hot stamping+ anti-scratch matte lamination +mirror in lid+ grey cardboard insert+magnet close



Item NO. : XC-20-G-01-D
Size : 15.8*11.2*1.3cm
Process : outer: 157g c2s paper+4C+ anti-scratch matte lamination +hot stamping+inside: 182g gold foil paper+hot stamping+ anti-scratch matte lamination +mirror in lid+ grey cardboard insert+magnet close



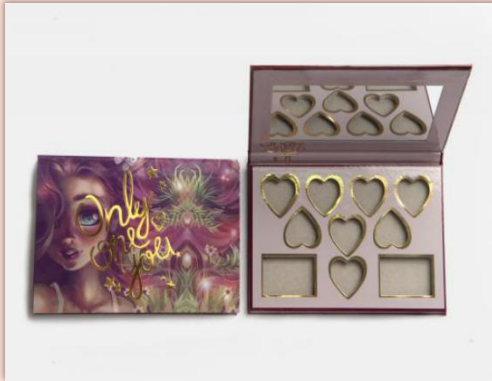
Item NO. : XC-20-H-01
Size : 11.7*8.4*1.1cm
Process : outer: 157g c2s paper+4C+ anti-scratch glossy lamination/pearl lamination +inside: 157g c2s paper+4C+ anti-scratch glossy lamination/pearl lamination + mirror in lid+ grey cardboard insert+magnet close



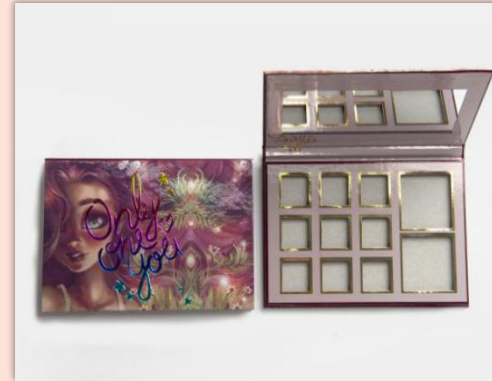
Item NO. : XC-20-H-02
Size : 13*12*1.1cm
Process : outer: 157g c2s paper+4C+ anti-scratch glossy lamination/pearl lamination +inside: 157g c2s paper+4C+ anti-scratch glossy lamination/pearl lamination + mirror in lid+ grey cardboard insert+magnet close



Item NO. : XC-20-H-03
Size : 15*7.2*1.1cm
Process : outer: 157g c2s paper+4C+ anti-scratch glossy lamination/pearl lamination +inside: 157g c2s paper+4C+ anti-scratch glossy lamination/pearl lamination + mirror in lid+ grey cardboard insert+magnet close



Item NO. : XC-20-I-02
Size : 15*10*1cm
Process : 157g c2s paper+4C+hot
stamping+embossed+ anti-scratch
glossy lamination/pearl lamination
+inside: 182g silver foil
paper+4C+ white+anti-scratch
glossy lamination/pearl lamination +
mirror in lid+ grey cardboard
insert+magnet close



Item NO. : XC-20-I-03
Size : 15.3*10*1cm
Process : 157g c2s paper+4C+hot
stamping+embossed+ anti-scratch
glossy lamination/pearl lamination
+inside: 182g silver foil
paper+4C+ white+anti-scratch
glossy lamination/pearl lamination +
mirror in lid+ grey cardboard
insert+magnet close



Item NO. : XC-20-I-04
Size : 9.3*13.3*1cm
Process : 157g c2s paper+4C+hot
stamping+embossed+ anti-scratch
glossy lamination/pearl lamination
+inside: 182g silver foil
paper+4C+ white+anti-scratch
glossy lamination/pearl lamination +
mirror in lid+ grey cardboard
insert+magnet close



Item NO. : XC-20-J-03
Size : 6.9*6.3*1cm
Process : outer 157g c2s
paper+4C+ + anti-scratch matte
lamination +inside 157g c2s +4C+
anti-scratch matte lamination +
grey cardboard insert+magnet
close+soft magnet



Item NO. : XC-20-J-04
Size : 10.6*7.2*1cm
Process : outer 157g c2s
paper+4C+ + anti-scratch matte
lamination +mirror in lid+inside 157g
c2s +4C+ anti-scratch matte
lamination + grey cardboard
insert+magnet close



Item NO. : XC-20-J-06
Size : 9*9*1cm
Process : outer 157g c2s
paper+4C+ + anti-scratch matte
lamination +mirror in lid+inside
157g c2s +4C+ anti-scratch matte
lamination + grey cardboard
insert+magnet close



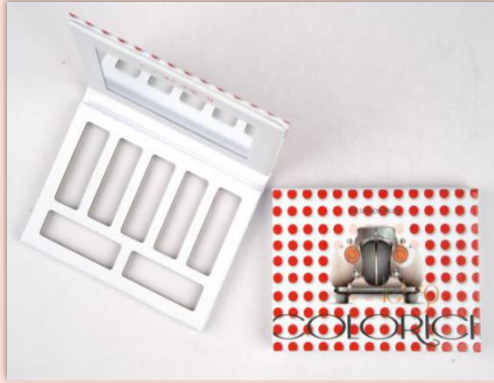
Item NO. : XC-20-J-07
Size : 7.4*5.4*1cm
Process : outer 157g c2s
paper+4C+ + anti-scratch matte
lamination +mirror in lid+inside 157g
c2s +4C+ anti-scratch matte
lamination + grey cardboard
insert+magnet close



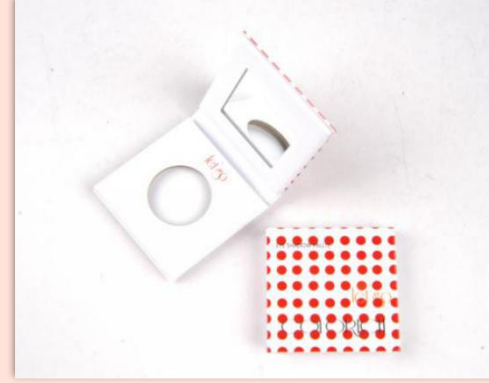
Item NO. : XC-20-J-09
Size : 13.5*5.7*0.8cm
Process : outer 157g c2s
paper+4C+ + anti-scratch matte
lamination +mirror on lid+inside
157g c2s +4C+ anti-scratch matte
lamination + grey cardboard
insert+magnet close



Item NO. : XC-20-J-12
Size : 12*7.6*1.2cm
Process : outer 157g c2s
paper+4C+ + anti-scratch matte
lamination +mirror on lid+inside
157g c2s +4C+ anti-scratch matte
lamination + grey cardboard
insert+magnet close



Item NO. : XC-20-J-01
Size: 11.1*8*1.1cm
Process : outer 157g c2s paper +4C+embossed+spot UV+ anti-scratch matte lamination +inside 157g c2s paper +4C+ anti-scratch matte lamination + mirror on lid+grey cardboard insert+magnet close



Item NO. : XC-20-J-02
Size : 5.1*5.3*1cm
Process : outer 157g c2s paper +4C+embossed+spot UV+ anti-scratch matte lamination +inside 157g c2s paper +4C+ anti-scratch matte lamination + mirror on lid+grey cardboard insert+magnet close



Item NO. : XC-20-J-05
Size : 4.3*4.5*0.6cm
Process : outer 300 g c2s paper +4C+embossed+spot UV+ anti-scratch matte lamination + grey cardboard insert+magnet close



Item NO. : XC-20-J-08
Size : 7.2*7.2*1.2cm
Process : outer 157g c2s paper +4C+embossed+spot UV+ anti-scratch matte lamination +inside 157g c2s paper +4C+ anti-scratch matte lamination + mirror on lid+grey cardboard insert+magnet close



Item NO. : XC-20-J-10
Size : 8*10.5*1.2cm
Process : outer 157g c2s paper +4C+embossed+spot UV+ anti-scratch matte lamination +inside 157g c2s paper +4C+ anti-scratch matte lamination + mirror on lid+grey cardboard insert+magnet close



Item NO. : XC-20-J-11
Size : 7*6*1.3cm
Process : outer 157g c2s paper +4C+embossed+spot UV+ anti-scratch matte lamination +inside 157g c2s paper +4C+ anti-scratch matte lamination + mirror in lid+grey cardboard insert+magnet close



Item NO. : XC-20-K-01

Size : 14*13*1.2cm

Process : Outer 157g c2s paper +4C + anti-scratch matte lamination + inside 157g c2s paper +4C+ anti-scratch matte lamination + mirror on lid+grey cardboard insert+magnet close + (210g c1s paper +4C)



Item NO. : XC-20-K-02

Size : 13.5*12*1.2cm

Process : Outer 157g c2s paper +4C + anti-scratch matte lamination + inside 157g c2s paper +4C+ anti-scratch matte lamination + mirror on lid+grey cardboard insert+magnet close + (210g c1s paper +4C)



Item NO. : XC-20-L-01
Size : 12.5*12.6*1.1cm
Process : Outer 182g holographic paper+4C+white+ dull polish+embossed+inside: 182g holographic paper +4C+ white+ dull polish +mirror in lid+ grey cardboard insert+magnet close



Item NO. : XC-20-L-03
Size : 16.6*12.6*0.8cm
Process: Outer 182g holographic paper+4C+white+ dull polish+embossed+inside: 182g holographic paper +4C+ white+ dull polish + grey cardboard insert+magnet close



Item NO. : XC-20-L-04-A
Size : 15.3*10*1cm
Process : Outer 182g holographic paper+4C+white+ dull polish+embossed+inside: 182g holographic paper +4C+ white+ dull polish +mirror in lid+ grey cardboard insert+magnet close



Item NO. : XC-20-L-04-B
Size : 15.3*10*1cm
Process : Outer 182g holographic paper+4C+white+ dull polish+embossed+inside: 182g holographic paper +4C+ white+ dull polish +mirror in lid+ grey cardboard insert+magnet close



Item NO. : XC-20-L-02
Size : 12.9*11.2*1.8cm
Process : outer 157g c2s paper+4C+hot stamping+embossed+ anti-scratch matte lamination/pearl lamination +inside: 157g c2s paper+4C + anti-scratch matte lamination/pearl lamination + mirror on lid+grey cardboard insert+magnet close



Item NO. : XC-20-L-05-A
Size : 17*11.6*0.7cm Process : outer 157g c2s paper+4C+hot stamping+embossed+ anti-scratch matte lamination/pearl lamination +inside: 157g c2s paper+4C + anti-scratch matte lamination/pearl lamination +grey cardboard insert+magnet close



Item NO. : XC-20-L-05-B
Size : 17*11.6*0.7cm Process : outer 157g c2s paper+4C+hot stamping+embossed+ anti-scratch matte lamination/pearl lamination +inside: 157g c2s paper+4C + anti-scratch matte lamination/pearl lamination +grey cardboard insert+magnet close



Item NO. : XC-20-M-01
Size : 11.6*6.4*1.8cm
Process : Outer 182g
holographic paper +special
lamination+inside: 182g glitter
paper+EVA insert+ special
lamination +magnet+ silk ribbon



Item NO. : XC-20-M-02
Size : 12.4*7.8*1.9cm
Process : Outer 182g
holographic paper +special
lamination+inside: 182g glitter
paper+EVA insert+ special
lamination +magnet+ silk ribbon



Item NO. : XC-20-M-03
Size : 12.8*9.1*2.3cm
Process : Outer 182g
holographic paper +special
lamination+inside: 182g glitter
paper+EVA insert+ special
lamination +magnet+ silk ribbon



Item NO. : XC-20-N-01
Size : 18*4.8*1.5cm
Process : Outer Oter 182g
holographic
paper+4C+white+inside: 182g
holographic paper +4C+
white+mirror on lid+ grey cardboard
insert+magnet close



Item NO. : XC-20-N-02
Size : 18*5.3*1.5cm
Process : Outer Oter 182g
holographic
paper+4C+white+inside: 182g
holographic paper +4C+
white+mirror on lid+ grey cardboard
insert+magnet close



Item NO. : XC-20-N-03
Size : 18*5.8*1.5cm
Process : Outer Oter 182g
holographic
paper+4C+white+inside: 182g
holographic paper +4C+
white+mirror on lid+ grey cardboard
insert+magnet close



Item NO. : XC-20-P-01
Size : 16.5*7.5*1.5cm
Process : Outer 157g c2s paper
+4C + anti-scratch matte lamination
+hot stamping+glitter UV+ spot
velvet+inside 157g c2s paper + anti-
scratch matte lamination + mirror on
lid+grey cardboard insert+magnet
close



Item NO. : XC-20-P-02
Size : 15*6*1.6cm
Process : Outer 157g c2s paper
+4C + anti-scratch matte lamination
+hot stamping+glitter UV+ spot
velvet+inside 157g c2s paper + anti-
scratch matte lamination +grey
cardboard insert+magnet close



Item NO. : XC-20-P-03
Size : 14.2*6*1.4cm
Process : Outer 157g c2s paper
+4C + anti-scratch matte lamination
+hot stamping+glitter UV+ spot
velvet+inside 157g c2s paper + anti-
scratch matte lamination + mirror on
lid+grey cardboard insert+magnet
close



Item NO. : XC-20-P-04
Size : 18*8.8*1.3cm
Process : Outer 157g c2s paper
+4C + anti-scratch matte lamination
+hot stamping+glitter UV+ spot
velvet+inside 157g c2s paper + anti-
scratch matte lamination + mirror in
lid+grey cardboard insert+magnet
close



Item NO. : XC-20-Q-01
Size : 11*17.4*1.5cm
Process : Outer 157g c2s paper +K
+ anti-scratch matte lamination + hot
stamping+embossed+spot
UV+star shape paper card+inside:
K+ anti-scratch matte lamination+
hot stamping +mirror in lid+ grey
cardboard insert+magnet close



Item NO. : XC-20-Q-02
Size : 12.2*19.4*1.5cm
Process : Outer 157g c2s paper +K
+ anti-scratch matte lamination + hot
stamping+embossed+spot
UV+star shape paper card+inside:
K+ anti-scratch matte lamination+
hot stamping +mirror in lid+ grey
cardboard insert+magnet close



Item NO. : XC-20-Q-03
Size : 13.7*21.8*1.5cm
Process : Outer 157g c2s paper +K
+ anti-scratch matte lamination + hot
stamping+embossed+spot
UV+star shape paper card+inside:
K+ anti-scratch matte lamination+
hot stamping +mirror in lid+ grey
cardboard insert+magnet close