



Guangzhou Bozhilin Biological Technology Co.,Ltd



Company Information



ABOUT US

We have best quality product and service for OEM&ODM customers, bulk package raw material

PRODUCTS

We have more than 6000 square meters of standard factory buildings. We have the world-class production, testing equipment and facilities

TEAM

we have a professional R&D engineer team profession in special polymer application research on the basis of new materials.

PROFESSIONAL

We have a very professional show room to display our product and newest items.

Company Files

We are Guangzhou Bozhilin Biological Technology Co.,Ltd specialized in UV GEL POLISH manufacture,since last 5 years already exporeted to oversea marketing!

Good quality for no matter OEM/Wholesale/Salon!

It's organic,no smell,no toxi,no wrinkled,non shrinkage,non break!

We have SGS,MSDS,GMPC certification as guarantee!

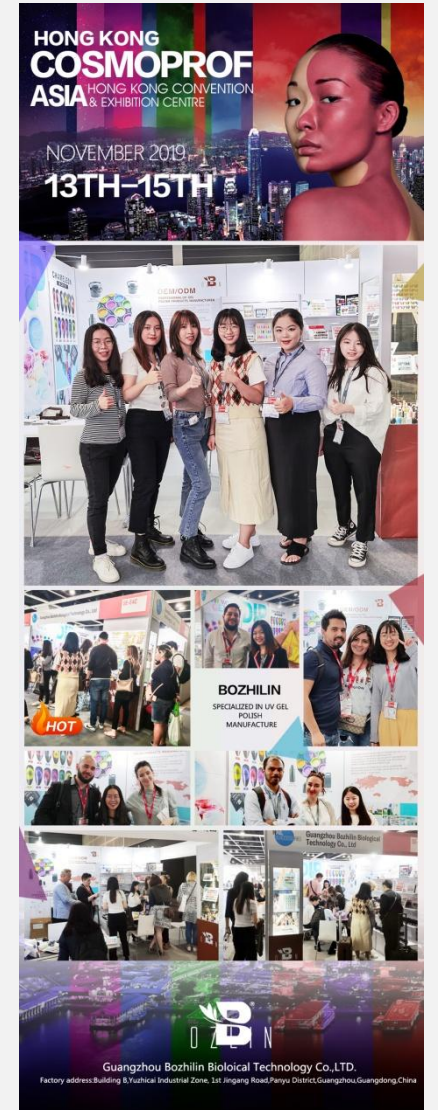
Welcome to quality test!

2019.10 Russia Expo Beauty 2019.11 Hongkong Cosmoprof

2017.3 China Beauty Exhibition



2017.7 Las Vegas Cosmoprof



● 2019 BOZLIN Exhibition

(2019.3 GZ Beauty EXPO)



(2019.3. Italy Bologna Cosmoprof)



(2019.7 Las Vegas Cosmoprof)



(2019.1. Japan beauty Expo)



Product Catalogue

Hot

- ◆ Magic gel
- ◆ 9D cat eye gel
- ◆ Holographic gel
- ◆ Firework gel
- ◆ Colorful Chameleon gel

A

Functional Gel

- ◆ Base coat&Non wipe top coat
- ◆ Base &Top Kit
- ◆ Rubber base&Rubber top
- ◆ Super bright top coat
- ◆ Velvet top&Matte top coat&Color matte top coat
- ◆ Glaze top coat
- ◆ Builder gel&3 in 1 builder gel
- ◆ poly gel/Acryl gel
- ◆ Mood Change Top coat
- ◆ Gel Remover

B

Color Gel series

- ◆ 3 step gel
- ◆ 1 step gel
- ◆ Fur gel
- ◆ Glow in the dark gel
- ◆ Blossom gel/Blooming gel
- ◆ Shell gel
- ◆ Dry flower gel
- ◆ Glitter gel
- ◆ Sugar gel
- ◆ Glaze A+B
- ◆ Holographic gel
- ◆ Magic gel
- ◆ Firework gel
- ◆ Crack gel
- ◆ Soot coloured glaze gel
- ◆ Colorful chamelelon gel
- ◆ Stamping gel
- ◆ Shell gel 2.0
- ◆ Sugar coral gel
- ◆ Water light gel
- ◆ Jelly red gel
- ◆ Hot sale red series
- ◆ Spider gel
- ◆ Coral gel

C

Temperature color changing gel series

- ◆ Temperature color changing gel
- ◆ Color changing top coat

D

3D & 4D emboss gel series

- ◆ Painting gel
- ◆ 3D emboss gel
- ◆ 4D emboss gel/Sculpture gel

E

Super Diamond Gel Glue

F

Cat eye series

- ◆ 5D cat eye gel
- ◆ 3D cat eye gel/cat eye liquid
- ◆ Jewelry cat eye gel
- ◆ Chameleon cat eye gel
- ◆ Glaze cat eye gel
- ◆ Icy Cat eye gel
- ◆ Totoro cat eye gel
- ◆ 9D cat eye gel
- ◆ Christmas red& green cat eye gel

G

Platinum gel series

- ◆ Super platinum gel
- ◆ Star cloud glitter gel
- ◆ Platinum gel
- ◆ Neon gel
- ◆ Super Holo gel
- ◆ Super platinum gel (one coat)
- ◆ Punk gel

OZEN



POLY NAIL GEL
24 Colors



● Poly Gel

Newest Poly Gel can be used as **Builder** or **Painting Gel**



① Using sponge rubbing to polish inside and edge roundly.



② Apply a thin base coat gel, Cure with LED lamp 30s or UV lamp 60s.



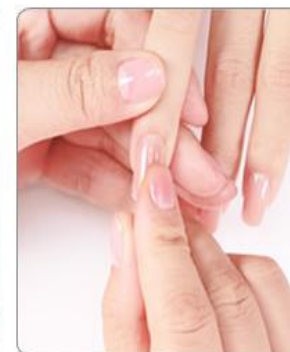
③ Using suitable model of the shape of the hand of nail.



④ Apply adequate amount to the poly gel of the rubber on the nail plate model



⑤ Apply poly gel to nail tips with slip solution.



⑥ Put the poly to your nail. Cure with LED lamp 60s or UV lamp 120s



⑦ Remove the nail plate model after dry, extend a molding.



⑧ Apply a thin top coat gel. Cure with LED lamp 30s or UV lamp 60s.

● 5D Magic Cat Eye Gel



◆ 6 colors

◆ **Step** : Polish your nail → Base coat → Black color gel → Bozlin 5D cat eye gel → Non wipe top coat.



● Magic Box Cat Eye Gel (Pandora cat eye gel)



- ◆ 30 colors
- ◆ **Step** :Base coat→Black color gel(or not)→magic box cat eye gel→Non wipe top coat.)

● Chameleon Aurora Gel



Step:Polish your nail→Base coat→ Normal Black Color
→Chameleon Aurora Gel→Non wipe top coat.



● Super platinum gel



12 colors



◆ The former 6 color are normal viscosity, the latter 6 colors are higher viscosity.

◆ Step: Polish your nail → Base coat → 2 times apply Bozlin super platinum gel → Non wipe top coat (Super shiny platinum nail art done!)



NEW ARRIVAL-Metallic Gel

Mirror Effect Gel & Metal silver Color



RED SERIES COLORS
Christmas Red - Happy Christmas



A01 A02 A03 A04 A05 A06

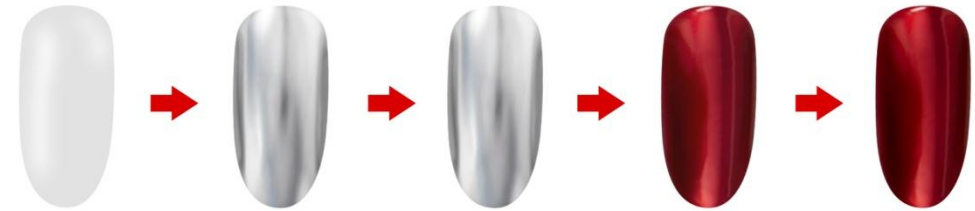
MATAL Color Chart Amazing 12 colors



01 02 03 04 05 06
07 08 09 10 11 12

● Metallic silver Mirror Gel

Operation procedure



1

Apply Base
coat

2

Metallic gel-Silver
(dry by air 15s and
then LED Lamp
30s/UV lamp 60s)

3

Metallic prosthetic gel
(cure the lamp)

4

Any Colorful- Glass
gel brush just 1 time
(LED Lamp 30s
/UV lamp 60s)

5

Top coat
(LED Lamp 30s
/UV lamp 60s)



More 80 glaze mirror colors please ask for us.

Functional Gel

We think our Bozlin product can give you an edge over competitors, we can make sure good quality! no smell, no toxic, no wrinkled, non shrinkage, non break, short curing time.



- Base coat & Top coat

● Base&Top kit



We are Bozlin Nails bring
you the Base coat&Top
coat kit making
combining your nail color
to fashion style an easy
task!



● Rubber base&Rubber top

- ◆ Rubber base:Mainly as a base. More natural,sticky, flexible than usual base coat.
- ◆ Rubber top:used as non wipe top coat, more natural,sticky,flexible than usual non wipe top coat.Stick gemstone, decorations.



DIFFERENCE BETWEEN SUPER BRIGHT TOP COAT AND NORMAL TOP COAT

NORMAL TOP COAT

SUPER BRIGHT TOP COAT

SCRATCH RESISTANCE
SUPER BRIGHTNESS
SUPER PROTECTION



● Super Bright Non Wipe Top Coat

For Children world, Superman is amazing!
For Nail art world, Super no wipe top coat is amazing!

How is amazing: Super Bright no wipe top coat are Super Brightness, Super Protection, Scratch Resistance.

How is amazing: Super Bright no wipe top coat won't be afraid of knife or fork.

How is amazing: Super Bright no wipe top coat's brightness lasts for two months.



- **Rubber matte top(clear)**

Color:clear

Step:base coat→color gel→velvet top

Velvet top is different from matte top,it's top has a velvet effect and feeling soft when you touch it.

Velvet top also making combining your nail color to fashion style an easy task!

- **Matte top(clear)**

- The difference between no wipe top coat and matte top coat. It's organic, no smell, no toxic, non shrinkage, non break! Welcome to test good quality.



No wipe top coat



Matt top coat



● Color Matte Top Coat

Step :Polish your nail→Base coat→Apply Bozlin Color matte top coat make your beautiful nail art→Perfect done(no need any non wipe top coat)

Easy way to apply!

● Glaze Top Coat



- ◆ Widest 20 colors for you to choose. It's beautiful colorful top coat, The effect looks like a clear glaze.
- ◆ **Step:** Polish your nail → Base coat → Apply BOZLIN glaze top coat (Perfect done!)

● Builder Gel



5 features:

- ◆ NO: 1 Strong nails
(After applying color, using builder gel can make nail stronger)
- ◆ NO: 2 Extend real nail
(With the paper tray can make short nails longer and more real)
- ◆ NO: 3-4 Stick gemstone, decorations
(With Builder gel stick gemstone&decorations, very strong, not yellow)
- ◆ NO: 5 soak off, not hurt nails
(Use remover and steel push can be removed)

Color Gel series

We have widest **800+ colors** of 3 step gel for you to choose,whatever pure color or sparkled color,a right color always waiting for you!



We can make the colors you are looking for,we think what you need and do it!

3 STEP GEL

● One Step Gel



ONE STEP UV GEL

206 colors for you to choose.

Step: Apply Bozlin 1 step gel directly (No need base coat & non wipe top coat)

Easy apply & Easy soak off



● Fur Gel

◆ 24 colors

◆ **Step** :Polish your nail→Base coat→2 times apply
Bozlin fur gel→Non wipe top coat.



● Glow in The Dark Gel



◆ **Step:** Polish your nail → Base coat → Apply Bozlin 3 step gel as base → Apply Bozlin glow in the dark gel → Non wipe top coat.

◆ **Step:** Polish your nail → Base coat → 2 times apply Bozlin glow in the dark gel → Non wipe top coat.

● Blossom Gel

Blossom Gel

- 3 COLORS (CLEAR WHITE BLACK) -



Application OF Clear Blossom Gel



1. Apply the normal base coat and cure it



2. Apply the color base coat(Black, Red, Blue etc. Any color you like) and cure, then apply the blossom clear gel, **but do not cure**



3. Use dot pen to draw it, hold on for a while, the color gel will be blossoming, you can wait till the pattern as you like, then cure it



4. apply the top coat and cure

● Shell Gel



◆ **Step** :Polish your nail→Base coat→2 times apply Bozlin
Shell gel nail art→Non wipe top coat.

● Glitter Gel



Step: Polish your nail→Base coat→ BOZLIN glitter gel→ Non wipe top coat.

● Star Cloud Glitter Gel



- ◆ 8 colors
- ◆ **Step:** Polish your nail → Base coat → Black color gel → 2 times apply Bozlin Glitter gel (design your nail art) → Non wipe top coat.

Bozlin • Make the Color More Wonderful

12 Shinning Color Platinum Adhesive



◆ 12 colors

◆ **Step:** Polish your nail → Base coat → 2 times apply Bozlin platinum gel (design your nail art) → Non wipe top coat.

● Platinum Gel



● Neon Gel



◆ **Step:** Polish your nail → Base coat → 2 times apply Bozlin Neon gel (design your nail art) → Non wipe top coat.

Temperature color changing gel series



● Temperature Color Changing Gel

◆ **NOTE:**When above 30℃ ,the original color changes to light color;When below 30℃ , the original changes to dark color.

◆ **Step :**Polish your nail→Base coat→2 times apply Bozlin Temperature color changing gel→Non wipe top coat.

● Temperature Non-Wipe Top Coat



◆ **NOTE:** When above 30℃, the original color changes to light color; When below 30℃, the original changes to dark color.

◆ **Step :** Polish your nail → Base coat → apply Bozlin color changing top coat (Perfect done)

3D & 4D emboss gel series

● Painting Gel

- ◆ 75 colors
- ◆ Step :Polish your nail→Base coat→Use Bozlin painting gel design nail→top coat.
- ◆ Bozlin nail will help you win the first marketing.





12 pcs/set



● 3D Emboss Gel



- ◆ 12 Sweet colors
- ◆ **Step:** Polish your nail → Base coat → Apply BOZLIN 3d emboss gel (design your nail art) → Non wipe top coat.



- ✓ No adhesive to hand
- ✓ No sharp odor
- ✓ No deformation

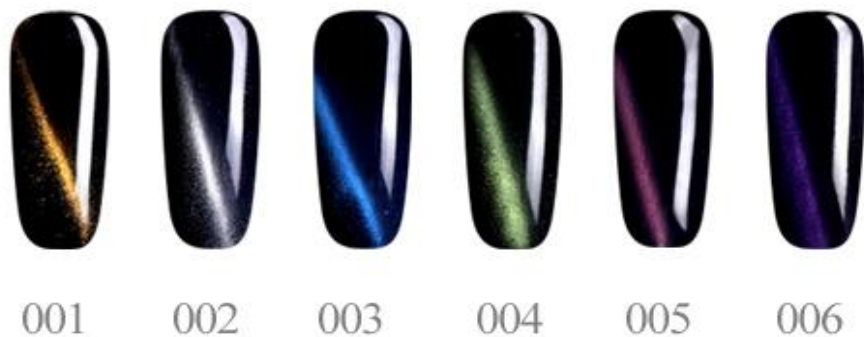


● 4D Emboss Gel

- ◆ 12 Sweet colors
- ◆ Step: Polish your nail → Base coat → Apply BOZLIN 4d emboss gel (design your nail art) → Non wipe top coat.



● 3D Cat Eye Gel



•**Warm tip:** Use little powerful magnet close to chameleon cat eye gel with the distance of 0.5cm angle, tilt 45 degrees, stay 5-6 seconds immediately curing under the LED lamp, then perfect work!

CAT EYAS OPERATION GUIDE

FASHION



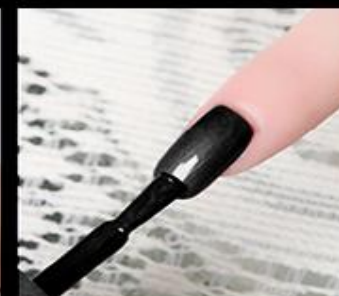
STEP 1
Polish the face, clean
grease and dirt



STEP 2
Apply base coat



STEP 3
UV/LED lamp, cure
30-60 seconds



STEP 4
apply black color gel
polish, and cure lamp
30-60 seconds



STEP 5
apply cat eye liquid
use the Magnet to
make cat eye effect



STEP 6
Cure lamp 30-60S



STEP 7
apply top coat & cure
lamp, perfect effect!



Perfect work

Soak-Off UV Gel Polish By Bozlin

NEW ARRIVAL JEWELRY CAT EYES GEL

With Diamond Colors
Powder Glitter Nail Art
LED UV Nail Gel Polish 12 Colors



- * High Quality
- * Beautiful colors
- * Popular at home and abroad

● Jewelry Cat Eye Gel (12 colors)

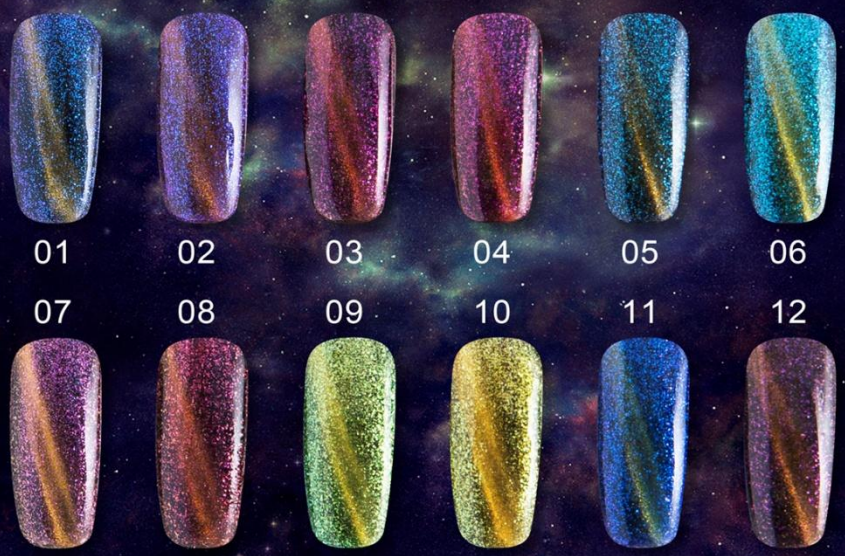
◆ **Warm tip:** Use little powerful magnet close to chameleon cat eye gel with the distance of 0.5cm angle, tilt 45 degrees, stay 5-6 seconds immediately curing under the LED lamp, then perfect work!

◆ **Step :** Polish your nail → Base coat → 2 times apply Bozlin Jewelry cat eye gel → Non wipe top coat.

● Chameleon Cat Eye Gel

Warm tip: Use little powerful magnet close to chameleon cat eye gel with the distance of 0.5cm angle, tilt 45 degrees, stay 5-6 seconds immediately curing under the LED lamp, then perfect work!

OZEN
Chameleon-Cat-Eyes



CAT EYAS OPERATION GUIDE

FASHION



STEP 1
Polish the face, clean grease and dirt



STEP 2
Apply base coat



STEP 3
UV/LED lamp, cure 30-60 seconds



STEP 4
apply cateye gel



STEP 5
use the magnet to make cat eye effect



STEP 6
Cure lamp 30-60S



STEP 7
apply top coat & cure lamp, perfect effect!



Perfect work

GLAZE CAT EYE GEL



WITH IT, YOU'RE THE QUEEN OF FASHION.



Warm tip: Use little powerful magnet close to chameleon cat eye gel with the distance of 0.5cm angle, tilt 45 degrees, stay 5-6 seconds immediately curing under the LED lamp, then perfect work!

● Glaze Cat Eye Gel

CAT EYAS OPERATION GUIDE

FASHION



STEP 1

Polish the face, clean grease and dirt



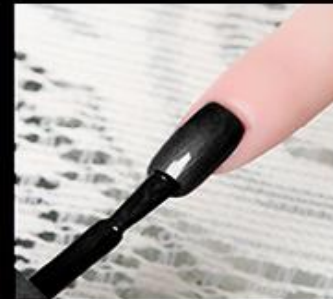
STEP 2

Apply base coat



STEP 3

UV/LED lamp, cute 30-60 seconds



STEP 4

apply black color gel polish, and cute lamp 30-60 seconds



STEP 5

apply cat eye liquid use the Magnet to make cat eye effect



STEP 6

Cute lamp 30-60S



STEP 7

appy top coat & cute lamp, perfect effect!



Perfect work

Fashionable Bottles Choice:



- ✓ Order 1000pcs, we make your own sticker label for free cost!
- ✓ Also welcome to OEM your own bottle!

- We factory offer OEM & ODM service, we can help you to make your own brand!

Our Services

SERVICE OEM/ODM

BULK PACKAGE RAW MATERIAL

1. Nail gel polish can be sold without brand
2. Nail gel polish can be sold in barrel as 1kg, 5kg, 10kg
3. We can help to do your own brand
4. OEM colors and OEM package
5. New Brand establish insistence
6. Sample fee: sample fee is free, shipping cost paid by customer, and the shipping cost will be refunded when mass order confirmed
7. Wholeheartedly for you to solve any problem



Barrel
Volume:1Kg



With the handle barrel
Volume:20Kg



Bottled
Volume:1Kg



With the mouth bottled
Volume:250g



Jug
Volume:5Kg



● Certificate Show:

We have
GMP,SGS,MSDS,FDA,CO,Alibaba
Assessed Supplier license. We can
support customer necessary required
document !



Guangzhou Bozhilin Biological Technology Co.,Ltd



Factory Address:

Building B, Yuzhical Industrial Zone, 1st Jingang Road, Panyu District, Guangzhou, Guangdong, China

www.gzbozhilin.com www.gzbozhilin.en.alibaba.com

About us


Guangzhou Bozhilin Biological Technology Co., LTD



Factory: Building B, Yuzhicai Industrial Zone, 1st Jingang Road, Panyu District, Guangzhou, Guangdong;

Showroom Address: 128 Number, 12 Building, 1st Phase, Xingfa Square, Airport Road, Baiyu District, Guangzhou, Guangdong, China

Website: www.gzbozlin.com
<http://gzbozlin.en.alibaba.com>

Tel: 86-020-22295304





**THANKS FOR YOUR
ATTENTION!**

