
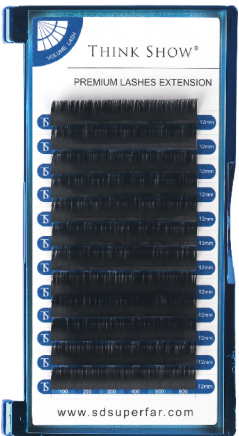
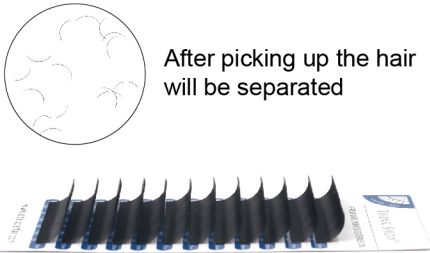








<p><b>Volume Eyelash Extension</b></p>		<p>Thickness : 0.03 , 0.05 , 0.07</p> <p>Curls : J , B , C , CC , D , DD , U+ , L , LC , LD</p>
	 <p>After picking up the hair will be separated</p>	<p>Length : 6 ~ 20mm</p>
<p><b>Classic Eyelash Extension</b></p>		<p>Thickness : 0.10 , 0.12 , 0.15 , 0.18 , 0.20 , 0.25</p> <p>Curls : J , B , C , CC , D , DD , U+ , L , LC , LD</p>
		<p>Length : 6 ~ 20mm</p>
<p><b>Auto / Easy / Rapid Fan Eyelash Extension</b></p>		<p>Thickness : 0.03 , 0.05 , 0.07 , 0.10 , 0.12 , 0.15 , 0.18 , 0.20 , 0.25</p> <p>Curls : J , B , C , CC , D , U , U+ , L , LC , LD</p>
		<p>Length : 6 ~ 20mm</p>

### Faux Mink Eyelash Extension



Thickness : 0.03 , 0.05 , 0.07 , 0.10 , 0.12 , 0.15 , 0.18 , 0.20 , 0.25

Curls : J , B , C , CC , D , DD , U+ , L , LC , LD

Length : 6 ~ 20mm



### Mink Eyelash Extension

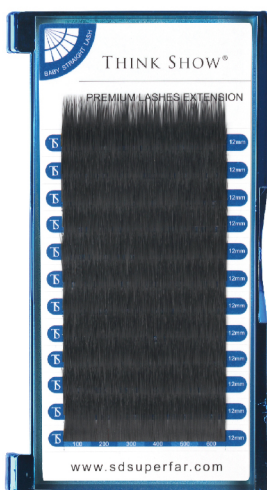


Curls : J , B , C , CC , D , DD , U+

Length : 8 ~ 15mm

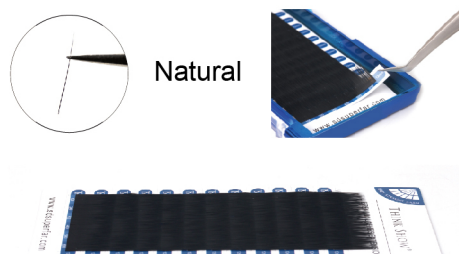


### Baby Straight Eyelash Extension

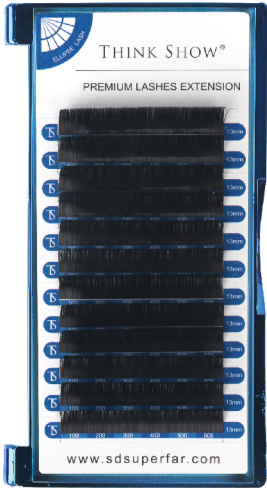


Thickness : 0.03 , 0.05 , 0.07 , 0.10 , 0.12 , 0.15 , 0.18 , 0.20 , 0.25

Length : 6 ~ 20mm



Ellipse / Flat Eyelash Extension

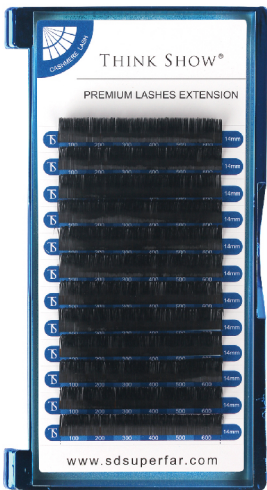


Thickness : 0.10 , 0.12 , 0.15 , 0.20

Curls : J , B , C , CC , D , DD , U+

Length : 6 ~ 20mm

Cashmere Eyelash Extension

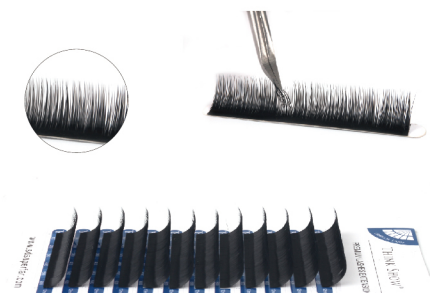


Thickness : 0.10 , 0.15 , 0.18 , 0.20 , 0.25

Curls : J , B , C , CC , D , DD , U+

Length : 6 ~ 20mm

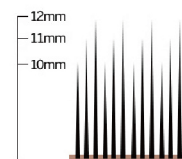
Camellia Eyelash Extension



Thickness : 0.03 , 0.05 , 0.07 , 0.10 , 0.12 , 0.15 , 0.18 , 0.20 , 0.25

Curls : J , B , C , CC , D , U , U+ , L , LC , LD

Length :



## Rainbow Eyelash Extension



Thickness : 0.03 , 0.05 , 0.07 , 0.10 , 0.12 , 0.15 , 0.18 , 0.20 , 0.25

Curls : J , B , C , CC , D , DD , U , U+ , L , LC , LD

Length : 6 ~ 20mm



0.07 Thickness Color :



0.10 Thickness Color :



## Ombre Eyelash Extension A



Thickness : 0.03 , 0.05 , 0.07 , 0.10 , 0.12 , 0.15 , 0.18 , 0.20 , 0.25

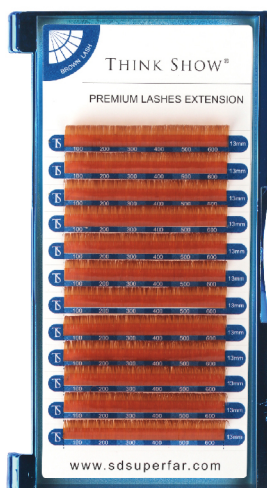
Curls : J , B , C , CC , D , DD , U+ , L , LC , LD

Length : 6 ~ 20mm



Color : Yellow Black , Red Black , Blue Black , Green Black , Purple Black

## Brown Eyelash Extension



Thickness : 0.03 , 0.05 , 0.07 , 0.10 , 0.12 , 0.15 , 0.18 , 0.20 , 0.25

Curls : J , B , C , CC , D , DD , U , U+ , L , LC , LD

Length : 6 ~ 20mm



Color : Dark Brown , Brown

**Colorful Eyelash Extension**



Thickness : 0.03 , 0.05 , 0.07 , 0.10 , 0.12 , 0.15 , 0.18 , 0.20 , 0.25

Curls : J , B , C , CC , D , DD , U , U+ , L , LC , LD

Length : 6 ~ 20mm



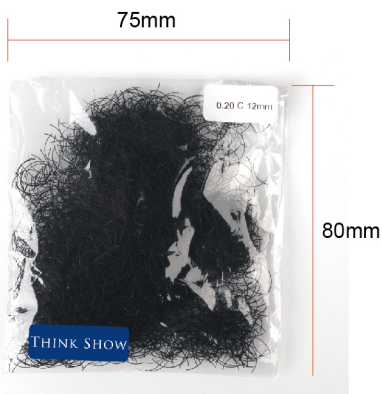
0.07 Thickness Color :



0.10 Thickness Color :



**Bulk Extension In Bag**



Thickness : 0.03 , 0.05 , 0.07 , 0.10 , 0.12 , 0.15 , 0.18 , 0.20 , 0.25

Curls : J , B , C , CC , D , DD , U+ , L , LC , LD

Length : 6 ~ 20mm

3 g / pack



**Bulk Extension In Case**



Thickness : 0.03 , 0.05 , 0.07 , 0.10 , 0.12 , 0.15 , 0.18 , 0.20 , 0.25

Curls : J , B , C , CC , D , DD , U+ , L , LC , LD

Length : 6 ~ 20mm

customize the lash case based on your lash quantity and weight





青岛广超发进出口有限公司

— Qingdao Super Far Import & Export Co.,Ltd —