



ACE-TEC CO., LTD.  
420 Jinxing Road, Xixi Industrial Zone,  
Liaobu Town Dongguan City, Guangdong  
Province, China  
T : +86 769 8301 4680  
E : sales@acetinobeauty.com  
www.ace-tec.cn

ACE-TEC  
S M A R T B E A U T Y

ODM EXPERT OF  
HOME BEAUTY DEVICE

## PRODUCT CATEGORIES

### FACIAL CLEANSING

SR-02C	P06
SR-02E	P07
SR-02G	P08
SR-02K	P09
SR-03A	P10
SR-03G	P11
SR-03H	P12
SR-03L	P13
SR-03K	P14
FCA2	P15

### BODY SLIMMING

SR-07B	P18
SR-07D	P19
SR-12B	P20
SR-12D	P21
SR-12G	P22
SR-12H	P23
HM-02	P24
HM-03	P25

### BEAUTY CARE

SR-06A	P28
SR-06BI	P29
SR-06C	P30
SR-07A	P31
SR-08A	P32
SR-09A	P33
SR-09B	P34
SR-09C	P35
SR-10BR	P36
SR-11A	P37
SR-11C	P38
SR-14A	P39
SR-17A	P40
SR-19B	P41

# ABOUT ACE-TEC

OVER 16 YEARS FOCUS ON OEM & ODM OF BEAUTY CARE DEVICES



Dongguan Ace-Tec Co.,Ltd was established in the year of 2003. We are the professional manufacturer specializing in beauty care products. The facility covers a working area of more than 20,000 square meters with over 800 employees. With a talented and experienced R&D team (30 professionals) , we have acquired more than 100 independent intellectual patents. Great importance is attached to high-tech and innovations on new products to meet or exceed our customers' expectations.



## GLOBAL MARKET



Provide ODM & OEM service to over 100 customers worldwide, especially some prestige international brands of beauty care devices and home appliances.

## FACIAL CLEANSING

Clean Face and Body in Different but Soft Ways.



## Sonic Facial Brush

MODEL NO.  
**SR-02C**

### FEATURES

- Silicon brush head for deep cleaning.
- Sensitive brush for delicate areas around eyes.
- Face sponge to use with facial creams to improve hydration.
- Cradle for easy storage.

### SPECIFICATION

Waterproof : IPX4  
 Material : ABS  
 Unit Dimension : 149 x 80x40 mm  
 Unit Weight : 40g  
 Setting : 2 speeds control  
 Power : 1.5V, 1pc battery  
 Motor : 6,600rpm±15%  
 Selectable Accessories : Silicon brushes, Face sponge,  
 Sensitive brush, Cradle



## Sonic Facial Brush

MODEL NO.  
**SR-02E**

### FEATURES

- The Wave Cleanser cleans deeply to remove make-up, oil and day-to-day grime, leaving your skin intensely cleansed as you've never felt before.
- Specially designed wrinkle reducer applicator provides enough soft and firm massage to eye area, activating blood flow and making skin cells more active for a less wrinkle.

### SPECIFICATION

Waterproof : IPX4  
 Material : ABS  
 Unit Dimension : 168 x 55x55 mm  
 Unit Weight : 110g  
 Setting : 2 speeds control  
 Power : 3.0V, 2pcs AA batteries  
 Motor : 4,700rpm  
 Selectable Accessories : Various brushes, Wrinkle Reducer, Face  
 Sponge, Various Massager head



## Wave Cleanser

### FEATURES

- The Wave Cleanser cleans deeply to remove make-up, oil and day-to-day grime, leaving your skin intensely cleansed like you've never felt before.
- Your skin will feel softer and firm massage to eye area, activating blood flow and making skin cell more active for a less wrinkle.

### SPECIFICATION

Waterproof : IPX4

Material : ABS

Unit Dimension : 172 x 85x74 mm

Unit Weight : 115g

Setting : 2 speeds control

Power : 3.0V, 2pcs AA batteries

Motor : 260 type, 4,700rpm(high), 3500rpm(low)

Selectable Accessories : Various brushes, Wrinkle Reducer,

Face Sponge, Various Massager head

MODEL NO.  
**SR-02G**



## Sonic Facial Cleansing Brush

### FEATURES

- Mushroom cute ID design, extremely attract to ladies.
- Skin touch soft silicone coat to make it high end feeling.
- Clean deeply to remove make-up, oil and day grime, leaving your skin intensely cleansed like you've never felt before.
- 2 levels of vibration speed adjustable.
- Silicone brush can help to activate blood flow and making skin cell more active for a less wrinkle.

### SPECIFICATION

Waterproof : IPX4

Material : ABS

Unit Dimension : 68.17X68.17X67.14mm

Unit Weight : 100g

Motor : 6,200rpm(high), 5,600rpm (low)

Material : soft silicone

Charging : 1.5- 2 hours fast charging ( USB cable)

Selectable Accessories : Sensitive brush ,Normal brush,

Silicone brush ,Brush cover

MODEL NO.  
**SR-02K**



## Face & Body Cleansing Kit

### FEATURES

- Micro-Dermabrasion.Refine your skin with deep exfoliation and help improve skin imperfections such as fine lines,sun damage,ageing or blemished skin.You will reveal healthier skin.
- Different brush heads for all over face and body cleansing.
- Water-resistant design,anti-slippery soft handle,convenient for usage at bath room.

### SPECIFICATION

Waterproof : IPX4  
 Material : PP for handle + TPR for soft grip  
 Unit Dimension : 176.5x76x47mm  
 Unit Weight : 128g  
 Motor : 8000 rpm  
 Setting : 2 speeds control  
 Power : 6.0V, 4pcs AA batteries  
 Accessories : Face brush, Body brush, Face sponge, Pumice

MODEL NO.  
**SR-03A**



## Face & Body Cleansing Kit

### FEATURES

- Micro-Dermabrasion.Refine your skin with deep exfoliation and help improve skin imperfections such as fine lines,sun damage,ageing or blemished skin.You will reveal healthier skin.
- Different brush heads for all over face and body cleansing.
- 2 levels of rotation speed adjustable.
- Water-resistant design,anti-slippery soft handle,convenient for usage at bath room.

### SPECIFICATION

Waterproof : IPX4  
 Material : PP for handle + TPR for soft grip  
 Unit Dimension : 174 x 83 x 43 mm  
 Unit Weight : 128g  
 Motor : 8000 rpm  
 Setting : 2 speeds control  
 Power : 6 .0V, 4pcs AA batteries  
 Accessories : Face brush, Body brush, Face sponge, Pumice

MODEL NO.  
**SR-03G**



## Mini Face Cleansing Kit

MODEL NO.  
**SR-03H**

### FEATURES

- Waterproof, free for usage in shower room.
- Two directions rotation, to provide always up-lifting movement.
- Soft tapping to increase blood circulation.
- Two speeds, fit for both sensitive and regular skin.
- Dry battery as power for free usage at travel.

### SPECIFICATION

Waterproof : IPX4  
 Material : ABS  
 Unit Dimension : 135 x 80 x 45 mm  
 Unit Weight : 85 g  
 Motor : 8000 rpm  
 Setting : 2 speeds control  
 Power : 3 .0V, 2pcs AA batteries  
 Rotary Way : clockwise & anti-clockwise  
 Selectable Accessories : Sensitive Brush,Regular Brush, Face Sponge



## Wireless Charging Oscilation Brush

MODEL NO.  
**SR-03L**

### FEATURES

- High frequency of sonic motion, to thoroughly clean skin while extremely soft, no hurt to skin.
- Smart reminding to next position, auto power off at 60s, low battery indication available.
- With 3pcs of uv light (415nm) sterilizing working around cradle when start charging the unit.
- Mini egg shape ID design plus colored painting for case, fit for high-end market.

### SPECIFICATION

Waterproof : IPX7  
 Material : ABS  
 Unit Dimension : 65x65mm  
 Unit Weight : 100g  
 Charging Time : less than 6hours  
 Battery Type : Built - in Rechargeable Lithium Battery  
 Charging : Induction charging with USB cable(wireless)



## Inductive Rechargeable Facial Brush

MODEL NO.  
**SR-03K**

### FEATURES

- Waterproof, free for usage in shower or bath tub.
- Two directions rotation, to provide always up-lifting movement.
- Soft tapping to increase blood circulation.
- Two speeds, fit for both sensitive and regular skin.
- Wireless charging, more clean and clear design.

### SPECIFICATION

Waterproof : IPX7, for bath room  
Unit Dimension : 170 x 86 x 45 mm  
Unit Weight : 185 g  
Usage after Charging : over 30 minutes  
Adaptor : Universal 100-240VAC 50/60Hz  
Auto Power Off : 3 minutes  
Speed : 2 speeds control  
Rotation Selection : Clockwise & Anti-clockwise  
Selectable Accessories : Sensitive brush, Brush Cradle



## Wireless Rechargeable Facial Brush

MODEL NO.  
**FCA2**

### FEATURES

- Optional silicone or nylon brush, cleanse skin while softly massage.
- 2 levels of high frequency oscillation, more efficient to clean the skin.
- Auto power off at 3 minutes, intelligent and energy saving.
- Inductive wireless charging, simple but elegant design.
- IPX 7 waterproof, use freely during shower.

### SPECIFICATION

Waterproof : IPX7  
Material : ABS  
Unit Dimension : 60x71x36mm  
Unit Weight : 106g  
Charging Time : less than 6 hours  
Charging : Induction charging with USB cable(wireless)  
Selectable Accessories : Silicon brush,Regular Brush



## BEAUTY CARE

Firmer, brighter, smoother and anti-aging.  
Powerful devices for your skin beauty.



## Ultrasound Lead In Device

### FEATURES

- Stimulate blood circulation and increase production of collagen.
- Enhance skin care product performance.
- Tighten and tone neck, body and facial skin.
- Diminish wrinkles and fine lines.
- Fade scars, freckles, redness and age spots.

### SPECIFICATION

Waterproof : IPX 7  
 Frequency : 5Mhz,5 million stimulations to skin per second  
 Power : rechargeable battery  
 Charging : 2-hours fast charging  
 Material : ABS & PC  
 Unit Dimension : 48x44x166mm  
 Unit Weight : 180g  
 Charging Adaptor : universal type,fit for AC 100-240V,50-60Hz

MODEL NO.  
**SR-06A**



## Ultrasound Facelifting Device

### FEATURES

- Slim and Elegant design, easy for holding.
- Cordless with built-in rechargeable battery.
- 2-in-1 functions fit for more applications.

**Positive Ion(+)** efficiently clean pore, preparing for further skin care treatment.

**Negative Ion(-)** efficiently penetrate skin care cream , essence into skin.

### SPECIFICATION

Waterproof : NOT  
 Ultrasound Frequency : 5Mhz,5 million stimulations to skin per second  
 Ion : 0V ~ 5.0V for Ion (+); 0V ~ -5.0V for Ion (-)  
 Main Case : ABS  
 Unit Dimension : 41x39x128mm  
 Unit Weight : 86g  
 Power : built-in rechargeable battery  
 Charging : 2-4 hours fast charging  
 Charging Adapter : universal type,fit for AC 100-240V,50-60Hz

MODEL NO.  
**SR-06BI**



## Anti-wrinkle Eye Massager

### FEATURES

- Streamline product image,cute and easy for holding.
- Positive Ion(+), efficiently clean pore,preparing for further skin care treatment.
- Negative Ion(-), efficiently penerate eye care cream/essence into skin.
- Photon Light,Red, increase collagen production,making skin more firm and upwards.
- Photon Light,Blue, efficiently anti-bacterium to reveal fresh and smooth skin.
- High frequence vibration, 200 massages to skin per second.
- Soft vibrating wave, efficiently massage around eye area to improve blood circulation,and help eye care cream / essence's penetration.

### SPECIFICATION

Dimension : 131.7x24x24mm

Unit Weight : 42.5g with battery installed

Main Case ABS : with pearl white painting

Settings : Positive Ion (+) with Photon (Blue, 415nm) and Vibration  
Negative Ion (-) with Photon (Red, 660nm) and Vibration

Auto Power off : 3 minutes

Power : 1.5V , 1pc AA battery

MODEL NO.  
**SR-06C**



## Wrinkle Reducer

### FEATURES

- It produces a physiological change in the connective tissue, reconditioning deep layers of face skin & neck where topical solutions are unable to be tone and firm.
- Strengthen the connective tissue fibers with gentle skin exercise. It rejuvenates blood circulations, helping to nourish and oxygenate tissues, hydrating them to give your skin a renewed luster, tightened and youthful appearance.

### SPECIFICATION

Waterproof : NOT

Material : ABS for main unit & TPR for sucking cup

Unit Dimension : 165.5 x 55x94mm

Unit Weight : 166g

Noise level : < 65dB

Power : 3.0V,2pcs AA batteries

Accessory : Sucking cup

MODEL NO.  
**SR-07A**



## EMS Face Lifter

MODEL NO.  
**SR-08A**

### FEATURES

- EMS, deepen muscle activation and improve cell activity for less wrinkle.
- A group of Ti-coated SUS balls, manifest face massage and lifting provided by salon.
- Waterproof design, free for usage in shower.

### SPECIFICATION

Waterproof : IPX4

Material : ABS

Unit Dimension : 135 x 67x40mm

Unit Weight : 149g (approximate)

Setting : 3 speeds control

Charging Time : 2-2.5 hours

Auto Power Off : 10 minutes

Usage After Full Charge: 120 minutes



## Acne Care

MODEL NO.  
**SR-09A**

### FEATURES

- LED Light technology targets the bacteria causing acne getting to the core of the breakout.
- The precise heat probe helps to open the blocked pore and assists any built up waste to expel with ease.
- Help to prevent scarring and pigmentation caused by damage.
- 100% natural and recommended by dermatologists.
- Safe, effective and affordable.

### SPECIFICATION

Waterproof : NOT

Temperature : around 42 °C, or 107 °F

Blue Wavelength: 415nm

Main Case : ABS with pearl white painting

Unit Dimension : 155x26x20mm

Unit Weight : 75g

Main Case : ABS for main unit

Power : 1.5V, 1pc AA battery



## Mini Rechargeable Acne Care

MODEL NO.  
**SR-09B**

### FEATURES

- 415nm blue LED kills acne-causing bacteria to reduce breakouts, and reduces the size of sebaceous glands.
- The precise heat probe helps to open the blocked pore and assists any built up waste to expel with ease.
- Help to prevent scarring and pigmentation caused by damage.
- 100% natural and recommended by dermatologists.
- Safe, effective and affordable.

### SPECIFICATION

Waterproof : NOT  
Temperature : around 42 °C, or 107 °F  
Blue Wavelength: 415nm  
Main Case : ABS with colored painting  
Unit Dimension : 24 x 95mm  
Unit Weight : 55g  
Vibration : Optional  
Power : Built-in rechargeable battery  
Usage Time After full charge: 150 minutes  
Charging : Use the USB cable or with a detachable adapter charging



## RF&LED light Acne Treatment

MODEL NO.  
**SR-09C**

### FEATURES

- 415nm blue LED kills acne-causing bacteria to reduce breakouts, and reduces the size of sebaceous glands.
- Radio frequency is applied to open the blocked pore by generating heat and improve acne & acne scars by shrinking sebaceous glands.
- Impulse vibration massages the skin and helps LED and heat to penetrate deep layer of skin, fasten the heal of acne.
- Precise and automatic temperature control, more safe and easier to cure acne.

### SPECIFICATION

Waterproof : NOT  
Temperature : around 42-50 °C  
Blue Wavelength: 415nm  
Vibration : ON 0.5S OFF 0.5S  
Main Case : ABS  
Unit Dimension : 25.2×103.6 mm  
Unit Weight : 52g  
Usage Time : ≥30 min  
Charging Time : 2-2.5 hours  
Charging : Use the USB cable or with a detachable adapter charging



## Nano Mist Spray

## FEATURES

- Effective atomization providing tiny enough water mist, penetrating into basal cell layer of skin.
- Soften skin by continuous mist supply to ensure more efficient absorption of various skin care lotion.
- Leakproof and compact design make, it safe and portable.
- LED indication making the unit more outstanding and elegant.

## SPECIFICATION

Power Consumption : 650mA

Tank Capacity : 6.5ml

Mist Amount : 0.8ml / min

Unit Dimension : 41x39x128mm

Auto Power off : 30 seconds

LED Indication : Low battery

Unit Size : 25.8x26x107.5mm

Unit Weight : 58.8g

Charging : Use the USB cable or with a detachable adapter charging

Power : Built in rechargeable battery ( Dry battery version is optional )

MODEL NO.  
**SR-10BR**



COLORS     

## Powerful LED Therapy

## FEATURES

- **Infrared and Red light:** Increases collagen production fivefold in the skin, triggering repair mechanisms and stimulating fibroblast cells and cell growth.
- **Blue:** Improves acne prone skin with its purifying and anti-bacterial properties. It effectively reduces the amount of fluid in the face and treats sensitive skin to provide a clear complexion.
- **Green:** Reduces pigmentation through penetration into base skin layers. Prevents the formation of fleck, gravid and aging pigment to keep skin smooth and bright.

## SPECIFICATION

Waterproof : NOT

Unit Size : 178x52x57mm

Unit Weight : 106g

LED Quantity : 33pcs on each panel

LED Wavelength : Infrared(850nm) & Red (660nm).

Blue(415nm) & Green (525nm).

Power : Universal charger(AC 100-240V,50-60Hz)

Optional Accessory: Eye-Shade.

MODEL NO.  
**SR-11A**



# Skin Rejuvenation Face Mask

MODEL NO.  
**SR-11C**

## FEATURES

- Red light, increasing collagen, for wrinkle reduction.
  - Blue light, killing bacterium, for acne treatment.
  - Yellow light, removing pigmentation, for more bright skin.
- 2 versions LED combination: Yellow+Red for bright skin.  
Blue+Red for Acne treatment.
- Mask shape and hand-free power, free your hands during treatment.
  - Compact controller with LED display providing easy control.

## SPECIFICATION

Rechargeable Battery : Li-ion battery  
Unit Dimension : 240x180x110mm  
Available Wavelength : 670nm for RED, 415nm for BLUE  
and 600nm for Yellow  
Quantity of LEDs Applied: 120pcs bi-colour light  
Auto-Off : 15 minutes  
Charging Time : 3-5 hours fast charging  
Accessories : controller and charger  
Flashing Frequency : 0.8s ON and 0.2s OFF



# Ultrasound Aroma Diffuser

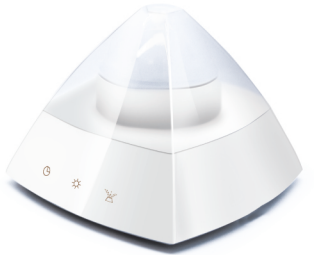
MODEL NO.  
**SR-14A**

## FEATURES

- Super high frequency of ultrasound wave, strong enough to diffuse any water-based or oily aroma.
- No heat used, best way to keep aroma's element, for better body care.
- Low-water auto-off, protecting the unit from getting damaged.
- Hidden touch panel, more clean clear image, appealing high end market.
- USB power supply, convenient for office people.
- 3 selectable mist frequency.
- 3 selectable LED background.

## SPECIFICATION

Ultrasound Frequency: 4.5Mhz  
Product Dimension : 133 x 133 x 98mm  
Product Weight : 294g, without water  
LED Background : 4 selection, Red, Blue, Purple or No color  
Mist Modes : 3 settings with different mist frequency  
Power : 5V, 500mA, by USB or power adaptor



# Nano Care Facial Steamer

MODEL NO.  
**SR-17A**

## FEATURES

- Nano steam, deeply penetrate into the outer layer of skin.
- Adjustable mist direction, providing more freedom on usage.
- Detachable water tank, making it easy for water filling.
- Mirror panel installed on top surface, for you to check skin condition during steaming.
- Built-in carry belt, easy for grasping and carrying during transportation.
- Precious temperature controlling, open and clean closed pores.
- Rich in negative ions for fully enjoy.

## SPECIFICATION

Unit Dimension : 180x108x155 mm  
Material : ABS  
Tank Capacity : 70ml  
Unit Weight : roughly 525g  
Mist Temperature : around 43 °C  
Spray - Head : adjustable  
Steam Volume : 390ML / H



# Rolling Nail Polisher

MODEL NO.  
**SR-19B**

## FEATURES

- IPX4 which is convenient for cleansing it even with water after usage.
- Various applicators can be selectable, can full meet with your kinds of requirement purpose.
- 2 speeds setting at low & High and 2 rolling direction setting at Right & left conform to your established conventions.
- Protective wall design with device to preven the nails droplets run around.

## SPECIFICATION

Waterproof : IPX 4  
Unit dimension : 159 x 36.5 x 28 mm  
Unit weight : 93g  
Power : 2pcs AA Alkline battery,3.0V  
Material : ABS  
Speed : 2 setting,low and High.  
Rolling direction : 2 setting, left and Right.  
Selectable Accessories : Nail trimmer seaming spool (Grit:#400)  
Finer polisher seaming spool (Grit:#1,200)  
Finest polisher seaming spool (Grit:#3,000)  
Pedicure roller (Grit:#60)  
Pedicure roller (Grit:#100)



## BODY SLIMMING

Body Roller & Massager Bring Health SPA Home.



## EMS&LIPO Anti-Cellulite Massager

MODEL NO.  
**SR-07B**

### FEATURES

- EMS make deep muscle activation, for the effective cellulite reducing and making skin firming.
- Suction cup with silicon roller massager, continuously grasp and massage LIPO to remove fat.

### SPECIFICATION

Material : ABS  
Unit Dimension : 154 x 63 x 62 mm  
Unit Weight: 180g  
Power : 3W, under charging  
Charging Time : 2-3 hours.  
Accessories : Charging Stand ,  
AC adaptor (DC5.0V/0.5A),  
Big cup , Small cup, Tweezer



## EMS& LIPO Face Rejuvenator

MODEL NO.  
**SR-07D**

### FEATURES

- EMS make deep muscle activation, for the effective cellulite reducing and making skin firming.
- Suction cup with silicon roller massager, continuously grasp and massage LIPO to remove fat.

### SPECIFICATION

Material : ABS  
Unit Dimension : 110 x 66 x 100 mm  
Unit Weight : 197g  
Power : Around 3W, under charging  
Charging Time : Around 2-3 hours.



# Multi-Function Anti-Cellulite Massager

MODEL NO.  
**SR-12B**

## FEATURES

- 3D roller, offer you comfortable and professional experience.
- High speed rotation, stimulate muscle movment and fasten blood circulation.
- 2 levels of power adjustable, anti-cellulite and firmer the skin.
- Ball roller and wheel roller are available for different parts of body use

## SPECIFICATION

Waterproof : NOT  
Material : ABS for main unit  
Unit Dimension : 137 x 85 x 85 mm  
Unit Weight : 310g  
Motor : 8000rpm  
Level setting : low and high  
Gear Box : metal type for quiet usage  
Power Supply : AC adaptor, AC 100-240V, 50-60Hz



# Rechargeable 4D Body Massager

MODEL NO.  
**SR-12D**

## FEATURES

- 4D rollers offer more strong power to skin.
- IPX7 waterproof, free for usage in bathroom.
- Rechargeable battery.
- Two rotation directions available, clockwise and anti-clockwise for better application.
- Quality metal gear box and more HIGH SPEED motor used.
- Massaging available while charging, free usage without waiting time.

## SPECIFICATION

Waterproof : IPX7  
Material : ABS for main unit  
Level Setting : low and high  
Dimension : 136x54x64mm  
Unit Weight : 300g  
Auto Power Off : 15 minutes  
Power : built-in rechargeable battery  
Charging : 2-4 hour fast charging  
Power Supply : 100-240V, 50-60Hz.  
Accessories : 4D Body Roller, 4D face Roller



## Anti-Cellulite Body Roller

MODEL NO.  
**SR-12G**

### FEATURES

- 3D Silicon wheel rollers, soft and comfortable but strong enough.
- Ergonomic handle design, easy to grasp while massaging.
- 2 levels of power adjustable, anti-cellulite and firm the skin.

### SPECIFICATION

Waterproof: NOT  
Material : ABS  
Unit Dimension : 172 x 85x74 mm  
Unit Weight: 115g  
Motor : 8000rpm  
Level Setting : 2 speeds control  
Power Supply : 3.0V, 2pcs AA batteries  
Rotary Direction : clockwise & anti-clockwise



## Dual Rolling Massager

MODEL NO.  
**SR-12H**

### FEATURES

- Dual-attachment, with adjustable angel of 100 degree, 120 degree and 140 degree.
- 2 rollers rotate with opposite direction to each other and those 2 rollers can shift exact rotation direction adjusted by SHIFT button.
- Hand grip made in silicon material to have soft feeling.
- Specially designed with Mesh Cover throughout can help pave the way for a more comfortable and more pleasurable experience.
- With over-loading current limit protection for each speed.

### SPECIFICATION

Waterproof : NOT  
Material: ABS  
Unit Dimension : 238 x 110x100mm  
Unit Weight : 512g  
Level Setting : 3 speeds control  
Power Supply : AC 100V-240V, 50-60Hz  
Auto Power Off : 10 minutes  
Rotation : Clockwise and anti-clockwise selectable  
Accessories : 2pcs of body rollers



## Bionic Head Massager

MODEL NO.  
**HM-02**

### FEATURES

- Deep scalp cleaning

The four fingers will squeeze out the sebum inside the pores , and the little bump in the middle will scrape the dirt.

Approx. 43,200 rotation per minute(240 bumps x 180 rotations per min)

- Face lifting up

The Massaging attachment is designed with shape to manifest human fingers in order to give an aesthetic treatment to release the tense in the scalp.

When used on face, it will lift up the eye area, mouth, and forehead.

- Relaxing Massage

Also to be used on shoulders and neck for relaxing massage.

### SPECIFICATION

Waterproof : IPX 7, free for usage in shower

Rechargeable : Yes, Li-ion Battery

Unit Dimension : 130 x 70 x 83 mm

Unit Weight : 227g

Charging Time : 2-3 hours fast charging

Usage After Charging : 30 minutes

Auto Power Off : 5 minutes

Selectable Accessories : Scalp cleansing attachment

Face massaging attachment



## Bionic Head Massager

MODEL NO.  
**HM-03**

### FEATURES

- Deep scalp cleaning

The six fingers will squeeze out the sebum inside the pores, and the little bump in the middle will scrape the dirt.

- Face lifting up

The Massage attachment is designed with shape to manifest human fingers in order to give an aesthetic treatment to release the tense in the head. When used on face, it will lift up the eye area, mouth, and forehead.

- Relaxing Massage

The soft fingers can also do massage on face, head and body, take you into a relaxing dream to relieve all of the tired.

### SPECIFICATION

Waterproof : IPX7

Material: ABS

Unit Dimension : 97 x 105 x 103 mm

Unit Weight : 287g

Level Setting : 2 speeds control

Power Supply : 5.0VDC 500mA

Charging Time : 1.5-3 hours

Auto Power Off : 5 minutes

