



OUR COMPANY

Located in Guangzhou city, Guangdong Province, mainland, China, Guangzhou Queen Hair Products Co., Ltd. is specialized in the design and manufacture of human hair extensions, especially in Brazilian, Peruvian, Malaysian, European virgin hair and lace closures. With over 8 years experience in hair products, we have already established a close relationship with retailers, wholesalers as well as business agents throughout the USA, the UK, Canada, South Africa and many European countries in the world.

FACILITY AND SUPPLY

In order to manufacture high-quality hair extensions, we have built our own factory and selected great quality human hair from the temples around the world. Experts in hair weaving are enrolled to produce the hair as well. Every month, our factory can supply over 100,000 kgs of hair extensions to fulfill the needs and demands of our customers. With high-tech equipments to test the quality and experienced hair-weavers to produce our products, our quality maintains in a stable way. Good quality and best service help us achieve our business goals, appreciation and approvals from our customers worldwide.

MAIN GOALS AND CUSTOMERS SATISFACTION

To create more beauty products, maintain high-quality hair extensions and update not only our products but ourselves so as to keep us ahead of the world, and the last but most vital one: to make every client satisfied with everything we offer and to grow stronger together. To be the real queen, starts here!





Even now, Ali queen hair has become the unique human hair brands on ali express, even in China. Have office space more than 1000 m², the most professional sales team members of more than 30 person, and the most conscientious Aftermarket logistics team of more than 20 people. We cooperating with dozens of high quality raw material factory, become a collection of r & d, design, custom, production and processing as one of the industry and trade integrated enterprise.







PRODUCT INTRODUCTION



SEXY BODY WAVE

SOFT AND SHINY, BOUNCY TEXTURE,
SEXIEST & WILDEST LOOKING





HUMAN HAIR WEFT

Length:	8"~40"
Weight:	About 100g/pc (3.2oz-3.5oz/pc)
Hair Color:	Natural color #1b, #2, #4, All can be dyed or bleached.
Available Type:	Brazilian, Peruvian, Malaysian, Indian, Burmese and European etc.,

Length:	8"~20"
Lace Size:	4" x 4"
Weight:	About 30g-35g/pc
Lace Color:	Medium brown
Part Design:	Free part/ Middle part/ Three part
Type:	Lace closure or Silk base closure
Hair Color:	Natural color #1b, All can be dyed or bleached.
Available Type:	Brazilian, Peruvian, Malaysian, Indian, Burmese and European etc.,

TOP CLOSURE





HUMAN HAIR WIGS

Length:	8"~26"
Lace Color:	Medium brown
Density:	About 130% density
Weight:	About 100g-230g/pc
Type:	Full Lace Wig or Lace Front Wig
Hair Color:	Natural color #1b, All can be dyed or bleached.
Available Type:	Brazilian, Peruvian, Malaysian, Indian, Burmese and European etc.,
Cap:	Swiss lace with comb

Length:	8"~20"
Lace Size:	13" x 4"
Weight:	About 95g-100g/pc
Lace Color:	Medium brown
Type:	Lace frontal
Hair Color:	Natural color #1b, All can be dyed or bleached.
Available Type:	Brazilian, Peruvian, Malaysian, Indian, Burmese and European etc.,

LACE FRONTAL





HUMAN HAIR WEFT

Length:	8"~40"
Weight:	About 100g/pc (3.2oz-3.5oz/pc)
Hair Color:	Natural color #1b, #2, #4, All can be dyed or bleached.
Available Type:	Brazilian, Peruvian, Malaysian, Indian, Burmese and European etc.,

Length:	8"~20"
Lace Size:	4" x 4"
Weight:	About 30g-35g/pc
Lace Color:	Medium brown
Part Design:	Free part/ Middle part/ Three part
Type:	Lace closure or Silk base closure
Hair Color:	Natural color #1b, All can be dyed or bleached.
Available Type:	Brazilian, Peruvian, Malaysian, Indian, Burmese and European etc.,

TOP CLOSURE





HUMAN HAIR WIGS ^

Length:	8"~26"
Lace Color:	Medium brown
Density:	About 130% density
Weight:	About 100g-230g/pc
Type:	Full Lace Wig or Lace Front Wig
Hair Color:	Natural color #1b, All can be dyed or bleached.
Available Type:	Brazilian, Peruvian, Malaysian, Indian, Burmese and European etc.,
Cap:	Swiss lace with comb

Length:	8"~20"
Lace Size:	13" x 4"
Weight:	About 95g-100g/pc
Lace Color:	Medium brown
Type:	Lace frontal
Hair Color:	Natural color #1b, All can be dyed or bleached.
Available Type:	Brazilian, Peruvian, Malaysian, Indian, Burmese and European etc.,

LACE FRONTAL v





HUMAN HAIR WEFT

Length:	12"~32"
Weight:	About 100g/pc (3.2oz-3.5oz/pc)
Hair Color:	Natural color #1b, #2, #4, All can be dyed or bleached.
Available Type:	Brazilian, Peruvian, Malaysian, Indian, Burmese and European etc.,

Length:	8"~20"
Lace Size:	4" x 4"
Weight:	About 30g-35g/pc
Lace Color:	Medium brown
Part Design:	Free part/ Middle part/ Three part
Type:	Lace closure or Silk base closure
Hair Color:	Natural color #1b, All can be dyed or bleached.
Available Type:	Brazilian, Peruvian, Malaysian, Indian, Burmese and European etc.,

TOP CLOSURE





HUMAN HAIR WIGS

Length:	8"~26"
Lace Color:	Medium brown
Density:	About 130% density
Weight:	About 100g-230g/pc
Type:	Full Lace Wig or Lace Front Wig
Hair Color:	Natural color #1b, All can be dyed or bleached.
Available Type:	Brazilian, Peruvian, Malaysian, Indian, Burmese and European etc.,
Cap:	Swiss lace with comb

Length:	8"~20"
Lace Size:	13" x 4"
Weight:	About 95g-100g/pc
Lace Color:	Medium brown
Type:	Lace frontal
Hair Color:	Natural color #1b, All can be dyed or bleached.
Available Type:	Brazilian, Peruvian, Malaysian, Indian, Burmese and European etc.,

LACE FRONTAL





BOUNCY NATURAL WAVE

FULL CUTICLE, FULL OF BRIGHTNESS,
LOVEY TEXTURE





◀ HUMAN HAIR WEFT

Length:	8"~34"
Weight:	About 100g/pc (3.2oz-3.5oz/pc)
Hair Color:	Natural color #1b, #2, #4, All can be dyed or bleached.
Available Type:	Brazilian, Peruvian, Malaysian, Indian, Burmese and European etc.,

TOP CLOSURE ▶

Length:	8"~20"
Lace Size:	4" x 4"
Weight:	About 30g-35g/pc
Lace Color:	Medium brown
Part Design:	Free part/ Middle part
Type:	Lace closure or Silk base closure
Hair Color:	Natural color #1b, All can be dyed or bleached.
Available Type:	Brazilian, Peruvian, Malaysian, Indian, Burmese and European etc.,



◀ LACE FRONTAL

Length:	8"~20"
Lace Size:	13" x 4"
Weight:	About 95g-100g/pc
Lace Color:	Medium brown
Type:	Lace frontal
Hair Color:	Natural color #1b, All can be dyed or bleached.
Available Type:	Brazilian, Peruvian, Malaysian, Indian, Burmese and European etc.,



◀ HUMAN HAIR WEFT

Length:	10"~30"
Weight:	About 100g/pc (3.2oz-3.5oz/pc)
Hair Color:	Natural color #1b, #2, #4, All can be dyed or bleached.
Available Type:	Brazilian, Peruvian, Malaysian, Indian, Burmese and European etc.,

TOP CLOSURE ▶

Length:	8"~20"
Lace Size:	4" x 4"
Weight:	About 30g-35g/pc
Lace Color:	Medium brown
Part Design:	Free part/ Middle part/ Three part
Type:	Lace closure or Silk base closure
Hair Color:	Natural color #1b, All can be dyed or bleached.
Available Type:	Brazilian, Peruvian, Malaysian, Indian, Burmese and European etc.,



◀ HUMAN HAIR WIGS

Length:	8"~26"
Lace Color:	Medium brown
Density:	About 130% density
Weight:	About 100g-230g/pc
Type:	Full Lace Wig or Lace Front Wig
Hair Color:	Natural color #1b, All can be dyed or bleached
Available Type:	Brazilian, Peruvian, Malaysian, Indian, Burmese and European etc.,
Cap:	Swiss lace with comb

7A GRADE MINK HAIR (✓)

Length:	14"~24"	Texture:	Straight, Body wave , can customize.
Weight:	About 100g/pc (3.2oz-3.5oz/pc)	Hair Color:	Natural color #1b, #2, #4, All can be dyed or bleached.
Available Type:	Brazilian, Peruvian, Malaysian, Indian, Burmese and European etc.,		



COLOR HAIR (✓)

Length:	14"~26"	Texture:	Straight, body wave etc.,
Weight:	About 100g/pc (3.2oz-3.5oz/pc)	Hair Color:	#613,#27,#4 etc., all the color can customize
Available Type:	Brazilian, Peruvian, Malaysian, Indian, Burmese and European etc.,		



OMBRE HAIR

Length:	14"~24"	Texture:	Straight, Body wave, Wavy , can customize.
Weight:	About 100g/pc (3.2oz-3.5oz/pc)	Hair Color:	3 tone, 2 tone color, All can be dyed or bleached.
Available Type:	Brazilian, Peruvian, Malaysian, Indian, Burmese and European etc.,		





#1



#1B



#2



#3



#4



#6



#8



#10



#12



#14



#16



#18



#20



#22



#24



#27



#30



#33



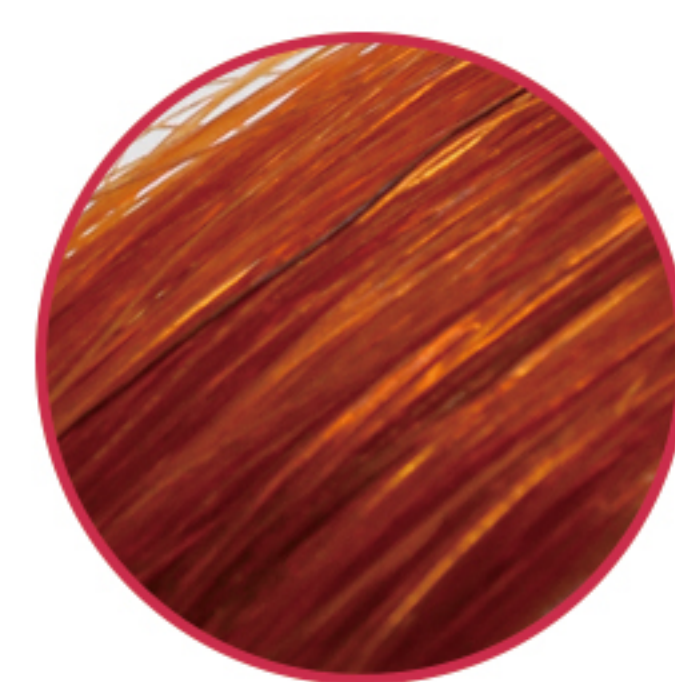
#60



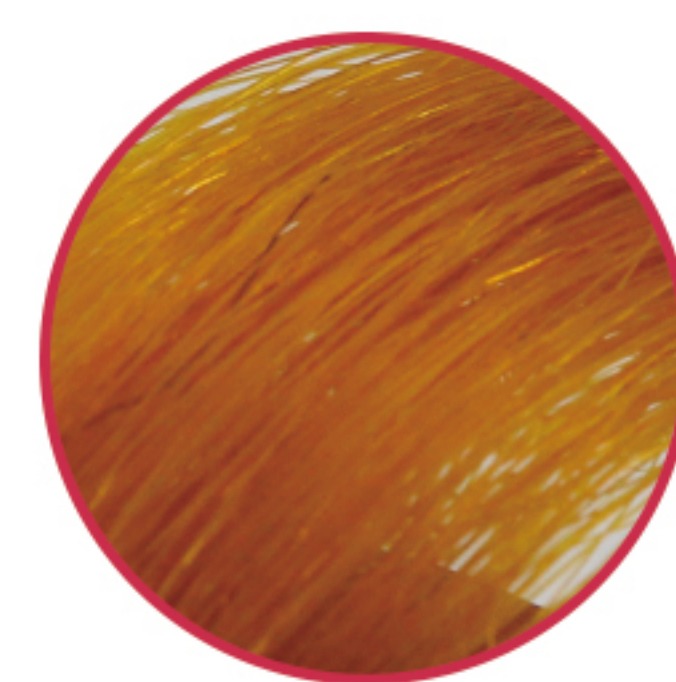
#613



#120



#130



#144



#350



#99J



#530



#RED



#ORANGE



#YELLOW



#GREEN



#BLUE



#BURG



#PURPLE



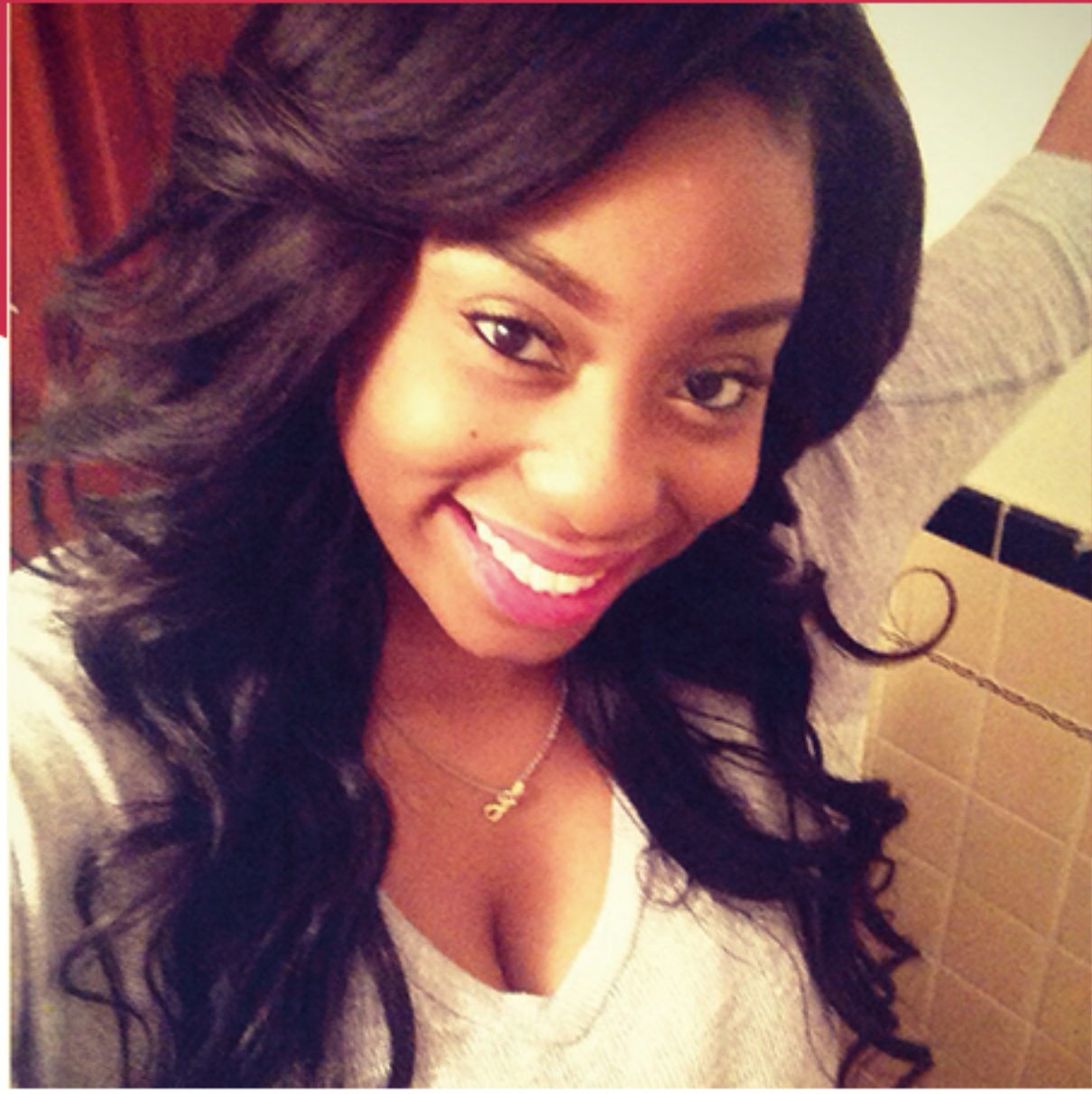
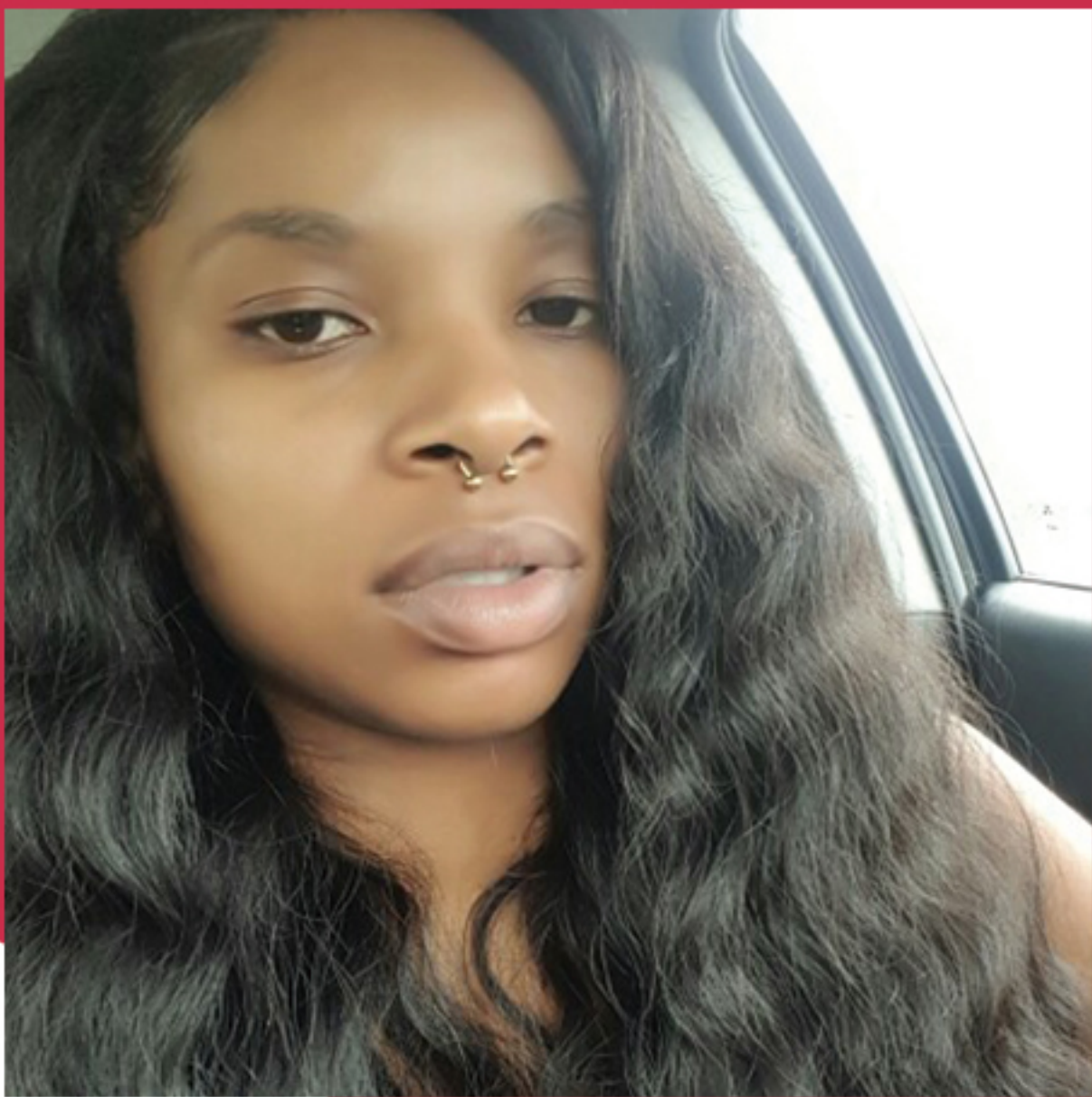
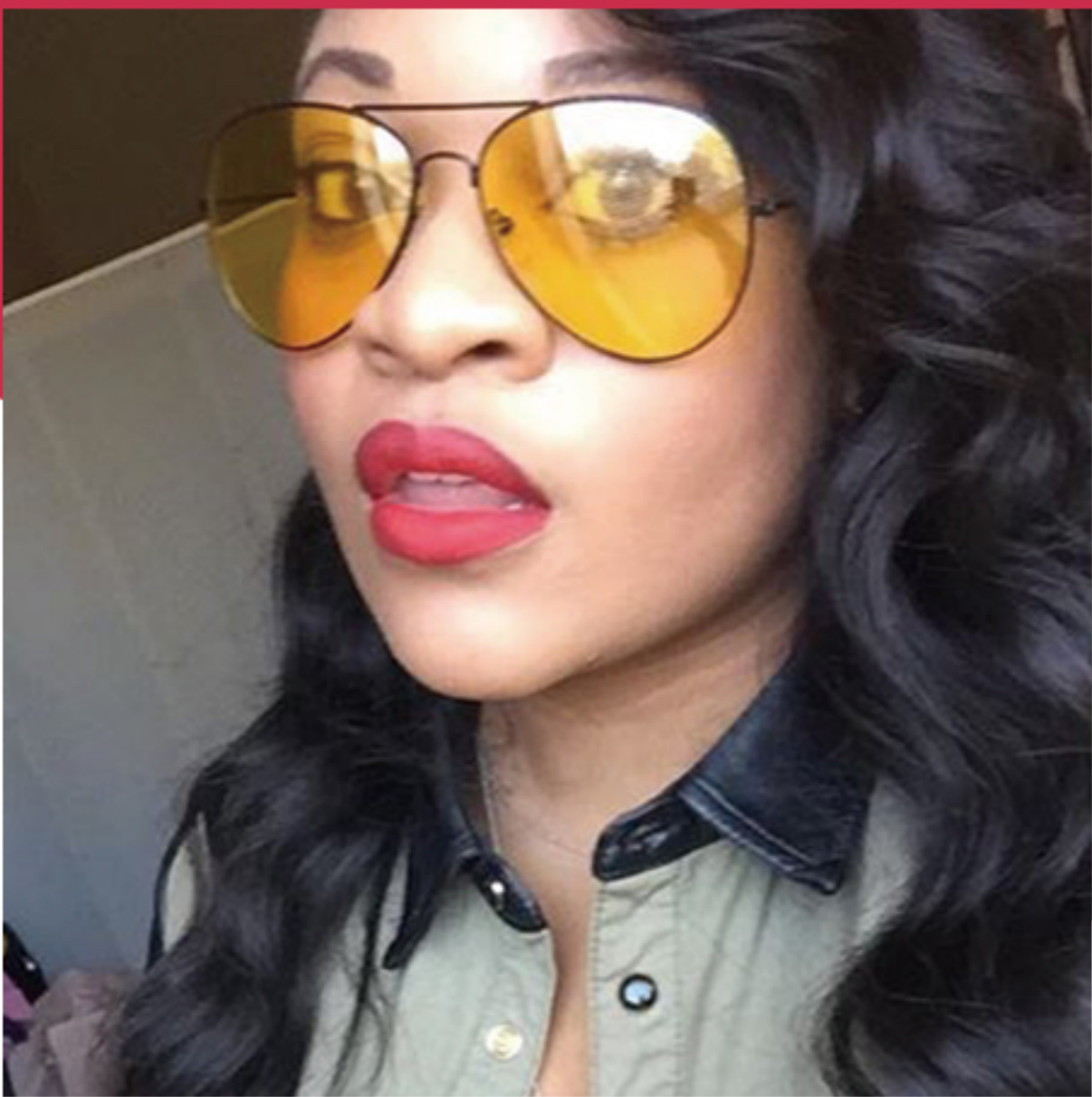
#FUCHSIA



#PINK



BUYERS SHOW





**YOUR BEAUTY
IS OUR GLORY**



86-020-26298476



juan397720974@gmail.com



Room B13044, No.222 Guang Yuan West Road , Long Tou Market,
Guangzhou Guangdong, China