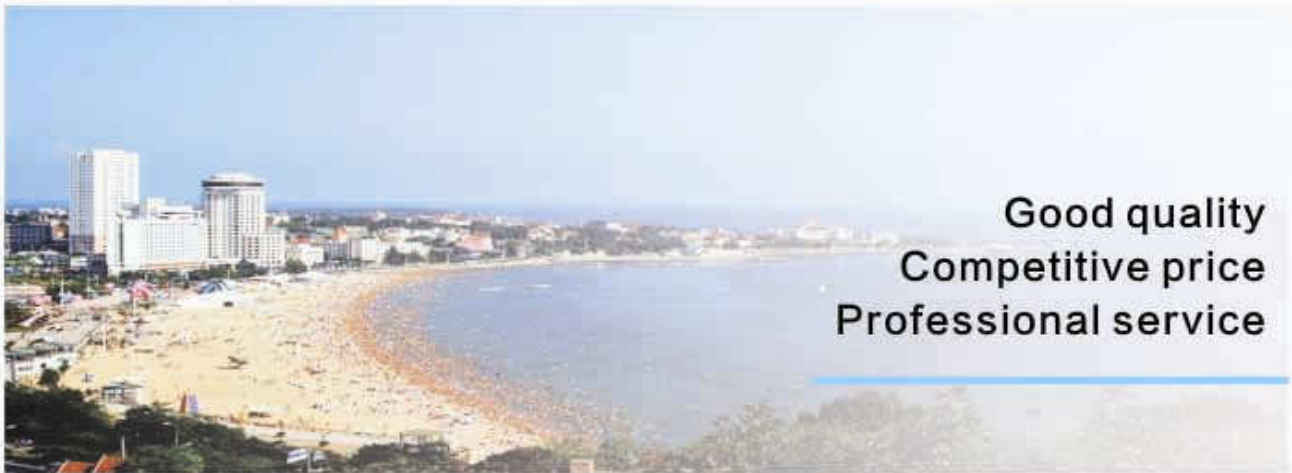


Hair replacement Wig Hair extension...



青岛荣天工艺品有限公司

Qingdao Hair Nature Arts & Crafts Co.,Ltd



Hair Nature is a well established factory mainly for Hair Replacement, Wig and Hair Extension. We are a team of skilled professionals. Continuous training keeps us on top of technique and trend in this hair beauty industry.

ALL DESIGNS AND MATERIALS ARE AVAILABLE:Silk top,French/Swiss lace,Super Injection lace/skin,Silicone,etc. IF YOU CAN DESIGN IT,WE CAN MAKE IT.

Our hair allows you to do any activity you like. Besides natural looking and natural acting hair, it retains the style you want. It's undetectable, easier to care for and measures up to your lifestyle 24 hours a day.

We understand,receiving order made correctly THE FIRST TIME—with high quality materials, quick production,attention to details,are the important considerations.These are EXACTLY what we provide you! Most of your units will be accepted & appreciated,reorders will be plentiful and problems are few.

We even keep more than 15000 units for immediate shipment .That covers hair replacement, lace wig and hair extension.Our big stock will make your business act efficiently and order volume increase a lot. For custom orders,turn around is MUCH quicker:7-8 weeks' standard production time and rush order only take 4-5 weeks!

NO MORE WHISPERING DOWN THE LANE.

Many buyers are dealing solely with us for quite some time.
Why not try a better supplier?





Main building for Hair Replacement



Wig and Hair Extension's production

Satisfactory importer





WE KEEP POPULAR MODELS IN REGULAR STOCK.
10000+ UNITS READY FOR IMMEDIATE SHIPMENT.

Mirage



HAIR TEXTURE

100% Euro-Touch human hair
Available in all natural colors with
different grey percentage
Human base color, grey is synthetic
except 65% or more, where Yak is used

HAIR DENSITY, HAIR STYLE, WAVE AND LENGTH

Hair length 6"
Free style
Medium Light, 100%
28mm wave

BASE DESIGN AND SIZE

5 mil polypaper throughout with cut
away extension
Base size 7 3/4"x9 3/4"
Can be cut down to any size
Front 1/8" V-injected hairline
creating the most natural hairline
Micro-knot the rest of graft

APPLICATION

1. Full head bond
2. Daily dabber for one to several days
3. Perimeter bond not suggested

HELPFUL HINTS

Disposable program client will
need three to four systems per year
Hair adds not recommended





NG(Next Generation skin) is comprised solely of a micro thin layer that, when secured takes over where nature left off. So thin there is no definition between the client's natural hair and where the base begins. Clients can expect up to six to twelve hair replacements per year.

NG



SPECIFICATIONS

BASE-Base Size 7 3/4" × 9 3/4"

Micro thin skin all over
extended skin front without hair
V-looped throughout

HAIR TYPE-human hair,grey is synthetic
except 65% or more,where Yak is used

LENGTH-6"

WAVE PATTERN-Slight wave(30mm)

DENSITY-Light to Medium light,90%

STYLE-Free style





ALL NATURAL COLORS ARE AVAILABLE.
SIZE IS BIG TO CUT AWAY, REALLY "ONE FIT ALL".
RECEIVING IN HAND WITHIN 2-3 BUSINESS DAYS.

French Lace/Swiss Lace



HAIR TEXTURE

100% Euro-Touch human hair
Available in all natural colors with
different grey percentage
Human base color, synthetic or
human gray(65%+)

HAIR DENSITY, HAIR STYLE, WAVE AND LENGTH

Hair length 6"
Free style
French Lace: Medium Light, 100%
Swiss Lace: Light to Medium Light, 90%
30mm wave

BASE DESIGN AND SIZE

All French Lace or All Swiss Lace
Base size 7 3/4"x9 3/4"
Can be cut down to accommodate
any size

BLEACH KNOTS

All knots bleached well
Front A contour

APPLICATION

1. Full head bond
2. Daily dabber for one to several days
3. Perimeter bond not suggested

HELPFUL HINTS

Disposable program client will
need three to four systems per year
Hair adds not recommended



Bella is constructed with an all French lace base with an extended French lace front that incorporates colorless knotting. Large 2" skin in back and 1 1/4" skin sides allow for easy perimeter cutting and bonding. Clients can expect 3 to 6 hair replacements per year.

Bella



SPECIFICATIONS

BASE-Base Size 7 3/4"×9 3/4"

can be cut down for customization.

BLEACH KNOT in front 1/2 for dark colors

HAIR TYPE-human hair, grey is synthetic

except 65% or more, where Yak is used

LENGTH-6"

WAVE PATTERN-Slight wave(30mm)

DENSITY-Medium light, 100%

STYLE-Free style





Hair quality is always the first concern of every wearer
 Indian Remy Hair is the best possible choice now
 The hair remains superior even after many months' use
 That is what we use for this Apollo model

The center of Apollo is Fine Mono
 It not only ensures the durability, but also makes the base breathable
 Wide Poly with gauze is used in perimeter
 It makes the bonding area strong enough, and not so thick
 Front scallops hide the connection area and create undetectable hairline
 This model is designed as a good balance of natural appearance and durability

Apollo



BASE SPECIFICATIONS:

Fine Mono center 3"x3.5"

Wide Poly with gauze in perimeter, designed to be cut down

2" in front, 2.5" in temples, 3.5" in sides, 4" in back

SIZE:

8"x10", can be cut down to many options

HAIR SPECIFICATIONS:

Type: 6" Human Hair, grey is synthetic, except 65%+, where human grey is used

Wave Pattern: Natural Straight

Density: Medium Light to Medium, 120%

Style: Free Style



COLOR SPECIFICATIONS:

#1	#2	#4	#550S
#1B	#210S	#410S	#565H
#1B10S	#220S	#420S	#6
#1B20S	#240S	#440S	#7
#1B40S	#3	#5	#17
#1B50S	#310S	#510S	#18
#1B65H	#320S	#520S	#20
#1B80H	#340S	#540S	#22R



Our skilled professionals have done whatever we can to improve the quality
 Perfect hair process, Good knotting, Superior workmanship, attention to all details, etc
 What else can we do to change and improve?
 The left possibility is Hair Itself: Good Raw Hair!

This Virgins Selection is using Indian Virgin Remy Hair
 We take the maximum advantage and make the hair in natural color
 It is the real virgin remy hair and with cuticles on
 The hair is healthy and can shine beautifully in sunlight

Virgins

SIZE:

8"x10", can be cut down to many options

COLOR:

At present, we only keep the natural color in stock, which is dark brown
 It is the original color of Indian Virgin Remy Hair, and can be easily dyed into
 any color

HAIR SPECIFICATIONS:

Wave Pattern: Natural Straight

Type: Indian Virgin Remy Hair, 6" long

Style: Free Style



Apollo Virgin

Fine Mono in center, Poly /gauze in perimeter
 Medium Light to Medium, 120% density



Skin Virgin

All Poly Skin
 Medium Light to Medium, 120% density



Unique Virgin

All Super Fine Welded Mono
 Light, 80% density Bleached knots



Bella Virgin

French Lace in body, Polyskin in sides & back
 Medium Light, 100% density Bleached knots





Is there any design popular for more than 50 years?
Yes, that is just our Bond! Like UK James Bond.

Fine mono is always regarded as the strongest base
The poly with gauze scalloped front make hairline not noticeable
Durability is our first concern in this model.
And the density is in Medium 130%.
All these efforts make Bond to be popular for several decades

Bond



BASE SPECIFICATIONS:

Fine Mono center 4"x5"
1.5" Poly with gauze in front, scalloped front edge
Poly coating in sides and back, formed into 3 layers, designed to be cut down

SIZE:

8"x10", can be cut down to many options

HAIR SPECIFICATIONS:

Type: Human Hair, grey is synthetic, except 65%+, where human grey is used
Length: 6"
Wave Pattern: Light Wave, 30mm
Density: Medium density, 130%
Style: Free Style



COLOR SPECIFICATIONS:

#1	#2	#4	#550S
#1B	#210S	#410S	#565H
#1B10S	#220S	#420S	#6
#1B20S	#240S	#440S	#7
#1B40S	#3	#5	#17
#1B50S	#310S	#510S	#18
#1B65H	#320S	#520S	#20
#1B80H	#340S	#540S	#22R



There are 2 contradictory peaks in our hair industry: Natural and Durable
 It is not possible to achieve both in the same design
 What we can do is to find a balance in between
 Versalite just hits the right point to balance Natural and Durable

Perfect bleached French Lace front creates natural hairline
 Fine mono supplies enough durability for the whole unit
 Polyskin perimeter makes the edge thin and natural
 All these improvements based on Bond make Versalite be a shining nova!

Versalite



BASE SPECIFICATIONS:

French Lace front,
 Fine Mono center 4"x4"
 Polyskin in perimeter, formatted into 2 layers,
 designed to be cut down

SIZE:

8"x10", can be cut down to many options

HAIR SPECIFICATIONS:

Type: Human Hair, grey is synthetic, except 65%+, where human grey is used
 Length: 6"
 Wave Pattern: Light Wave, 30mm
 Density: Medium density, 130%
 Style: Free Style



COLOR SPECIFICATIONS:

#1	#2	#4	#550S
#1B	#210S	#410S	#565H
#1B10S	#220S	#420S	#6
#1B20S	#240S	#440S	#7
#1B40S	#3	#5	#17
#1B50S	#310S	#510S	#18
#1B65H	#320S	#520S	#20
#1B80H	#340S	#540S	#22R





Skin Units are always our top sellers.
 We sell so many Mirage and NG every day.
 On the other hand, not every one prefers the polyskin to be so thin.
 Normal thickness skin (14-16mil) are also quite welcomed these days.
 So, we are pleased to keep this Skin in stock from now.

The hair, the base, the workmanship, etc.
 Everything is made according to our usual high standards.
 With more consideration of durability, we make the polyskin into medium thickness.
 And the density is in Medium 130%.

Skin



BASE SPECIFICATIONS:

All Poly Skin in medium thickness,
 with scalloped front

SIZE:

8"x10", can be cut to any size

HAIR SPECIFICATIONS:

Type: Human Hair, grey is synthetic,
 except 65%+, where human grey is used

Length: 6"

Wave Pattern: Light Wave, 30mm

Density: Medium density, 130%

Style: Free Style



COLOR SPECIFICATIONS:

#1	#2	#4	#550S
#1B	#210S	#410S	#565H
#1B10S	#220S	#420S	#6
#1B20S	#240S	#440S	#7
#1B40S	#3	#5	#17
#1B50S	#310S	#510S	#18
#1B65H	#320S	#520S	#20
#1B80H	#340S	#540S	#22R



Nobody doubts European hair is the best hair in our hair industry
European hair is usually limited to achieve in market and quite pricy
Under cooperation with the world biggest European hair wholesaler
We make this dream come true!
Euro Injection skin comes into our regular inventory now

The hair is 100% European Virgin Remy Hair.
All the hairs are remy,in the same direction as on the girls' head
The hair is smooth,silky and shiny,no other hairs can compete
With our perfect selection,we even make it available in various colors
100% Virgin Remy in Natural colors,nothing has been done on the natural plaits!

Each individual hair is implanted by hand into a specially developed polymer base
This special polymer bonds with the hair and holds it in place
There are no knots nor loops.The hair looks,and is,like natural hair growing from the scalp

Euro Injection



BASE :

All Injection Poly Skin

SIZE:

7"x9", can be cut to any size

HAIR SPECIFICATIONS:

Type : European Hair

Length : 8"-10"

Wave Pattern : Silky Straight

Density : Medium Light to Medium,120%

Style : Center Crown

For accurate specifications and price
please refer to the stock list.





We used to make stock units in 8"x10".
 Does everyone need that big size? Off course not
 So,we make in various sizes
 In this way,we cut down the cost and wastage

Fine Mono



BASE SPECIFICATIONS:

1/8" Folded French Lace in front edge
 Fine Mono in body, Poly Coating in perimeter

HAIR SPECIFICATIONS:

Type : Human Hair, grey is synthetic,
 except 65%+, where human grey is used
 Length : 6"
 Wave Pattern : Natural Straight
 Density : Medium density, 130%
 Style : Free Style



COLORS:

Stock available in color #1B and #2 only

BASE SIZES:

4"x4"	5"X8"	7"x9"
4"x5"	6"X7"	7"x10"
4"x6"	6"x8"	8"x10"
5"x5"	6"x9"	8"x11"
5"x7"	7"X8"	9"x11"



The size varieties make the inventory huge.

We can only give the honor to our Top Sellers: Fine Mono and Q6.

The color choices are limited, but the price is much more competitive.

Q6



BASE SPECIFICATIONS:

French Lace in body,
Polyskin in sides&back

HAIR SPECIFICATIONS:

Type : Human Hair, grey is synthetic,
except 65%+, where human grey is used
Length : 6"
Wave Pattern : Light Wave, 30mm
Density : Medium Light to Medium, 120%
Style : Free Style



COLORS:

Stock available in color #1, #1C, #1B, #2 and #3

BASE SIZES:

4"x4"	5"x9"	7"x9"
4"x5"	6"x7"	7"x10"
5"x5"	6"x8"	8"x10"
5"x7"	6"x9"	8"x11"
5"x8"	7"x8"	9"x11"





Any design can be custom made.
Any specifications can be duplicated.
If you can design it ,we can make it!



Swiss Lace



Injection Lace



Super Injection skin



Swiss Lace



French Lace



Fine Mono



Thin skin with Lace front



Silicone Unit



Injection Lace



Super Injection skin



Super Injection skin



We carry various kinds of popular wigs in different workmanship and materials: Jewish wig, all hand tied wig, top mono wig; human hair, synthetic hair, high heat fiber; French lace, Swiss lace, Mono and so on.



Good quality JEWISH WIG can be made with supplied European hair or our own remy hair. We have Indian, Malaysian, Brazilian and Chinese remy cuticle hair in stock. They are in such superior hair quality, even can compete with the best European hair.



All hand tied, sides & back machine wefted and any designs can be made.





Hair Nature is also the leading manufacturer of lace wigs.
Any designs can be made in the very best quality.
Superior hair quality, Invisible lace, Fine knotting, Proper bleaching, No shedding, No tangling...
Complete satisfaction is what you will get here.



All Lace



Silk Top in French lace



All Stretch net



Lace with stretch in middle



Lace with stretch in sides&back



Welded Lace with French lace perimeter



Silky Straight



Yaki Straight



Body wave



Deep wave



Curly



Water Wavy



Jeri Curl



Kinky Straight



We keep a big stock for your choice.
2000 stock wigs ready for immediate shipment.
Cover all the popular color, length and texture.
There must be one wig to satisfy you.



Stock size:medium size and large size

Stock length:8" 10" 12" 14" 16" 18" 20" 22" 24"

Stock color:#1 #1B #2 #4 #27 #30 #613 #1B/30 #2/27 #4/27 #4/30 #4/33 #27/30 #27/613

Stock texture: Silky Straight,Yaki Straight, Body wave,Deep wave, Curly, Water Wavy,Jeri Curl, Kinky Straight





LACE FRONT WIG saves the natural hairline by fine knotting in front and top. And it leaves the sides&back to be machine wefted,which cuts down the cost. It is really a great revolution in our lace wig industry.



Synthetic hair Lace front wig
Available in both custom order and stock inventory



Human hair Lace front wig
Available in both custom order and stock inventory



LACE FRONTAL is made with a thin lace that extends from ear to ear across the front hairline. It is used to close in a sew-in weave across the front hairline. Our fine knotting and perfect bleached knots will create a natural hairline for you.



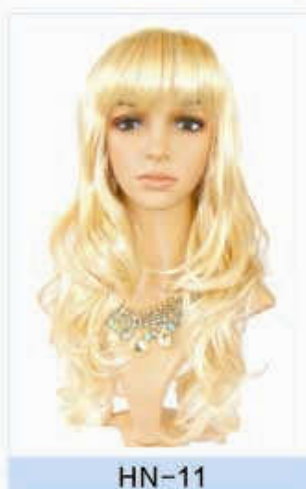
Available in both custom order and stock inventory





MACHINE MADE WIGS

All machine wefted in synthetic fiber, bulk order only.





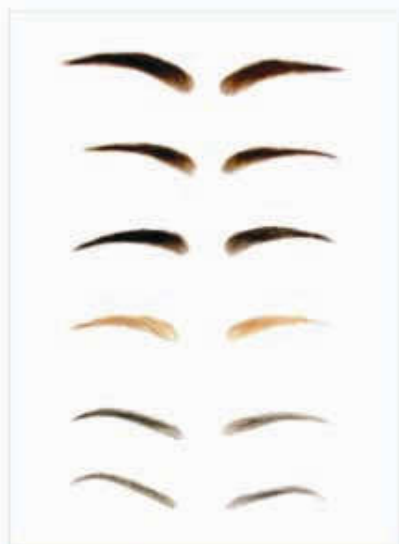
**Our Hair wefts are different from others'.
The hair quality is much better, no tangling nor matting
Texture will remain superior even after months' use!**



All clips can be supplied in black, dark brown, light brown, beige and silver from stock. Other colors may need to be custom made upon request.



Keratin Extensions



Eyebrows



Moustaches



Clip Extensions

Skin Wefts



Injection Eyebrow: 10# wide Color: 2



Injection Eyebrow: 10# wide Color: 5



Remy hair





All tapes and glues are ready for immediate shipment.
 Other models can also be supplied upon ordering.
 Extra cost and MOQ may be requested.



Stick it! Tape, A, 40PCS



Stick it! Tape, CC, 40PCS



Walker No Shine, A, 36PCS



Walker No Shine, CC, 36PCS



Ultra Hold Tape, A, 36PCS



Ultra Hold Tape, CC, 36PCS



Lace Front Support, A, 36PCS



Lace Front Support, CC, 36PCS



3M Clear Tape, A, 36PCS



Duo Tac tape, A, 36PCS



Super Tape, A, 36PCS



Super Tape, CC, 36PCS



Air Flex Mini Strips, 36PCS



Extenda Bond Plus Strips
100PCS/box, 1.5" x 12" per strip



Lace Front Support Extension tabs
4cmx0.8cm 120 tabs/bag



Walker No Shine Extension tabs
4cmx0.8cm 120 tabs/bag



Ultra Hold Glue
0.5oz/bottle



Ultra Hold Glue
1.4oz/bottle



Ultra Hold Glue
3.4oz/bottle



Oil Resistant White Glue
0.5oz/bottle



Ultra Hold Roll Tape
3/4"x3yards



Ultra Hold Roll Tape
1"x3yards



Ultra Hold Roll Tape
3/4"x12yards



Ultra Hold Roll Tape
1"x12yards



Walker No Shine Roll Tape
3/4"x3yards



Walker No Shine Roll Tape
1"x3yards



Walker No Shine Roll Tape
3/4"x12yards



Walker No Shine Roll Tape
1"x12yards



Super Roll Tape
3/4"x3yards



Super Roll Tape
1"x3yards



Super Roll Tape
3/4"x12yards



Super Roll Tape
1"x12yards



Lace Front Support Tape
(Blue Liner)3/4"x3yards



Lace Front Support Tape
(Blue Liner)1"x3yards



Lace Front Support Tape
(Blue Liner)3/4"x12yards



Lace Front Support Tape
(Blue Liner)1"x12yards



3M Clear Tape
3/4"x12yards



Super Stick Tape
3/4"x12yards



Pro-Flex II Tape
3/4"x12yards



German Brown Liner Cloth
3/4"x12yards



Stick It! Roll tape 1"x3yards



Sensi-Tak Roll tape 3/4"x12yards



Lace Front Support Tapes
(Blue Liner)3/4"x36 yards



Super Roll Tape
1"x36 yards



NORMAL _____
RUSH _____

TEMPLATE
SIZE:
X _____

BLEACH KNOT
Front _____
All Over _____

UNDERHAIR ?
1-FRONT ONLY
2-ALL AROUND
3-SIDES&BACK
NOT ON LACE
NUMBER OF ROWS: _____

BABYHAIR ?
NUMBER OF ROWS: _____

KNOT TYPE:
FACTORY RECOMMENDATION

SPECIAL REQUEST

CODE ON UNIT

BASE DESIGN:
[use as guide for materials]

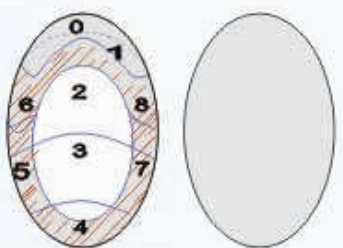
CHOOSE LACECOLOR:
#-LIGHT PINK
#-FLESH
#-CLEAR
#-BEIGE
#-BROWN
#-BLACK

DENSITY	0	1	2	3	4	5	6	7	8
50% EXT. LIGHT									
60% LIGHT									
100% LIGHT to MEDIUM									
130% MEDIUM									
150% MED. to HEAVY									
180% HEAVY									

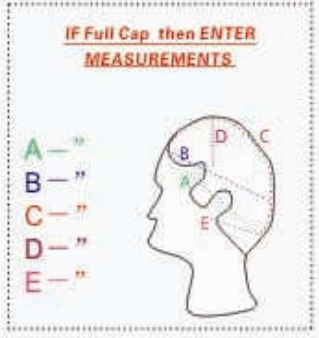
CURL/WAVE	0	1	2	3	4	5	6	7	8
Kinky Red MICRO 4mm									
Tight Curl Blue 10mm									
Kught Curl Grey 13mm									
Wavy White 18mm									
Hvy Wave Lvndr									
Lt Wave Purple 28mm									

FINAL LENGTH	0	F	T	C	B	LS	LT	RS	RT
Short 2 1/2"-3" (60-75mm)									
Medium 3 1/2"-4 1/2" (90-110mm)									
Long 5"-6" (125-150mm)									
XLong 7"-9" (175-225mm)									
EXT. LONG: _____ +\$\$									

COLOR	0	1	2	3	4	5	6	7	8
MAIN: #or SAMPLE									
% OF GREY (white)									
TOTAL % GREY									
EXTRA % GREY									
% OF HIGHLIGHTS									
TOTAL % HIGHLIGHTS									
EXTRA % HIGHLIGHTS									



CUSTOM ORDER



ORDERED BY: _____
ADDRESS: _____

DATE: _____
ORDER # _____
WEARER: _____
QTY: _____

CIRCLE HAIR STYLE OF YOUR CHOICE

Front Scallop Options

SCALLOP FRONT?
PICK NUMBER: _____

HAIR TYPE	0	1	2	3	4	5	6	7	8
MAIN HAIR									
GREY HAIR									
HIGHLIGHT HAIR									
SPECIAL INSTRUCTIONS:	INDIAN	CHINESE	REMY	YAK	ROUGH YAK	SYNTHETIC	SUPPLIED	OTHER	
	FULL UNIT? WITH OR WITHOUT TEMPLES								
ATTACHING: A - HAIR SAMPLE B - HAIR SAMPLE C - HAIR SAMPLE									



With 15 years' hard working, Hair Nature is satisfying professional importers from 50+ countries.

- **Production time**

(from date of receiving your order to date of delivery).

Normal order: 7-8 weeks

Rush order: 4-5 weeks

Inventory items can be shipped immediately upon receipt of payment.

- **Warranty**

Custom order can be returned for free repair/remake due to production error.

Inventory items can be returned for exchange/refund without any reason.

- **Payment method**

Bank Wire, Western Union, Money Gram, Paypal

- **Shipping**

UPS, Fedex, DHL, EMS, TNT, By air, By sea

- **Price**

Price list will be supplied upon request





青岛荣天工艺品有限公司

Qingdao Hair Nature Arts & Crafts Co.,Ltd

2016

Qingdao Hair Nature Arts&Crafts Co.,Ltd
A1404, Qingdao Center Mansion
NO.8, Hongkong Middle Road
Qingdao(266071), China
Tel: +86-532-66011788, 66011789
Fax: +86-532-66011799
Email: max@hairnature.com

<http://www.hairnature.com>