

*Life is not perfect  
but your hair extensions  
can be.....*

**COMPANY:** QINGDAO EVERBEAUTING HAIR CRAFTS CO., LTD.

**ADDRESS:** NO.34TH ZHUJIANG ROAD, HUANGDAO 266520, QINGDAO, CHINA

**EMAIL:** INFO@EVERBEAUTING.COM

**PHONE:** 86 532 85183101

**WEBSITE:** WWW.EVERBEAUTING.COM



*A Professional Hair Extensions Supplier*



### *Remy Raw Hair Bulks*

- 100 gram /bundle
- 50 colors available
- Natural color hair bundles available
- 14 inch to 28 inch available
- All cuticles same direction
- Good hair ratio, double drawn



# Tape Hair Series

## Injection Tape Hair Extensions

- Injection artwork and completely invisible
- 14 inch to 28 inch available
- Blue Tapes / White Tapes / Brown Tapes are provided
- 50 colors on the color chart
- Double drawn
- All cuticles same direction



## Seamless Double Tape Hair Extensions

- Thin pu size can be 3mm only
- More invisible
- 50 colors on the color chart
- Double drawn
- All cuticles same direction



## Normal Tape Hair Extensions

- Tape size can be 4\*0.6cm, 4\*0.8cm, 4\*1cm
- 14 inch to 28 inch available
- Blue Tapes / White Tapes / Brown Tapes are provided
- 50 colors on the color chart
- Double drawn
- All cuticles same direction



## Mini Tape Hair Extensions

- PU size can be 4\*0.8cm or 4\*1cm
- Easy to cut from the parting edge
- 14 inch to 28 inch available
- Blue Tapes / White Tapes / Brown Tapes are provided
- 50 colors on the color chart
- Double drawn
- All cuticles same direction



# Wefts Series

## Luxury Genius Hair Wefts

- The edge is thin, flat & light
- Most invisible effect
- No fold hair back
- 14 inch to 28 inch available
- Freely cut at any point of the weft, no shedding
- As flexi and soft as the handtied weft
- Holding lush volume hair
- Good hair ratio, double drawn



## Machine Sewn Remy Hair Wefts

- Most popular and useful hair product
- Add the hair volume very fast
- 14 inch to 28 inch available
- No need tape, glue or heat
- Use micro rings, sewing or attaching clips
- Good hair ratio, double drawn



## Seamless PU Hair Wefts

- Ultra-thin roots fit perfectly with the head scalp
- More hair are bonded to a 0.3cm thin PU strip
- 50g/ 60g/ 80g per pc
- 14 inch to 28 inch available
- No hair shedding
- Good hair ratio, double drawn
- 50 Colors on the color chart



## Handtied Remy Hair Wefts

- Purely handtied artwork
- Extremely thin weft
- Most seamless result
- 14 inch to 28 inch available
- Less pressure on natural hair roots



## Flexi Flat Hair Wefts

- 100g/120g/150g per pack
- Seamless, comfort and long-lasting durability
- The edge as thin as hand-tied weft
- Freely cut at any point but no shedding
- 14 inch to 28 inch available
- Add lush volume hair very fast



# Pre-bonded Hair Series

## Keratin Flat Tip Hair Extensions

- Italian beads to bond the hair
- 0.5g/0.7g/0.9g/1g per strand
- As flat and smooth as tape-ins
- 14 inch to 28 inch available
- Smaller bonds but better bending
- 360° movement with each strand
- Good hair ratio, double drawn



## Keratin V Tip Hair Extensions

- Italian glue pre-bonded hair
- 0.5g/0.7g/0.9g/1g per strand
- Smaller bonds but better bending
- Good hair ratio, double drawn
- Easy to remove and re-install



## Keratin U Tip Hair Extensions

- Italian glue, strong bonds
- 0.5g/0.7g/0.9g/1g per strand
- Smaller bonds but better bending
- 14 inch to 28 inch available
- Superior color and hair quality
- Good hair ratio, double drawn



# Pre-bonded Hair Series

## Keratin I Tip Hair Extension

- Applied by heat glue or micro rings
- 0.5g/ 0.7g/ 0.9g / 1g per strand
- Italian glue, no shedding
- 14 inch to 28 inch available
- A perfect solution for natural movement
- Good hair ratio, double drawn
- 50 colors on the color chart



## Keratin Y Tip Hair Extensions

- Use micro rings to install the strands
- 0.7g/ 0.9g / 1g /strand
- 360° movement with each individual strand
- Flat and comfortable feeling on users' head
- No glue, no heat. No hurt to natural hair
- Fast to install and remove
- Good hair ratio, double drawn



## Nano Ring Hair Extensions

- Use tiny nano rings to install
- Soft bonds, more comfortable
- 14inch to 28 inch available
- Reusable hair extensions, much cheaper
- Good hair ratio, double drawn



## Nano Tip Hair Extensions

- Use nano rings to install, more invisible
- Soft bonds, more comfortable
- 14 inch to 28 inch available
- Good hair ratio, double drawn
- Hair extensions can be re-usable



# Clip In Hair Series

## Lace Clip In Hair Extensions

- The most popular clip ins
- 3 pcs/set, 5 pcs/set, 8 pcs/set, 11 pcs/set
- 100g / 130g/150g/180g per set
- Easily to install and take off at home
- Soft and comfortable
- Silk Straight / body wave texture
- Good hair ratio, double drawn



## PU Seamless Clip In Hair Extensions

- 3 pcs/set, 5 pcs/set, 8 pcs/set, 11 pcs/set
- 100g / 130g/ 150g/ 180g per set
- 14 inch to 28 inch available
- Thin and smooth PU
- Safe to touch and easy to style
- Good hair ratio, double drawn



## Clip In Hair Extensions

- 100g/120g/150g per set
- 3 pcs/set, 5 pcs/set, 7 pcs/set, 9 pcs/set
- 14 inch to 28 inch available
- Good hair ratio, double drawn
- Silk Straight / Body Wave



## Highlight Magic Clip In Hair Extensions

- Single clip or two clips
- 2.5g/pc or 5 g/pc
- Highlight fantasy colors, starlit shining
- Easy to install and take off
- Hair Extensions can be reusable



# Ponytails Series

## Remy Human Hair Ponytails

- 90g /100g /120g per pack
- 14 inch to 28 inch available
- 50 colors on the color chart
- Instant to create the required ponytail style
- Easy to apply with the build-in comb
- Straight/Body Wave/Deep Wave textures are provided
- Good hair ratio, double drawn



# Halo Hair Series

## Halo / Flip-In Hair Extensions

- 100g/120g/150g per pack
- 14 inch to 28 inch
- Instant length, volume and thickness adding
- Super easy and soft to install
- Perfect for daily wearing and natural looking
- Good hair ratio, double drawn
- 50 colors on our color chart





# *Toppers Series*

## *Mono Base Topper*

- *Size: 4"\*5", 5"\*6.5", 6"\*6"*
- *Base: mono + PU Perimeter*
- *Length: 14 inch, 16 inch, 18 inch, 20 inch*
- *Weight: 80g-100g*
- *Technology: hand-tied craft*
- *Hair: 100% natural remy human hair*
- *50 colors on the color chart*
- *Customized order acceptable and MOQ 5 pcs*



## *Mesh / Fishnet Base Topper*

- *Size: 5"\*5", 6"\*6.5"*
- *Mesh Size: 5mm\*5mm, 8mm\*8mm, 10mm\*10mm*
- *Base: Fishnet*
- *Length: 14 inch, 16 inch, 18 inch, 20 inch*
- *Weight: 80-100 gram*
- *Style: Free style*
- *Technology: hand-tied craft*
- *Hair: 100% natural remy human hair*
- *50 colors on the color chart*
- *Customized order acceptable and MOQ 5 pcs*



# Toppers Series

## Jewish Silk Top Base Topper

- Size : 7"\*9"
- Base: Silk + Lace
- Length: 14 inch, 16 inch, 18 inch, 20 inch
- Weight: 80-120 gram
- Style: Free style
- Technology: French Knot + Weft
- Hair: 100% natural remy human hair
- 50 colors on the color chart
- Customized order acceptable and MOQ 5 pcs



## Lace Base Topper

- Size : 6"\*8" , 7"\*9" , 8"\*10"
- Base: Lace +PU perimeter
- Length: 14 inch, 16 inch, 18 inch, 20 inch
- Weight: 80-100 gram
- Style: Free style
- Technology: hand-tied craft
- Hair: 100% natural remy human hair
- 50 colors on the color chart
- Customized order acceptable and MOQ 5 pcs



## New Injection Topper

- Size : 6"\*6.5" , 7"\*8"
- Base: Poly+lace
- Length: 14 inch, 16 inch, 18 inch, 20 inch
- Weight: 80g-120g
- Technology: Injection + weft
- Hair: 100% natural remy human hair
- 50 colors on the color chart
- Customized order acceptable and MOQ 5 pcs



## Poly / Skin Base Topper

- Size : 6"\*8" , 7"\*9" , 8"\*10"
- Base: Super Thin PU
- Length: 14 inch, 16 inch, 18 inch, 20 inch
- Weight: 100g-120g
- Technology: Injection
- Hair: 100% natural remy human hair
- 50 colors on the color chart
- Customized order acceptable and MOQ 5 pcs



# Tool & Accessories Series



**Blue Tape**



**White Tape**



**Brown Tape**

Tape Roll Size:

1"\* 36 Yard 3/4"\* 36 yard 1cm\*36 yard 0.8cm\*36yard 0.8cm\*12yard 0.8cm\*3yard



**Replacement Tape Sheets**

Size:

4cm\*0.6cm\*20 strips 4cm\*1cm\*20 strips  
4cm\*0.8cm\*20 strips



**Tape Hair Plier**



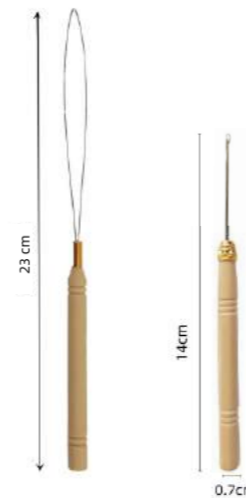
**Tape Remover**



**Nano Rings**



**Micro Rings**



**Wooden Hook**



**Mental Crochet**



**Plier**



**Stainless Plier Set**

# Tools & Accessories Series



*Brown Color  
Italian Keratin Beads*



*Black Color  
Italian Keratin Beads*



*Clear Color  
Italian Keratin Beads*



*Glue Pot*



*Connector*



*A-Tip*



*B-Tip*



*C-Tip*



*I J C Needle*



*Hair Comb*



*Scissors*



*Thread*



*Clips*

# Color Chart

## Fantasy Colors



## Natural Colors



# Color Chart



# Color Chart

## Ombre Colors



## Piano Colors



# Company Profile

*Our company is located in the beautiful coastal city of Qingdao and has been established for over 10 years. With a team of over 100 dedicated employees, we specialize in producing various types of hair extension products.*

*At our company, we prioritize the use of superior quality materials and employ state-of-the-art manufacturing techniques to produce our products. Our team of experienced professionals is dedicated to ensuring that every product meets our rigorous standards for excellence. Our commitment to providing high-quality products and exceptional customer service has earned us the trust of our loyal customers.*

*We offer a wide range of hair extension products, including clip-ins, tape in hair, pre-bonded hair, ponytails, sew-ins, toppers etc. Our products are available in a variety of textures and colors to suit the needs of our diverse clientele.*

*In addition to our commitment to producing exceptional hair extensions, we also place great emphasis on customer satisfaction. Our friendly and knowledgeable staff is always available to answer any questions and provide personalized recommendations to ensure that each customer finds the perfect product for their needs.*

*Our company is dedicated to providing high-quality hair extension products and exceptional customer service. We take pride in our work and are committed to be a trusted and reliable hair extensions manufacturer.*

*Welcome to visit us.*