

Hollyren Catalogue for partial products

For more details, please be free to contact us soon.

**HOLLYREN
FACTORY**

+86 532 - 85979512

info@hollyren.com

CONTACT US

www.hollyren.com



FACTORY AUDIT AND ALL CERTIFICATIONS



intertek
Total Quality. Assured.



MSDS



SGS



+86 532 - 85979512

info@hollyren.com

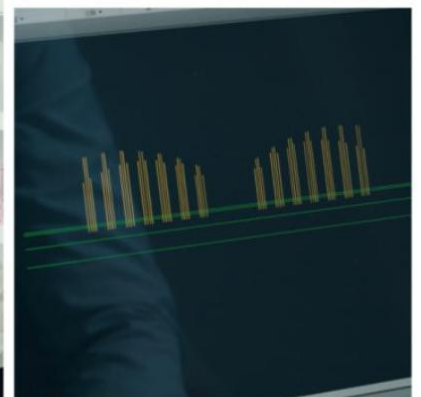
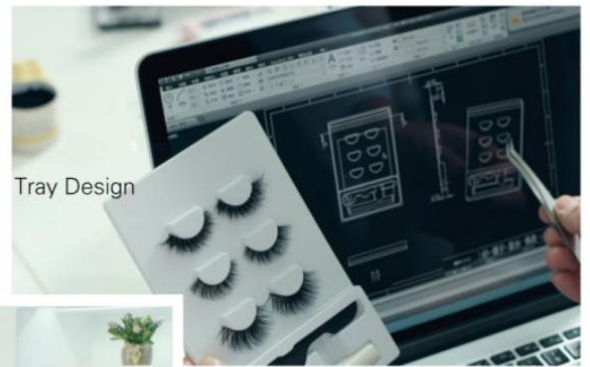
www.hollyren.com

HOLLYREN ATTENDS INTERNATIONAL BEAUTY FAIRS EVERY YEAR

 www.hollyren.com



HOLLYREN R&D DEPARTMENT CREAT NEW EYELASHES



Double 3D layered effect faux mink

EYELASHES

FV 03



FV 11



FV 105



FV 119



Natural 3D faux

EYELASHES

DV 09



DV 13



DVH 01



DVH 05



Mink effect 3D faux mink

EYELASHES

OWA 04-1



OWA 06-1



CFA 03



CFA 05



25mm Super long 3D real

EYELASHES

SL 02



SL 27



SL 34



POPULAR NEW STYLE BOX
CLICK HERE TO GET YOUR PRIVATE
DESIGN



Hot selling box



Tools for strip false eyelashes



Eyelash tester

Metal eyelash applicator



Eyelash curler

Packages options



- ① 1g PE Round Tube ② 1g Aluminum Tube ③ 1g PE Flat Tube
- ④ 3g PE Round Bottle ⑤ 5g PE Round Bottle ⑥ 5g PE Square Bottle
- ⑦ 6g Glass Bottle (special for individual use) ⑧ 7g Laminated Tube
- ⑨ 10g Double Layer Tube

Eyelash extension

perfect salon partner



Classic



Volume



Easy-fan



Ellipse Flat

Product advantage



STABLE CURL

The curl keeps stable for more than 1 year and thickness standard.



EASILY PICKED

The paper strip layer is easily peeled from basis.



EASILY REMOVABLE

The lash is easily removable from the transfer strip.



NO RESIDUE

The lash has no residue from the transfer strip.



NON-STICKY

The lash do not stick together after removing from the transfer strip.



GREAT MATERIAL

High quality raw material.

Product advantage



HE01



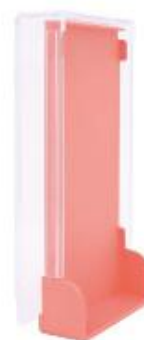
HE08



HE03



HE13



HE18

CUSTOMIZED

Professional glue

FOR EYELASH EXTENSIONS



GR



GF+



GS



GT+



GS+

MSDS certificates are available for all kinds of glue

Tweezers

BEST PARTNER FOR LASH ARTISTS PRECISION
AND COMFORT



JH01

MATERIAL: stainless steel
SIZE: 14cm total length,
9cm handle length, 0.75cm width
WEIGHT: 13g



JH04

MATERIAL: stainless steel
SIZE: 11.5cm total length,
8.2cm handle length, 0.9cm width
WEIGHT: 15g
ANGLE: 45°



JH14

MATERIAL: stainless steel
SIZE: 11.2cm total length,
8cm handle length, 0.9cm width
WEIGHT: 15.9g
ANGLE: 50°



LT05

MATERIAL: stainless steel
SIZE: 12.2cm total length,
8.7cm handle length, 0.9cm width
WEIGHT: 17.5g
ANGLE: 50°